

**NATIONAL PRIMARY CARE INFECTIOUS DISEASES
SENTINEL SURVEILLANCE FORTNIGHTLY REPORT**

Combining data from The Australian Sentinel Practices Research Network (ASPREN)*
and the Victorian Sentinel Practitioners Influenza Network (VicSPIN)*

No. 19, 2018 - 10th September — 23rd September 2018

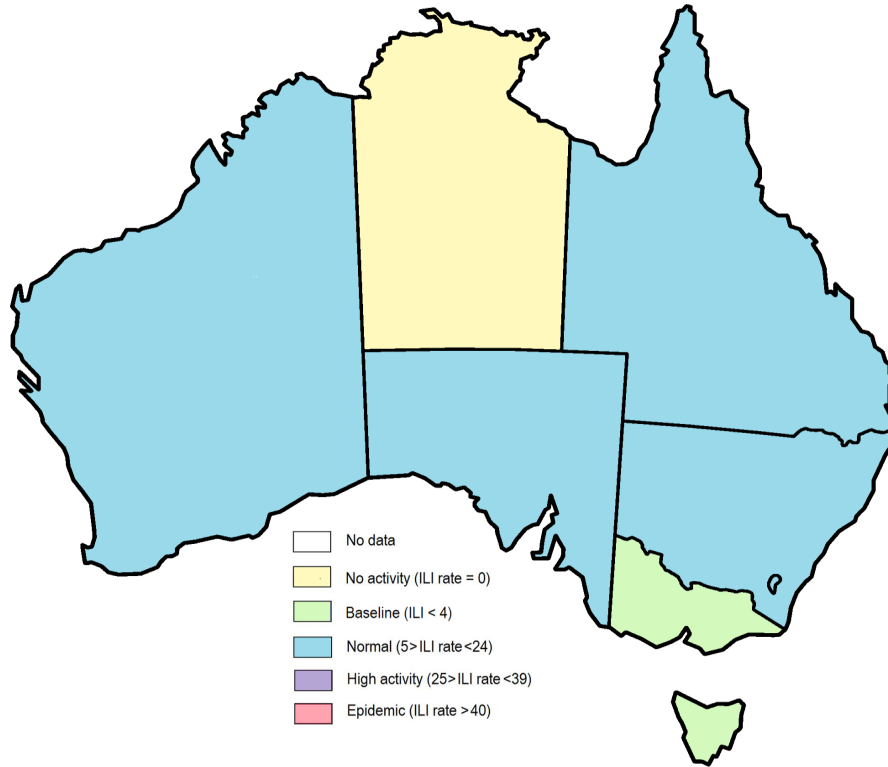


Figure 1. Map of ILI activity by jurisdiction, weeks 37 - 38, 2018.

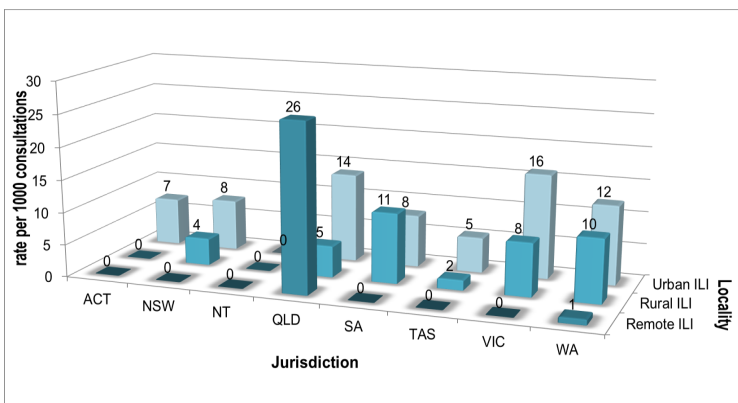


Figure 2. ASPREN + VicSPIN rate of ILI by locality and jurisdiction, weeks 37 - 38, 2018.

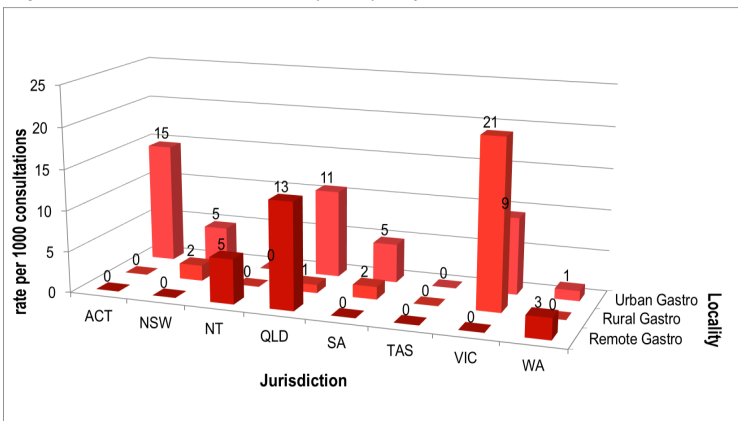


Figure 3. ASPREN rate of gastroenteritis by locality and jurisdiction, weeks 37 - 38, 2018.

NATIONAL SUMMARY



Influenza-like-illness levels are decreasing

34

Case of influenza have been detected in this reporting period
27 x Influenza A
7 x Influenza B

20%

Influenza positivity during the reporting period.

164

Cases of influenza have been detected this year:
130 x Influenza A
34 x Influenza B



Gastroenteritis levels remain steady at baseline levels

**SYNDROMIC SURVEILLANCE
REPORTING**

Reports were received from 312 reporters from 8 states and territories during the reporting period. During weeks 37 and 38 reporters saw a total of 41,423 patients.

INFLUENZA-LIKE-ILLNESS (ILI)

Nationally, ILI notifications remained steady the period with 251 notifications being reported in weeks 37—38. ILI rates reported in this period slightly decreased to 7 and 6 cases per 1000 consultations (weighted) in weeks 37 and 38 respectively. This was slightly lower than the previous fortnight where rates were 6 and 8 cases per 1000 consultations. For the same reporting period in 2017, ILI rates were higher at 18 and 19 cases per 1000 consultations for weeks 37 and 38 respectively (see Fig. 5).

GASTROENTERITIS

Nationally, gastroenteritis notifications increased over the period with 99 notifications reported. Gastroenteritis rates reported in this period remained steady at 3 and 4 cases per 1000 consultations in both weeks 37 and 38 respectively, compared to 3 cases per 1000 consultations in weeks 35 and 36 (see Fig. 5).

* ASPREN is funded by the Commonwealth's Department of Health, Office of Health Protection, Vaccine Preventable Disease Surveillance Section.

* VicSPIN is funded by Melbourne Health and the Victorian Infectious Diseases Reference Laboratory.

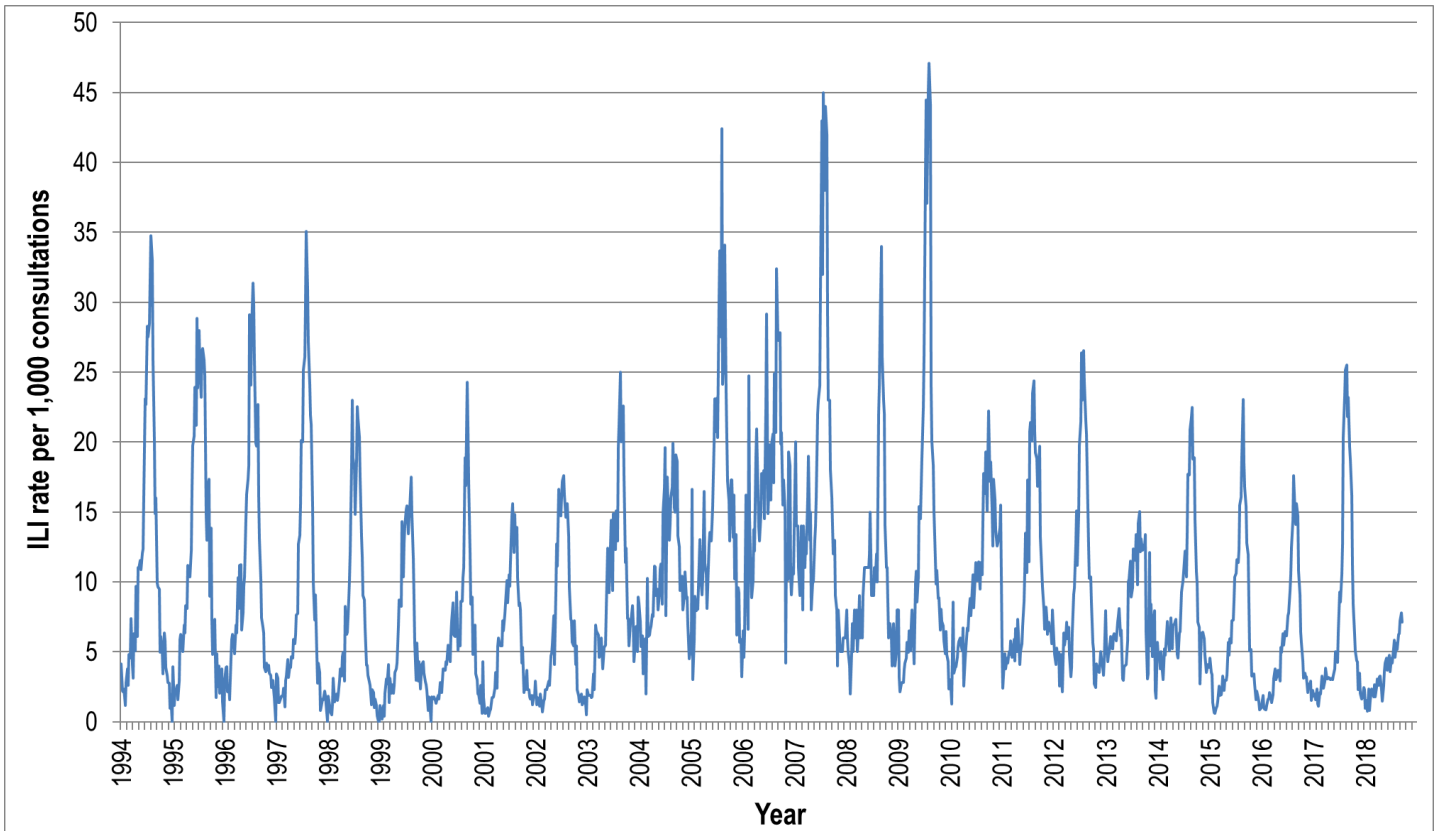


Figure 4. ASPREN ILI rates 1994 - 2017.

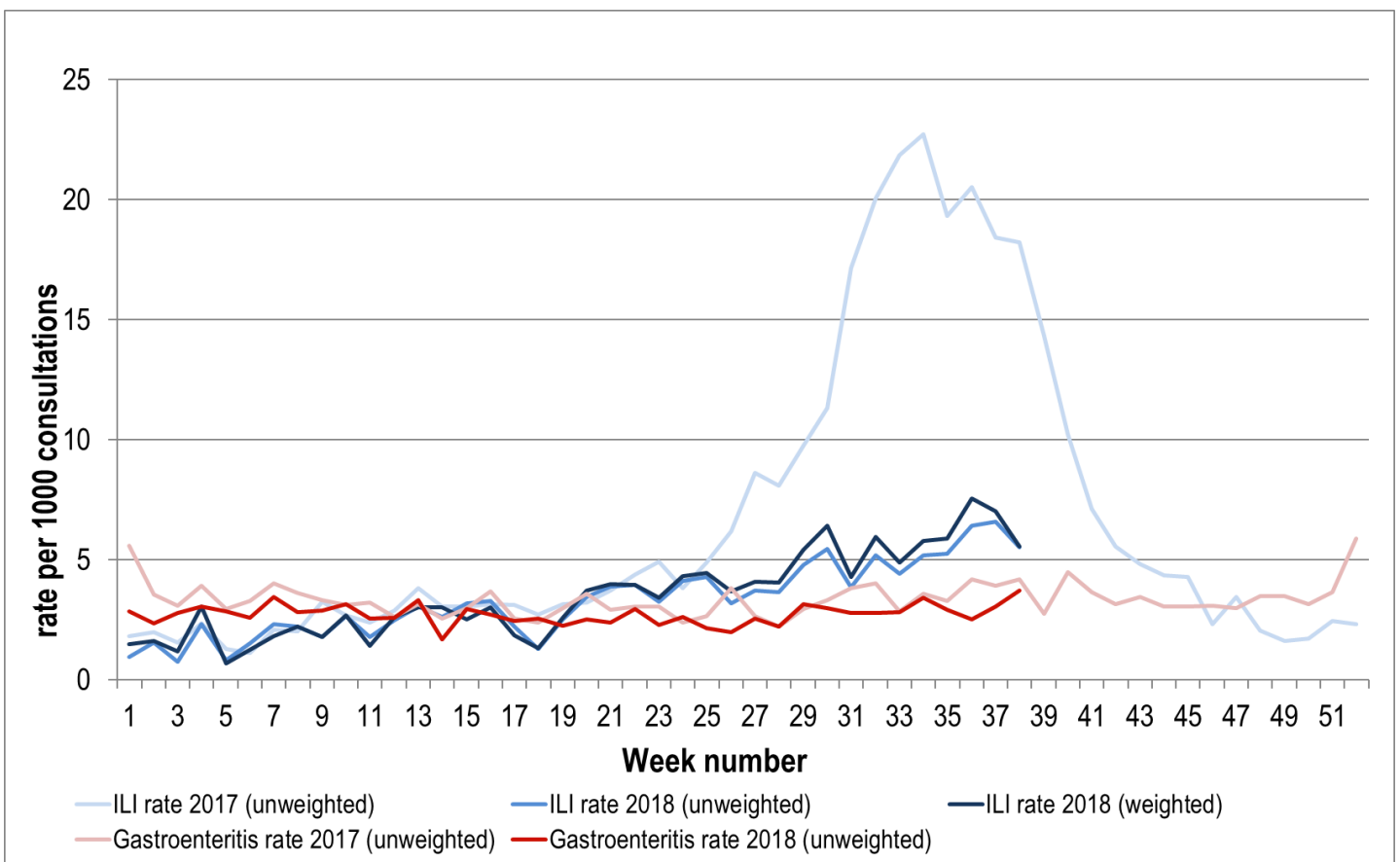


Figure 5. ASPREN + VicSPIN ILI and ASPREN gastroenteritis rates 2017-18. Weighted rates are weighted to account for population size differences between jurisdictions, using population estimates from the 2011 Australian Census.

VIROLOGICAL SURVEILLANCE

69% of all ILI patients were swab tested during weeks 37 - 38 (see Figure 6). 34 cases of Influenza were detected during this period. There were also 20 cases of Metapneumovirus detected making it the second most common respiratory virus circulating the nation at present (see figure 8).

Viral laboratory data are provided by SA Pathology, PathWest and VicSPIN laboratories.

| | Reporting Period 10 Sept - 23 Sept 2018 | YTD 1 Jan - 23 Sept 2018 |
|--|--|-----------------------------|
| Total number of ILI notifications | 251 | 2758 |
| Number of swab tests performed | 173 | 1792 |
| % ILI patients tested | 69% | 65% |
| % of swab tests positive for influenza | 20% | 9% |

Figure 6. ASPREN + VicSPIN virological surveillance results overview for 2018 #

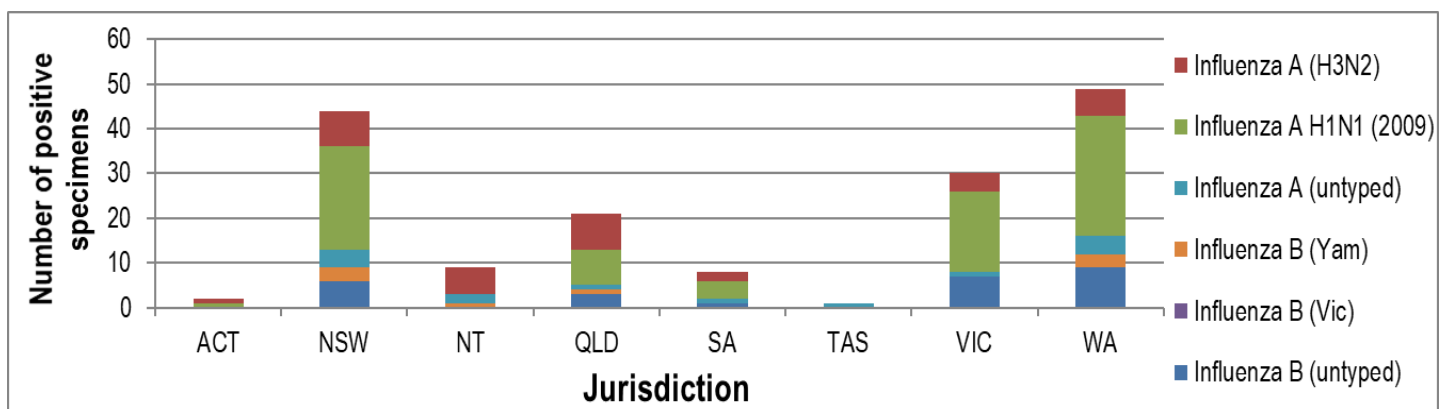


Figure 7. ASPREN + VicSPIN influenza subtype analysis by jurisdiction for 2018 #

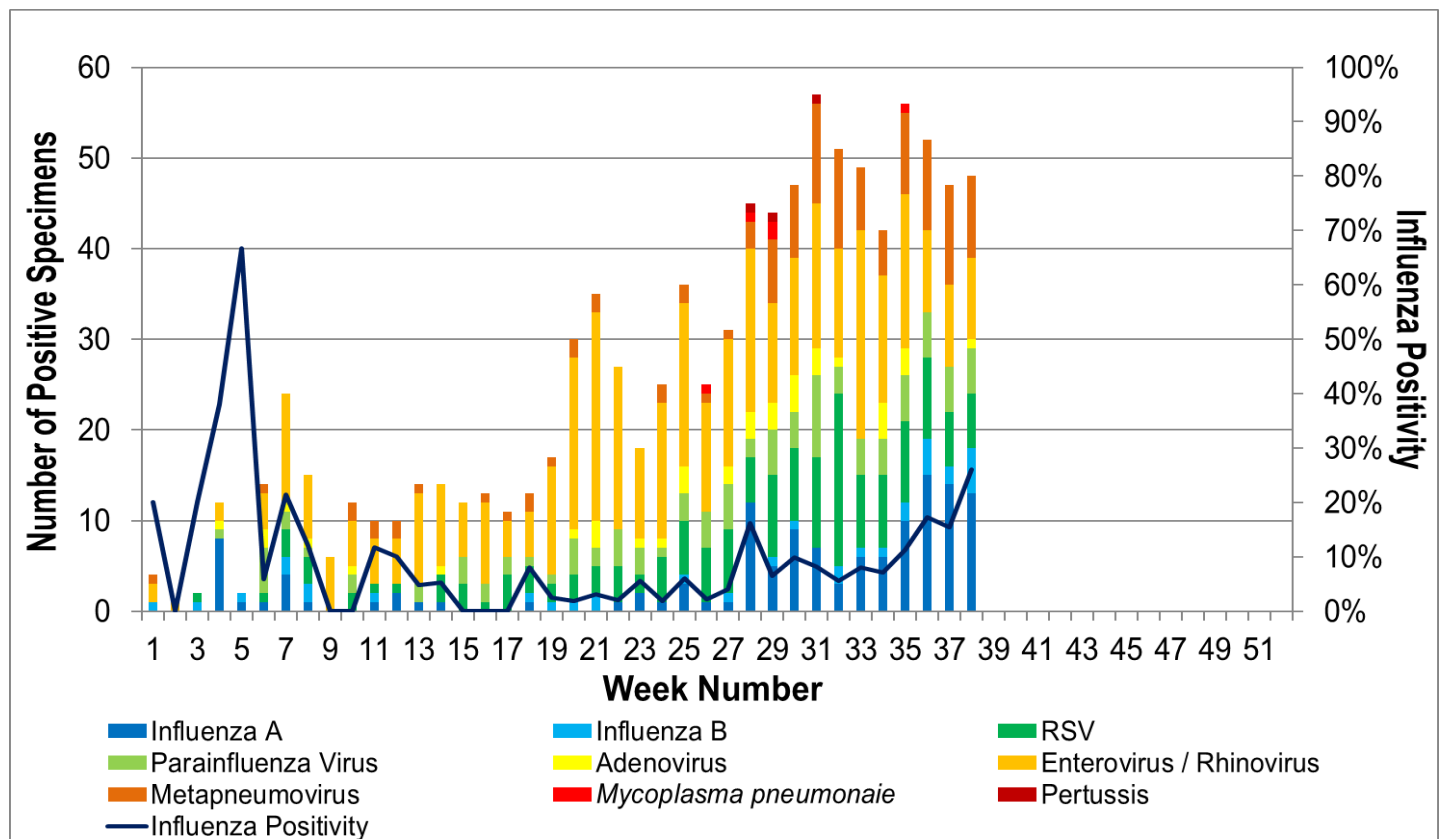


Figure 8. ASPREN, VicSPIN laboratory detection of influenza and other respiratory viruses for 2018 #

The Australian Sentinel Practices Research Network is supported by the Australian Government Department of Health (the Department). The opinions expressed in this paper are those of the authors, and do not necessarily represent the views of the Department.