

**NATIONAL PRIMARY CARE INFECTIOUS DISEASES  
SENTINEL SURVEILLANCE FORTNIGHTLY REPORT**

Combining data from The Australian Sentinel Practices Research Network (ASPREN)\*  
and the Victorian Sentinel Practitioners Influenza Network (VicSPIN)\*

No. 10, 2018 - 7th May — 20th May 2018

**NATIONAL SUMMARY**

**█** Influenza-like-illness levels remain steady at baseline levels

**2** Case of influenza have been detected in this reporting period  
0 x Influenza A  
2 x Influenza B

**2%** Influenza positivity during the reporting period.

**32** Cases of influenza have been detected this year:  
21 x Influenza A  
11 x Influenza B

**█** Gastroenteritis levels remain steady at baseline levels

**SYNDROMIC SURVEILLANCE  
REPORTING**

Reports were received from 333 reporters from 8 states and territories during the reporting period. During weeks 19 and 20 reporters saw a total of 53,910 patients.

**INFLUENZA-LIKE-ILLNESS (ILI)**

Nationally, ILI notifications increased over the period with 160 notifications being reported in weeks 19–20. ILI rates reported in this period increased to 3 and 4 cases per 1000 consultations (weighted) in weeks 19 and 20 respectively. This was higher than the previous fortnight where rates were 2 and 1 cases per 1000 consultations. For the same reporting period in 2017, ILI rates were similar at 3 cases per 1000 consultations for weeks 19 and 20 (see Fig. 5).

**GASTROENTERITIS**

Nationally, gastroenteritis notifications remained steady over the period with 94 notifications reported. Gastroenteritis rates reported in this period remained steady at 2 and 3 cases per 1000 consultations in both weeks 19 and 20 respectively, compared to 2 and 3 cases per 1000 consultations in weeks 17 and 18 respectively (see Fig. 5).

\* ASPREN is funded by the Commonwealth's Department of Health, Office of Health Protection, Vaccine Preventable Disease Surveillance Section.

\* VicSPIN is funded by Melbourne Health and the Victorian Infectious Diseases Reference Laboratory.

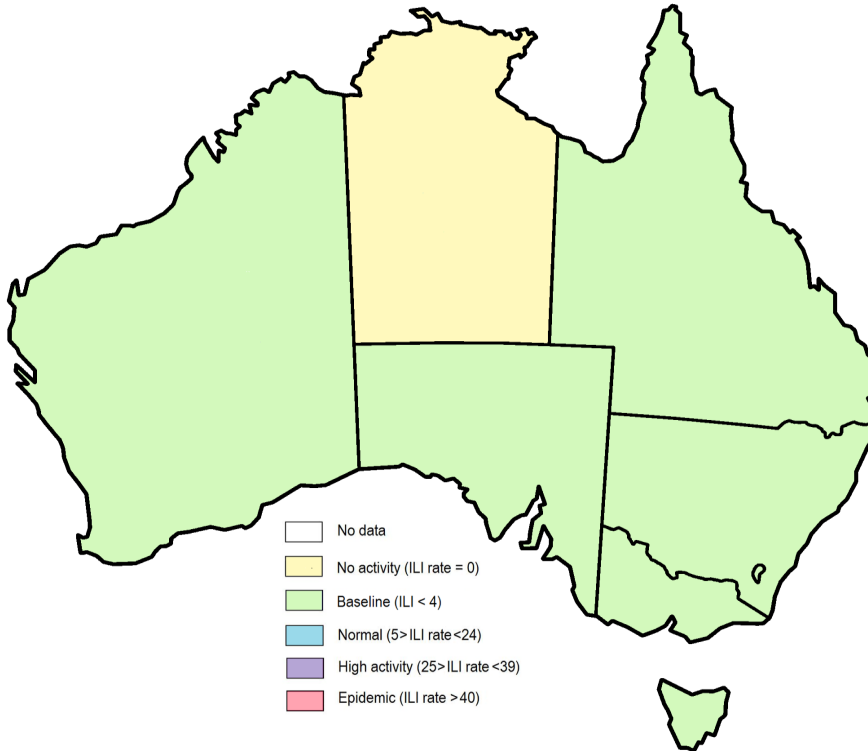


Figure 1. Map of ILI activity by jurisdiction, weeks 19 - 20, 2018.

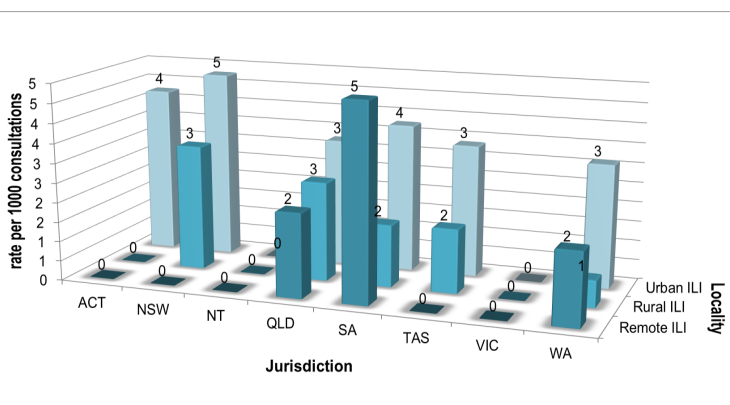


Figure 2. ASPREN + VicSPIN rate of ILI by locality and jurisdiction, weeks 19 - 20, 2018.

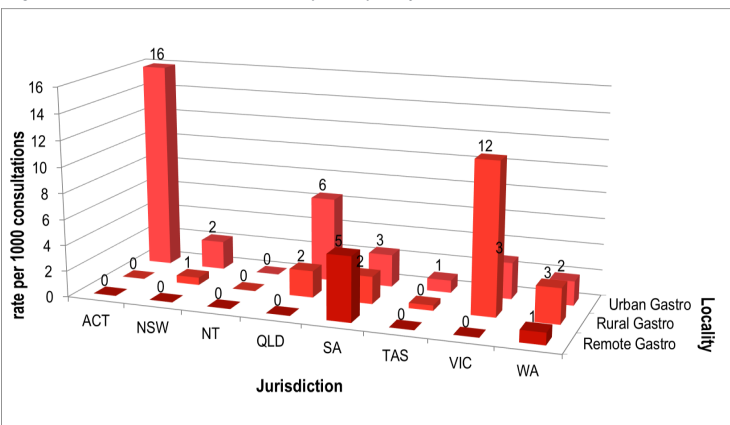


Figure 3. ASPREN rate of gastroenteritis by locality and jurisdiction, weeks 19 - 20, 2018.

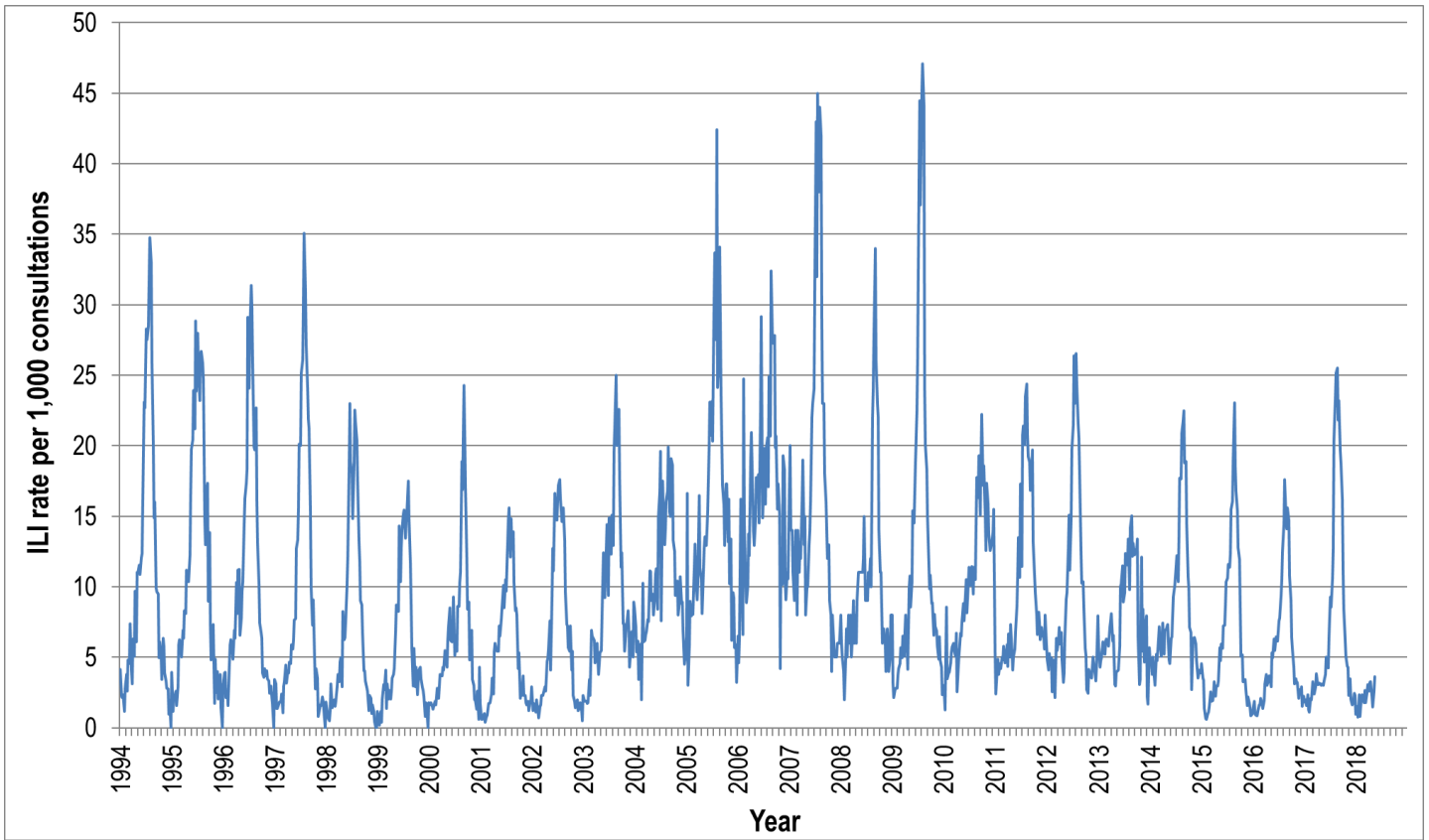


Figure 4. ASPREN ILI rates 1994 - 2017.

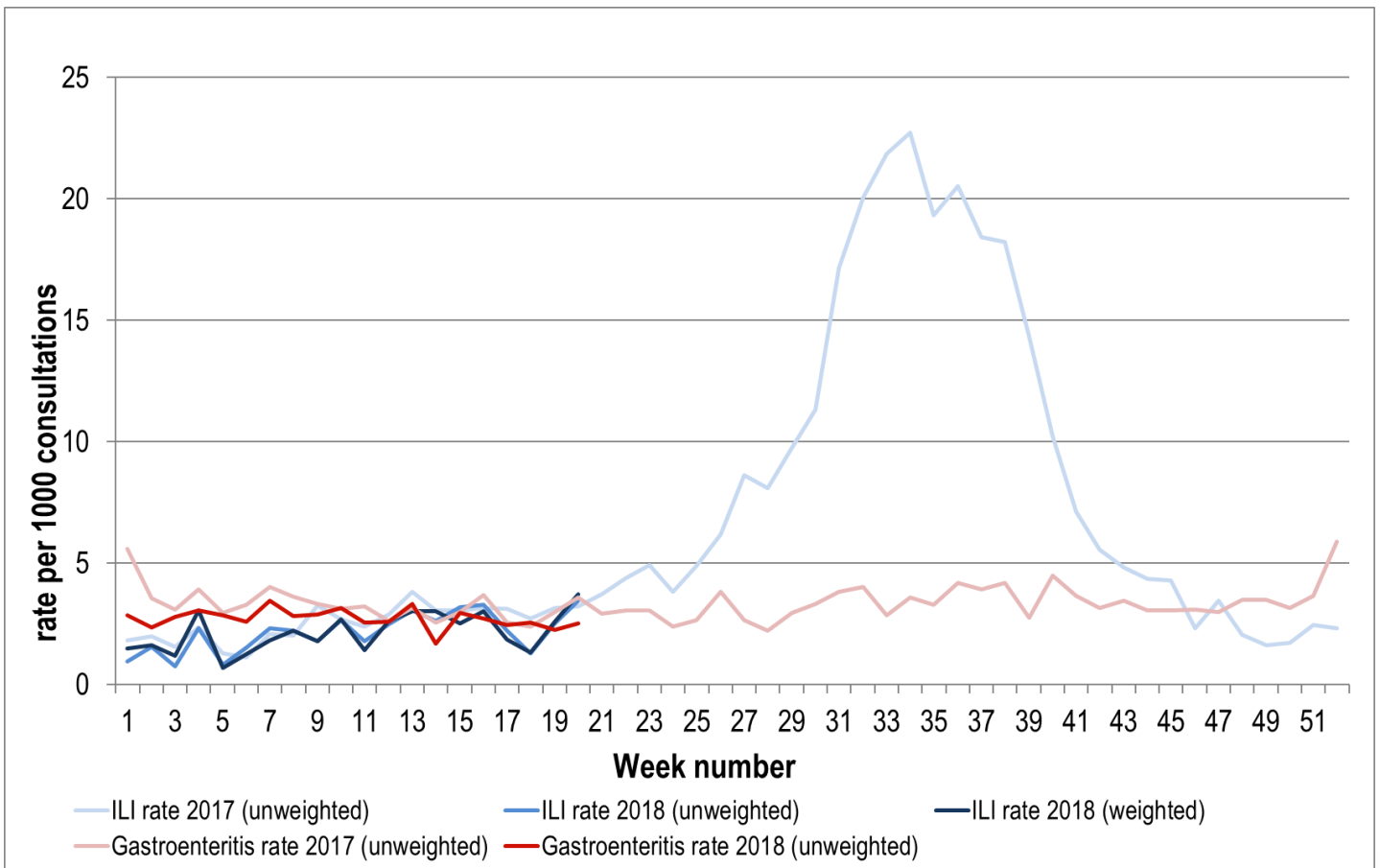


Figure 5. ASPREN + VicSPIN ILI and ASPREN gastroenteritis rates 2017-18.

### VIROLOGICAL SURVEILLANCE

57% of all ILI patients were swab tested during weeks 19 - 20 (see Figure 6). 2 cases of Influenza were detected during this period. There were also 31 cases of Rhinovirus detected making it the most common respiratory virus circulating the nation at present (see figure 8).

# Viral laboratory data are provided by SA Pathology, PathWest and VicSPIN laboratories.

	Reporting Period 7 May - 20 May 2018	YTD 1 Jan - 20 May 2018
Total number of ILI notifications	160	869
Number of swab tests performed	91	410
% ILI patients tested	57%	47%
% of swab tests positive for influenza	2%	8%

Figure 6. ASPREN + VicSPIN virological surveillance results overview for 2018 #

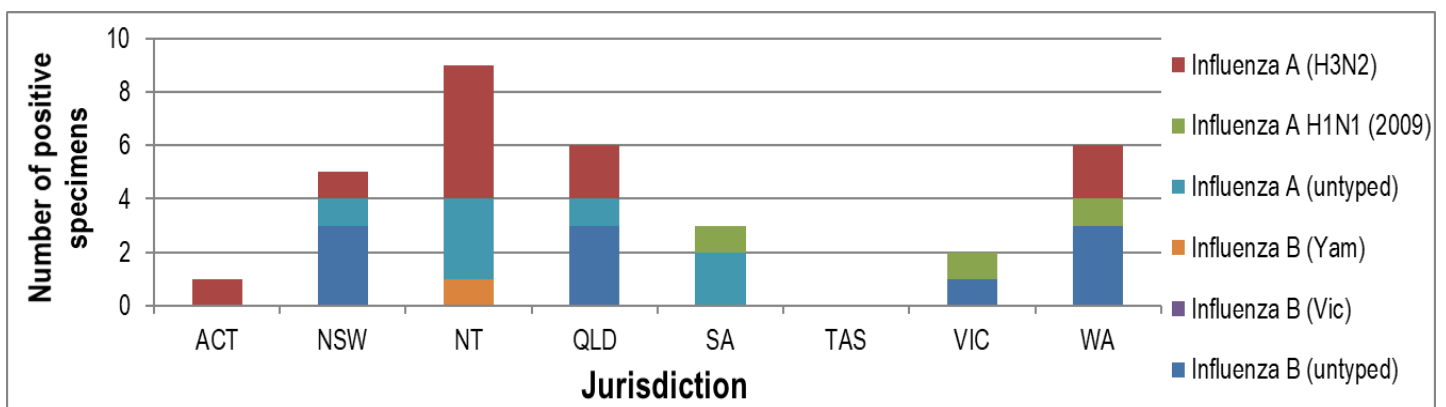


Figure 7. ASPREN + VicSPIN influenza subtype analysis by jurisdiction for 2018 #

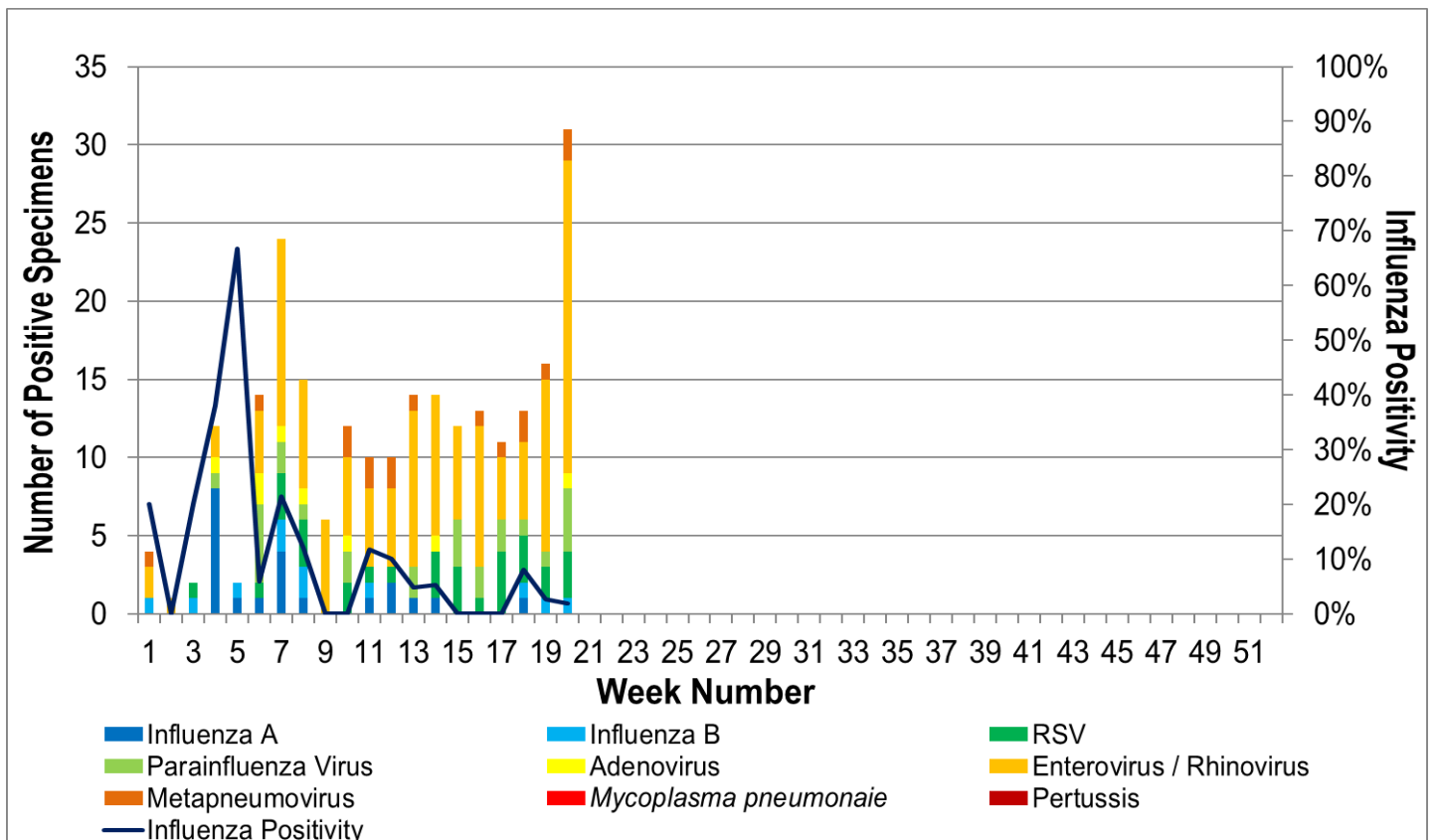


Figure 8. ASPREN, VicSPIN laboratory detection of influenza and other respiratory viruses for 2018 #

The Australian Sentinel Practices Research Network is supported by the Australian Government Department of Health (the Department). The opinions expressed in this paper are those of the authors, and do not necessarily represent the views of the Department

Please note: This report is based on data available as at 14 June 2018. Delays in the reporting of data may cause data to change retrospectively.