

**NATIONAL PRIMARY CARE INFECTIOUS DISEASES
SENTINEL SURVEILLANCE FORTNIGHTLY REPORT**

Combining data from The Australian Sentinel Practices Research Network (ASPREN)*
and the Victorian Sentinel Practitioners Influenza Network (VicSPIN)*

No. 9, 2018 - 23rd April — 6th May 2018

NATIONAL SUMMARY

1 Influenza-like-illness levels remain steady below baseline levels

2 Case of influenza have been detected in this reporting period
1 x Influenza A
1 x Influenza B

4% Influenza positivity during the reporting period.

30 Cases of influenza have been detected this year:
21 x Influenza A
9 x Influenza B

1 Gastroenteritis levels remain steady at baseline levels

**SYNDROMIC SURVEILLANCE
REPORTING**

Reports were received from 336 reporters from 8 states and territories during the reporting period. During weeks 17 and 18 reporters saw a total of 46,961 patients.

INFLUENZA-LIKE-ILLNESS (ILI)

Nationally, ILI notifications decreased over the period with 77 notifications being reported in weeks 17–18. ILI rates reported in this period decreased at 2 and 1 cases per 1000 consultations (weighted) in weeks 17 and 18 respectively. This was less than the previous fortnight where rates were 3 cases per 1000 consultations. For the same reporting period in 2017, ILI rates were higher at 3 cases per 1000 consultations for weeks 17 and 18 (see Fig. 5).

GASTROENTERITIS

Nationally, gastroenteritis notifications decreased over the period with 99 notifications reported. Gastroenteritis rates reported in this period remained steady at 2 and 3 cases per 1000 consultations in both weeks 17 and 18 respectively, compared to 3 cases per 1000 consultations in weeks 15 and 16 (see Fig. 5).

* ASPREN is funded by the Commonwealth's Department of Health, Office of Health Protection, Vaccine Preventable Disease Surveillance Section.

* VicSPIN is funded by Melbourne Health and the Victorian Infectious Diseases Reference Laboratory.

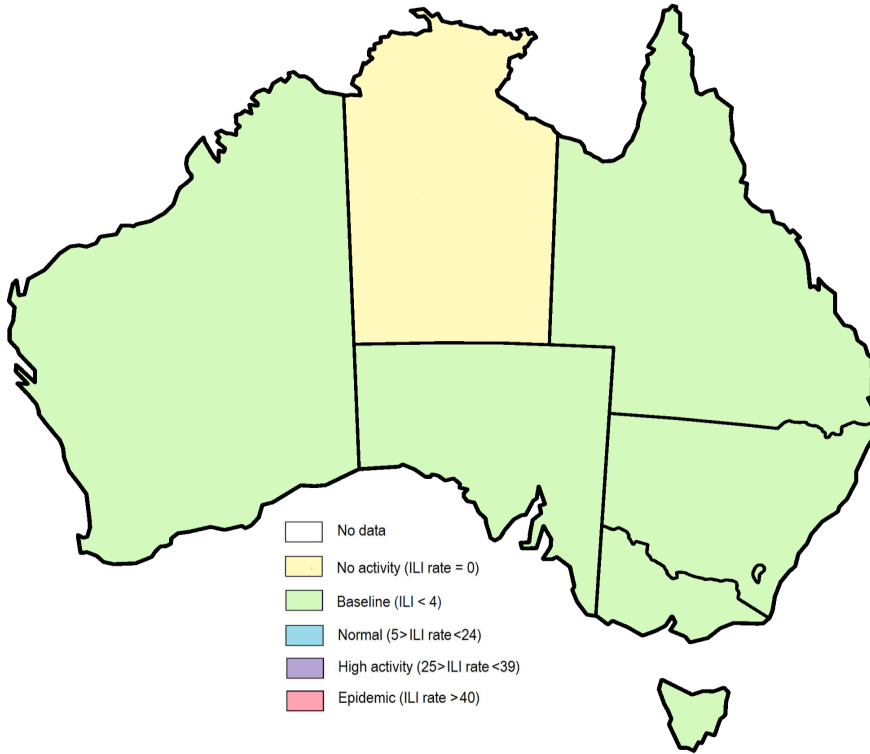


Figure 1. Map of ILI activity by jurisdiction, weeks 17 - 18, 2018.

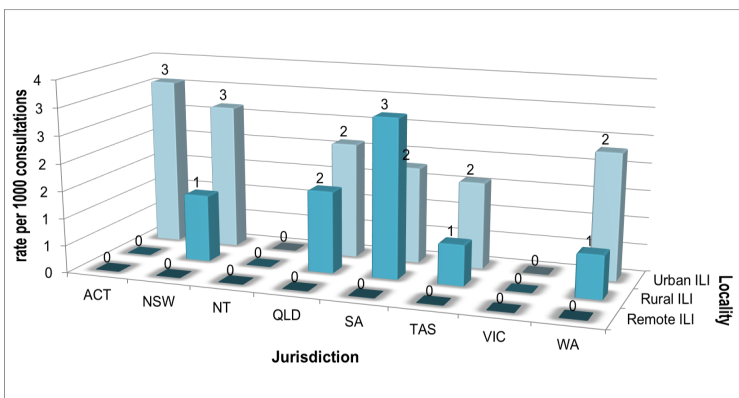


Figure 2. ASPREN + VicSPIN rate of ILI by locality and jurisdiction, weeks 17 - 18, 2018.

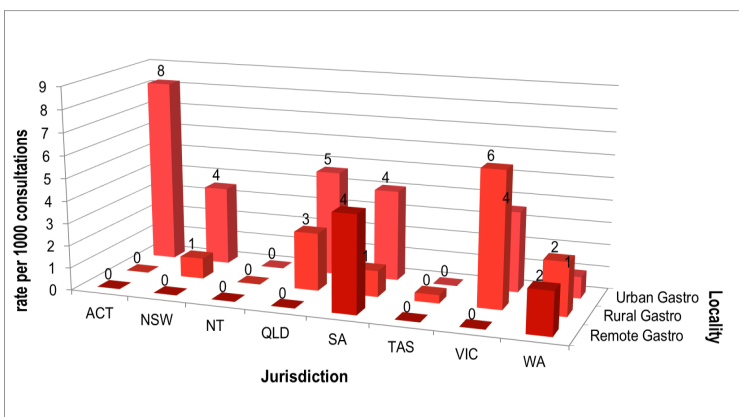


Figure 3. ASPREN rate of gastroenteritis by locality and jurisdiction, weeks 17 - 18, 2018.

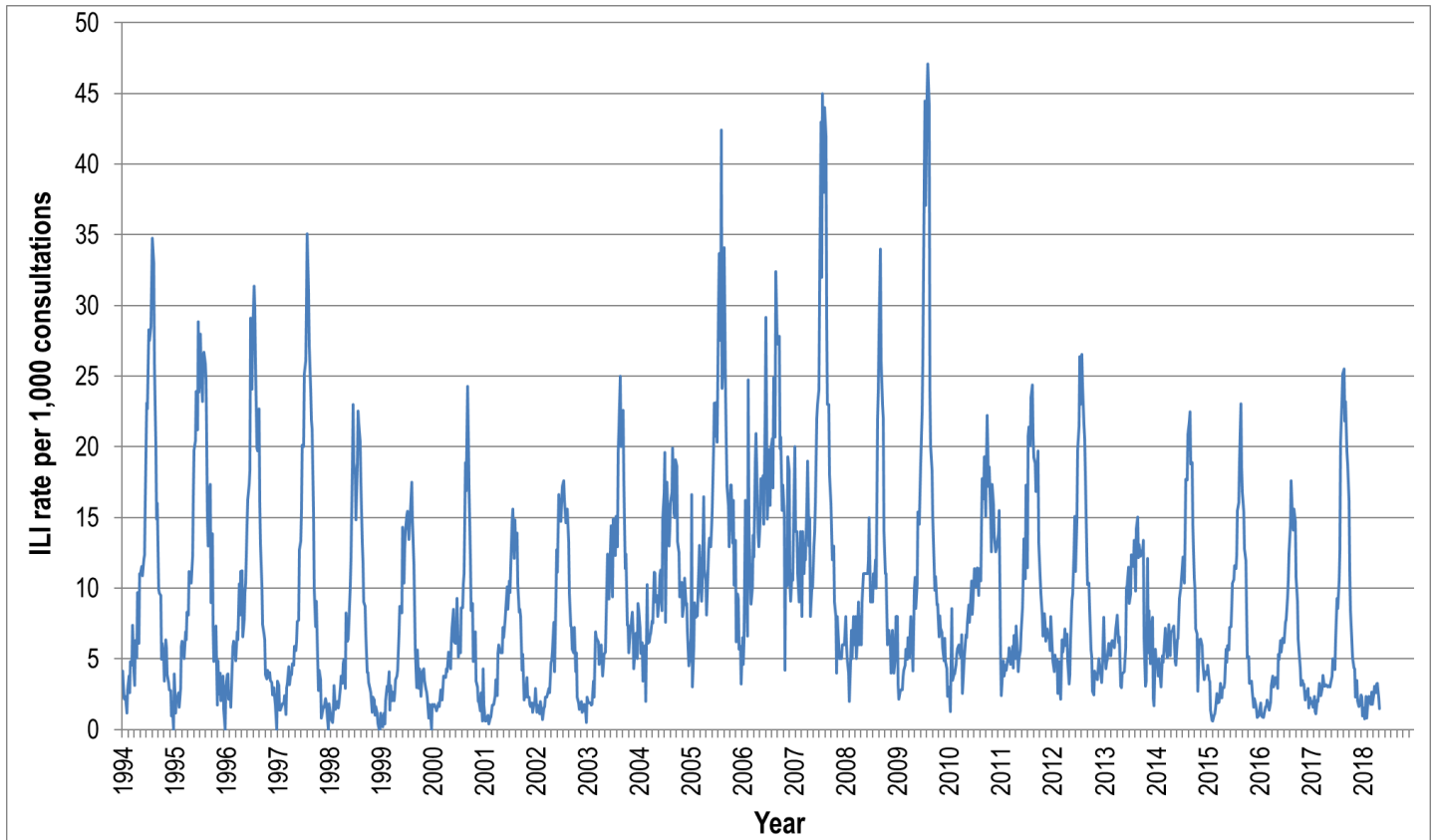


Figure 4. ASPREN ILI rates 1994 - 2017.

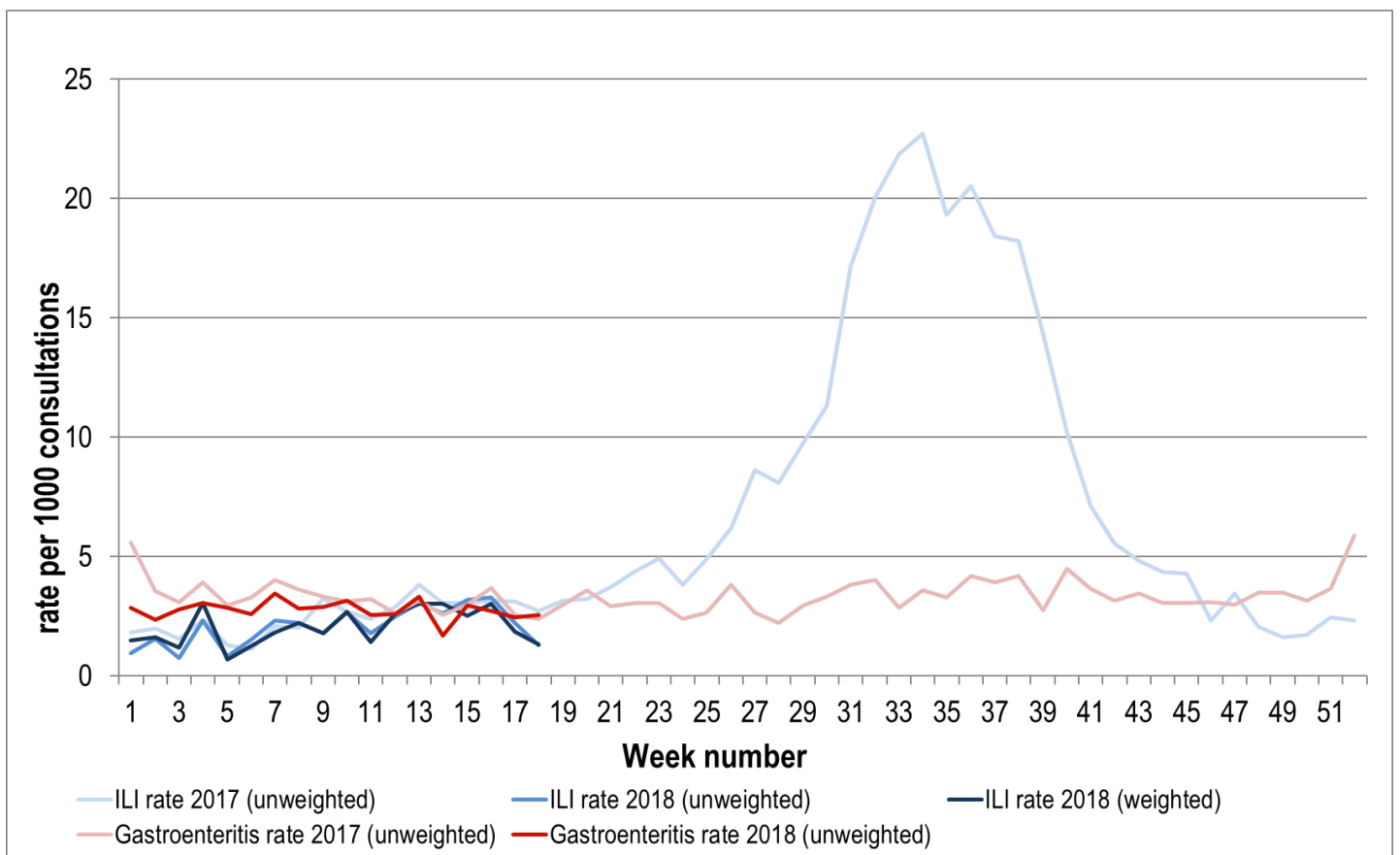


Figure 5. ASPREN + VicSPIN ILI and ASPREN gastroenteritis rates 2017-18. Weighted rates are weighted to account for population size differences between jurisdictions, using population estimates from the 2011 Australian Census.

VIROLOGICAL SURVEILLANCE

60% of all ILI patients were swab tested during weeks 17 - 18 (see Figure 6). 2 cases of Influenza were detected during this period. There were also 9 cases of Rhinovirus detected making it the most common respiratory virus circulating the nation at present (see figure 8).

Viral laboratory data are provided by SA Pathology, PathWest and VicSPIN laboratories.

	Reporting Period 23 April - 6 May 2018	YTD 1 Jan - 6 May 2018
Total number of ILI notifications	77	709
Number of swab tests performed	46	319
% ILI patients tested	60%	45%
% of swab tests positive for influenza	4%	9%

Figure 6. ASPREN + VicSPIN virological surveillance results overview for 2018 #

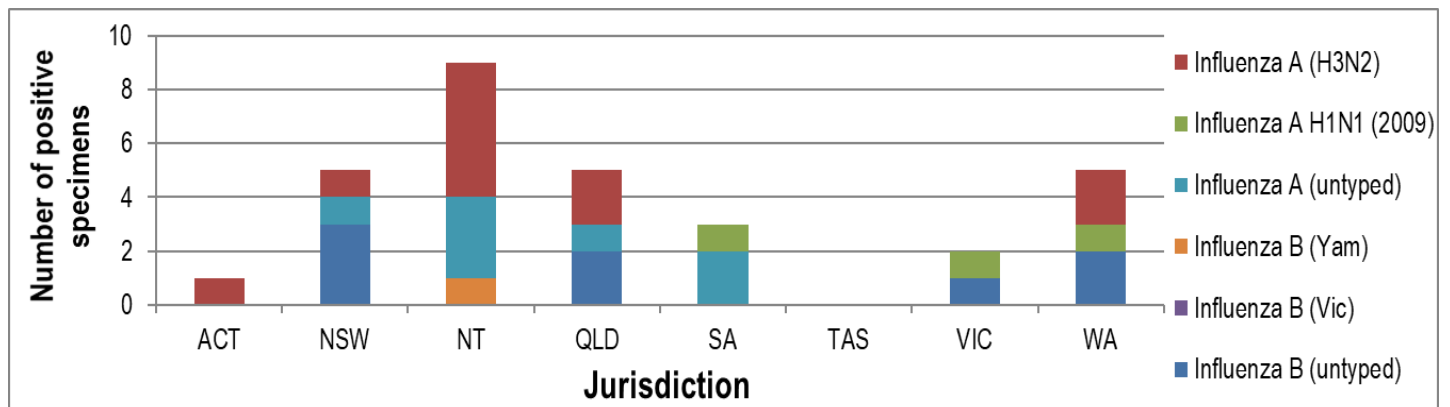


Figure 7. ASPREN + VicSPIN influenza subtype analysis by jurisdiction for 2018 #

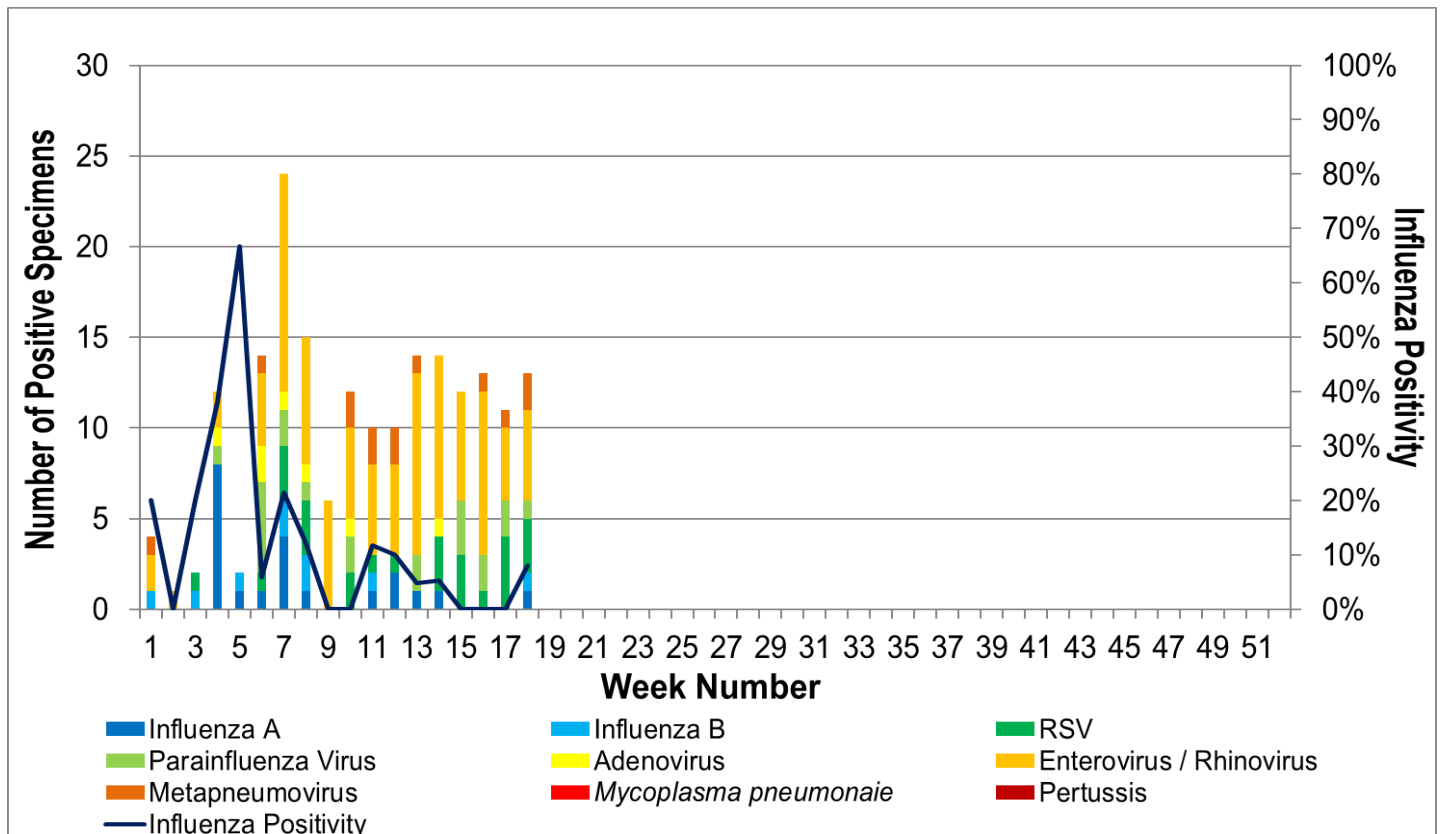


Figure 8. ASPREN, VicSPIN laboratory detection of influenza and other respiratory viruses for 2018 #

The Australian Sentinel Practices Research Network is supported by the Australian Government Department of Health (the Department). The opinions expressed in this paper are those of the authors, and do not necessarily represent the views of the Department

Please note: This report is based on data available as at 1 June 2018. Delays in the reporting of data may cause data to change retrospectively.