

**NATIONAL PRIMARY CARE INFECTIOUS DISEASES  
SENTINEL SURVEILLANCE FORTNIGHTLY REPORT**

Combining data from The Australian Sentinel Practices Research Network (ASPREN)\* and the Victorian Sentinel Practitioners Influenza Network (VicSPIN)\*

No. 04, 2019 - 11th February — 24th February 2019

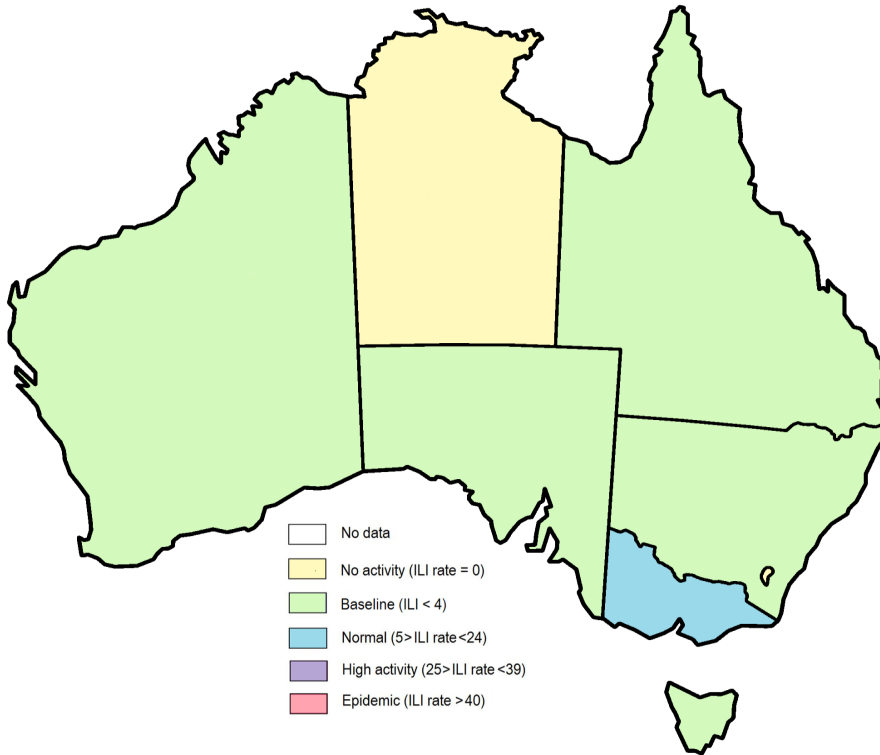


Figure 1. Map of ILI activity by jurisdiction, weeks 07 - 08, 2019.

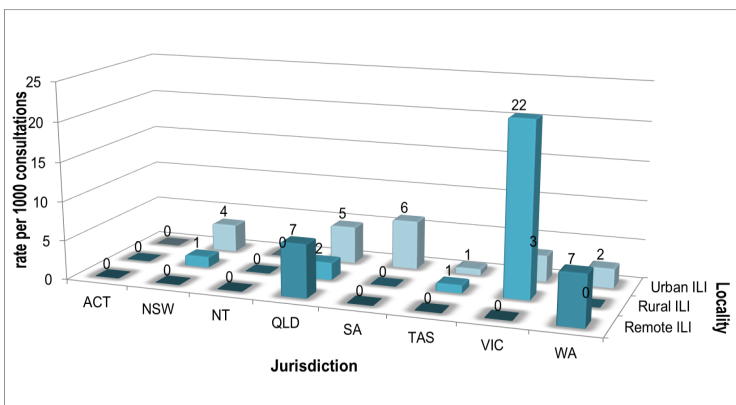


Figure 2. ASPREN + VicSPIN rate of ILI by locality and jurisdiction, weeks 07 - 08, 2019.

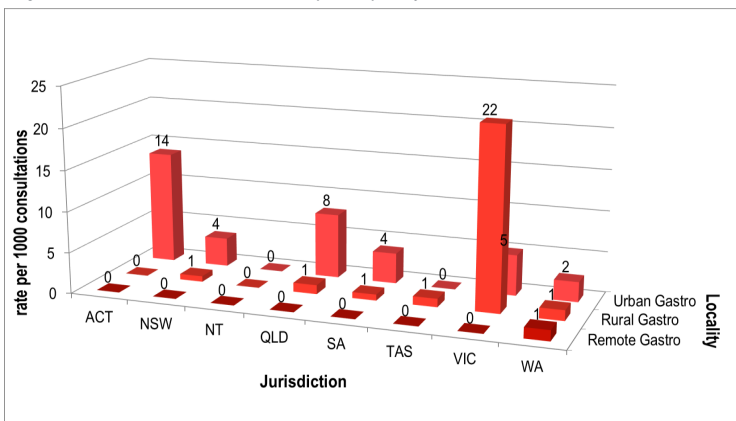


Figure 3. ASPREN rate of gastroenteritis by locality and jurisdiction, weeks 07 - 08, 2019.

**NATIONAL SUMMARY**



Influenza-like-illness levels are increasing

**4**

Case of influenza have been detected in this reporting period  
4 x Influenza A  
0 x Influenza B

**11%**

Influenza positivity during the reporting period.

**27**

Cases of influenza have been detected this year:  
27 x Influenza A  
0 x Influenza B



Gastroenteritis levels remain steady at baseline levels

**SYNDROMIC SURVEILLANCE  
REPORTING**

Reports were received from 236 reporters from 8 states and territories during the reporting period. During weeks 7 and 8 reporters saw a total of 28,299 patients.

**INFLUENZA-LIKE-ILLNESS (ILI)**

Nationally, ILI notifications significantly increased during the period with 81 notifications being reported in weeks 7—8. ILI rates reported in this period increased to 3 and 5 cases per 1000 consultations (weighted) in weeks 7 and 8 respectively. This was higher than the previous fortnight where rates were 4 and 2 cases per 1000 consultations. For the same reporting period in 2018, ILI rates were lower at 2 cases per 1000 consultations for weeks 7 and 8 (see Fig. 5).

**GASTROENTERITIS**

Nationally, gastroenteritis notifications remained steady over the period with 88 notifications reported. Gastroenteritis rates reported in this period remained steady at 3 cases per 1000 consultations in both weeks 7 and 8, compared to 3 per 1000 consultations in weeks 5 and 6 (see Fig. 5).

\* ASPREN is funded by the Commonwealth's Department of Health, Office of Health Protection, Vaccine Preventable Disease Surveillance Section.

\* VicSPIN is funded by Melbourne Health and the Victorian Infectious Diseases Reference Laboratory.

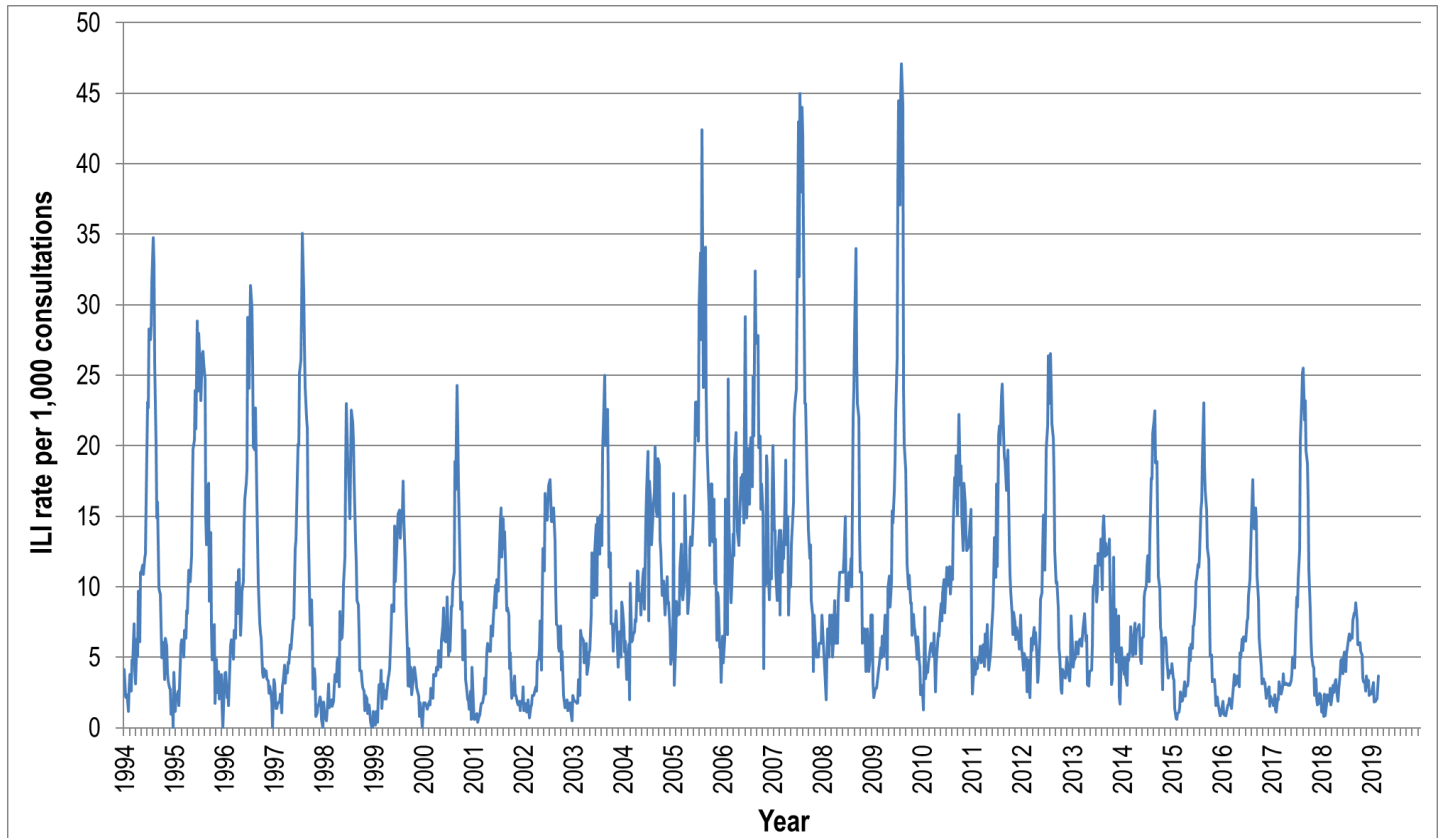


Figure 4. ASPREN ILI rates 1994 - 2019.

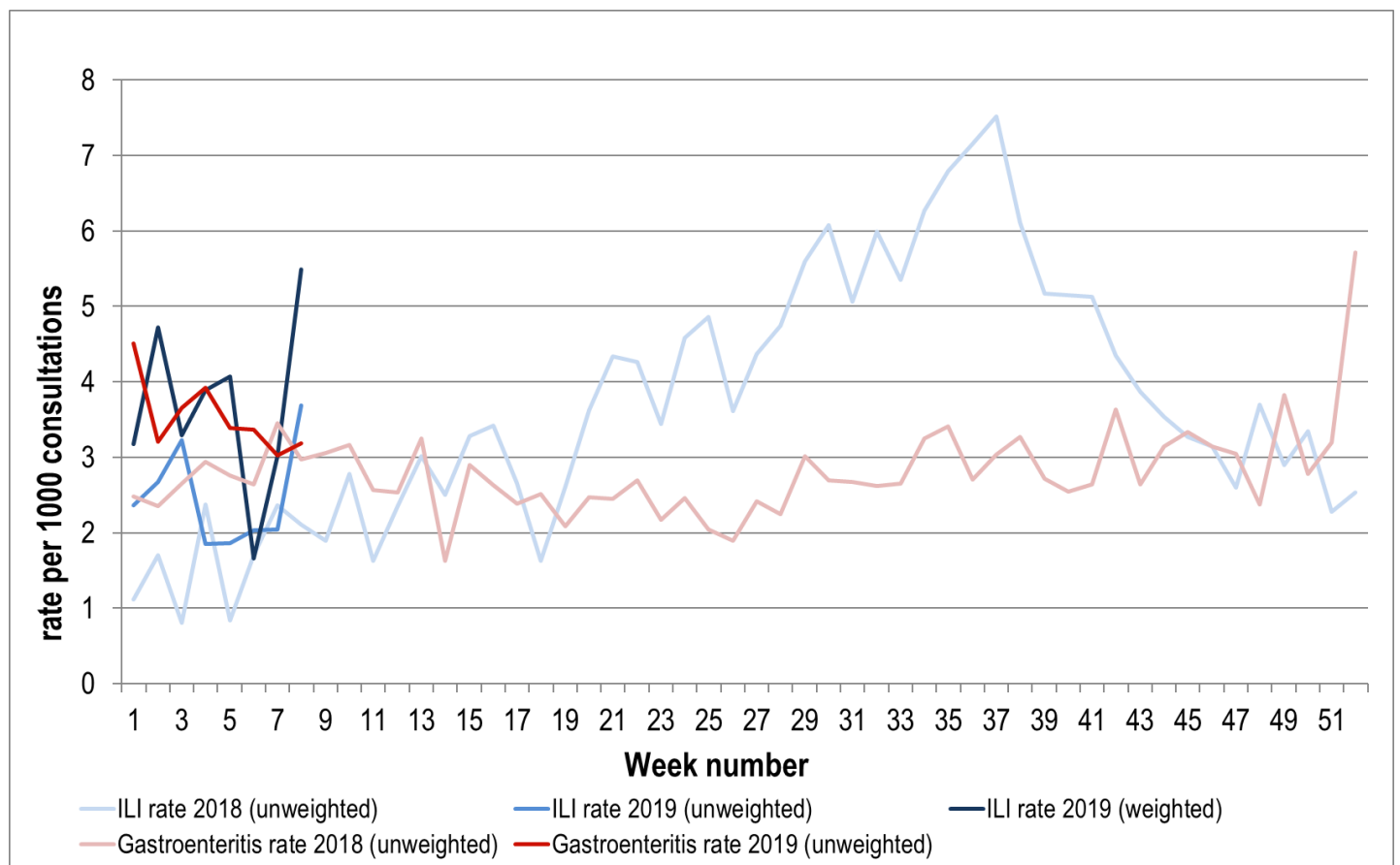


Figure 5. ASPREN + VicSPIN ILI and ASPREN gastroenteritis rates 2018-19. Weighted rates are weighted to account for population size differences between jurisdictions, using population estimates from the 2011 Australian Census.

### VIROLOGICAL SURVEILLANCE

43% of all ILI patients were swab tested during weeks 7 - 8 (see Figure 6). 4 cases of Influenza were detected during this period. There were also 7 cases of Rhinovirus detected making it the most common respiratory virus circulating the nation at present (see figure 8).

# Viral laboratory data are provided by SA Pathology and VicSPIN laboratories.

	Reporting Period	YTD
	11 Feb - 24 Feb 2019	1 Jan - 24 Feb 2019
Total number of ILI notifications	81	252
Number of swab tests performed	35	115
% ILI patients tested	43%	46%
% of swab tests positive for influenza	11%	23%

Figure 6. ASPREN + VicSPIN virological surveillance results overview for 2019 #

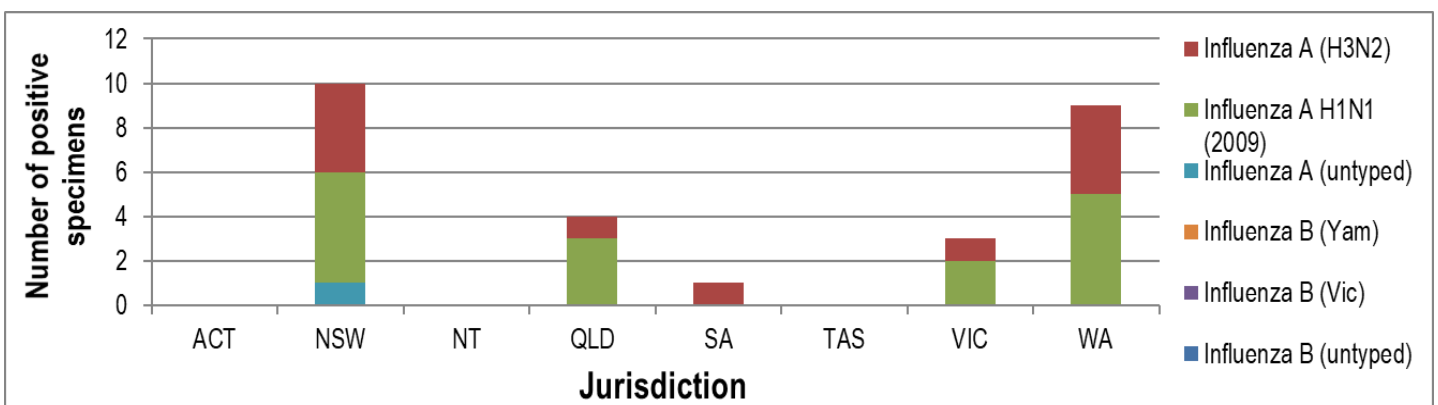


Figure 7. ASPREN + VicSPIN influenza subtype analysis by jurisdiction for 2019 #

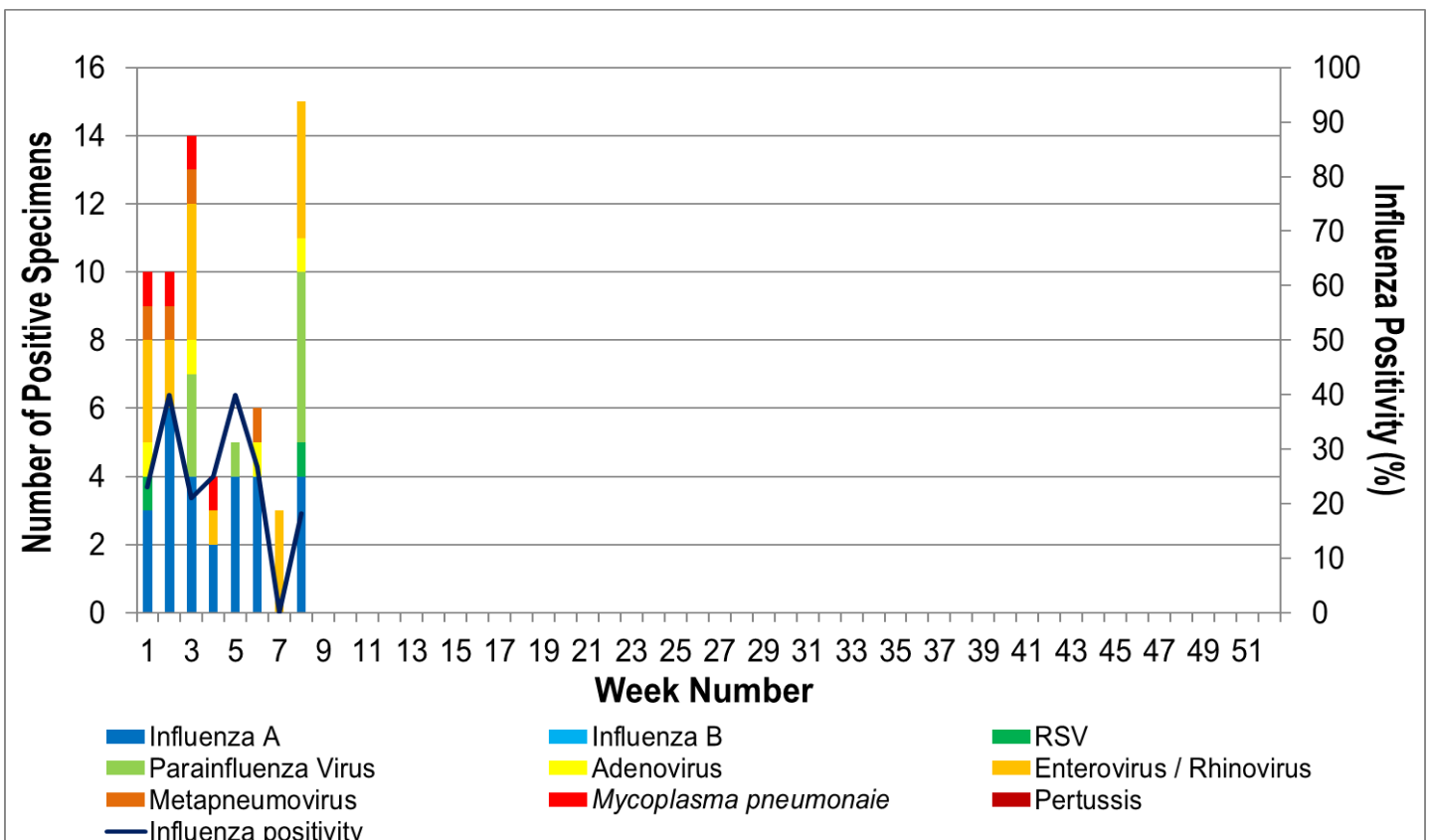


Figure 8. ASPREN, VicSPIN laboratory detection of influenza and other respiratory viruses for 2019 #