

**NATIONAL PRIMARY CARE INFECTIOUS DISEASES
SENTINEL SURVEILLANCE FORTNIGHTLY REPORT**

Combining data from The Australian Sentinel Practices Research Network (ASPREN)*
and the Victorian Sentinel Practitioners Influenza Network (VicSPIN)*

No. 03, 2019 - 28th January — 10th February 2019

NATIONAL SUMMARY

8 Influenza-like-illness levels remain steady at baseline levels

8 Case of influenza have been detected in this reporting period

8 x Influenza A
0 x Influenza B

32% Influenza positivity during the reporting period.

23 Cases of influenza have been detected this year:

23 x Influenza A
0 x Influenza B

8 Gastroenteritis levels remain steady at baseline levels

**SYNDROMIC SURVEILLANCE
REPORTING**

Reports were received from 239 reporters from 8 states and territories during the reporting period. During weeks 5 and 6 reporters saw a total of 26,047 patients.

INFLUENZA-LIKE-ILLNESS (ILI)

Nationally, ILI notifications decreased during the period with 51 notifications being reported in weeks 5–6. ILI rates reported in this period remained steady at 4 and 2 cases per 1000 consultations (weighted) in weeks 5 and 6 respectively. This was similar to the previous fortnight where rates were 3 and 4 cases per 1000 consultations. For the same reporting period in 2018, ILI rates were lower at 1 cases per 1000 consultations for weeks 5 and 6 respectively (see Fig. 5).

GASTROENTERITIS

Nationally, gastroenteritis notifications decreased over the period with 88 notifications reported. Gastroenteritis rates reported in this period decreased slightly to 3 cases per 1000 consultations in both weeks 5 and 6, compared to 4 per 1000 consultations in weeks 3 and 4 (see Fig. 5).

* ASPREN is funded by the Commonwealth's Department of Health, Office of Health Protection, Vaccine Preventable Disease Surveillance Section.

* VicSPIN is funded by Melbourne Health and the Victorian Infectious Diseases Reference Laboratory.

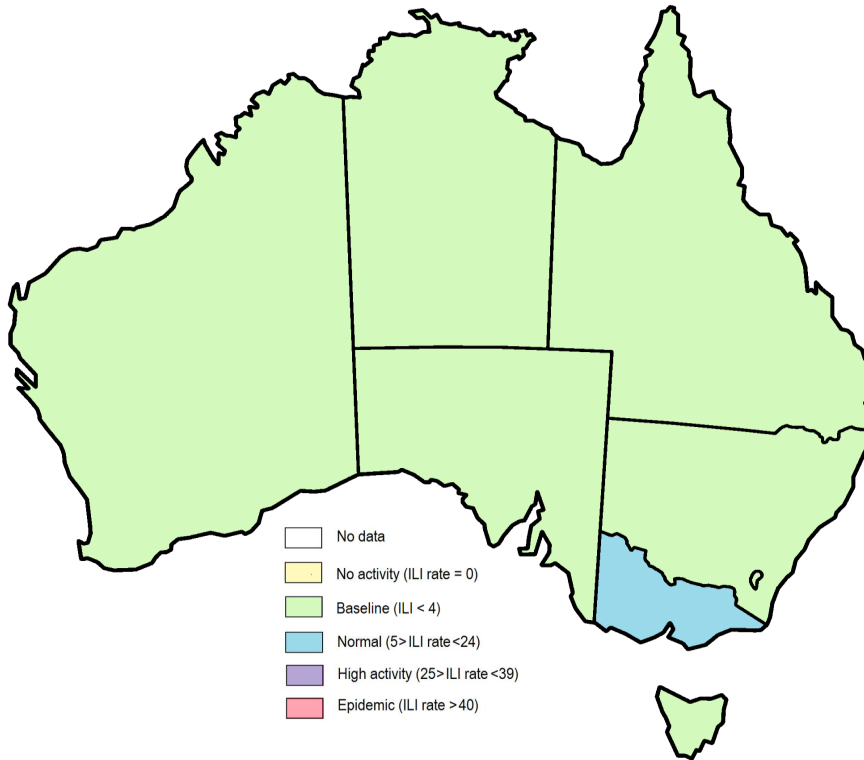


Figure 1. Map of ILI activity by jurisdiction, weeks 05 - 06, 2019.

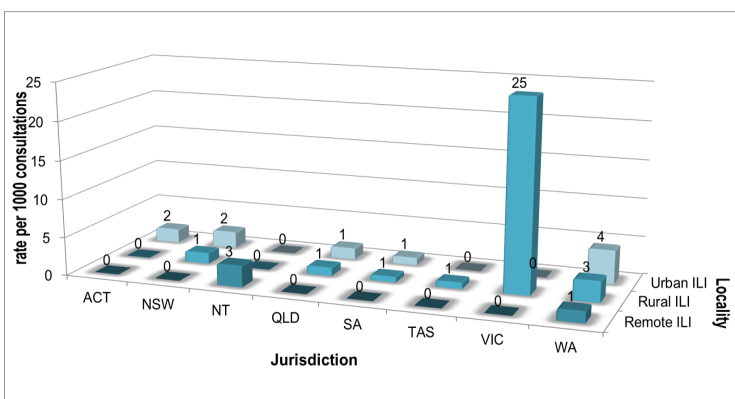


Figure 2. ASPREN + VicSPIN rate of ILI by locality and jurisdiction, weeks 05 - 06, 2019.

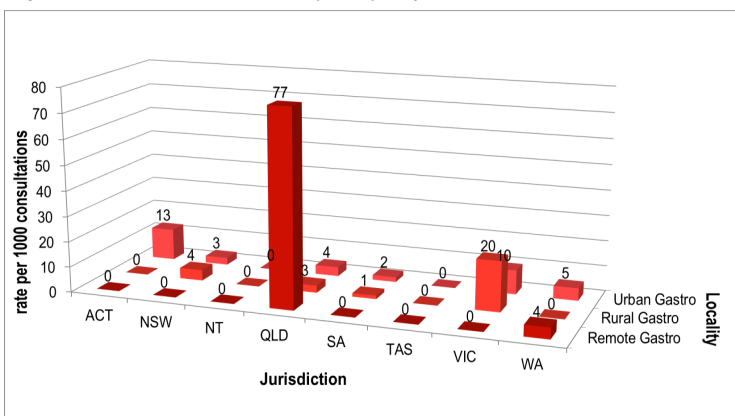


Figure 3. ASPREN rate of gastroenteritis by locality and jurisdiction, weeks 05 - 06, 2019.

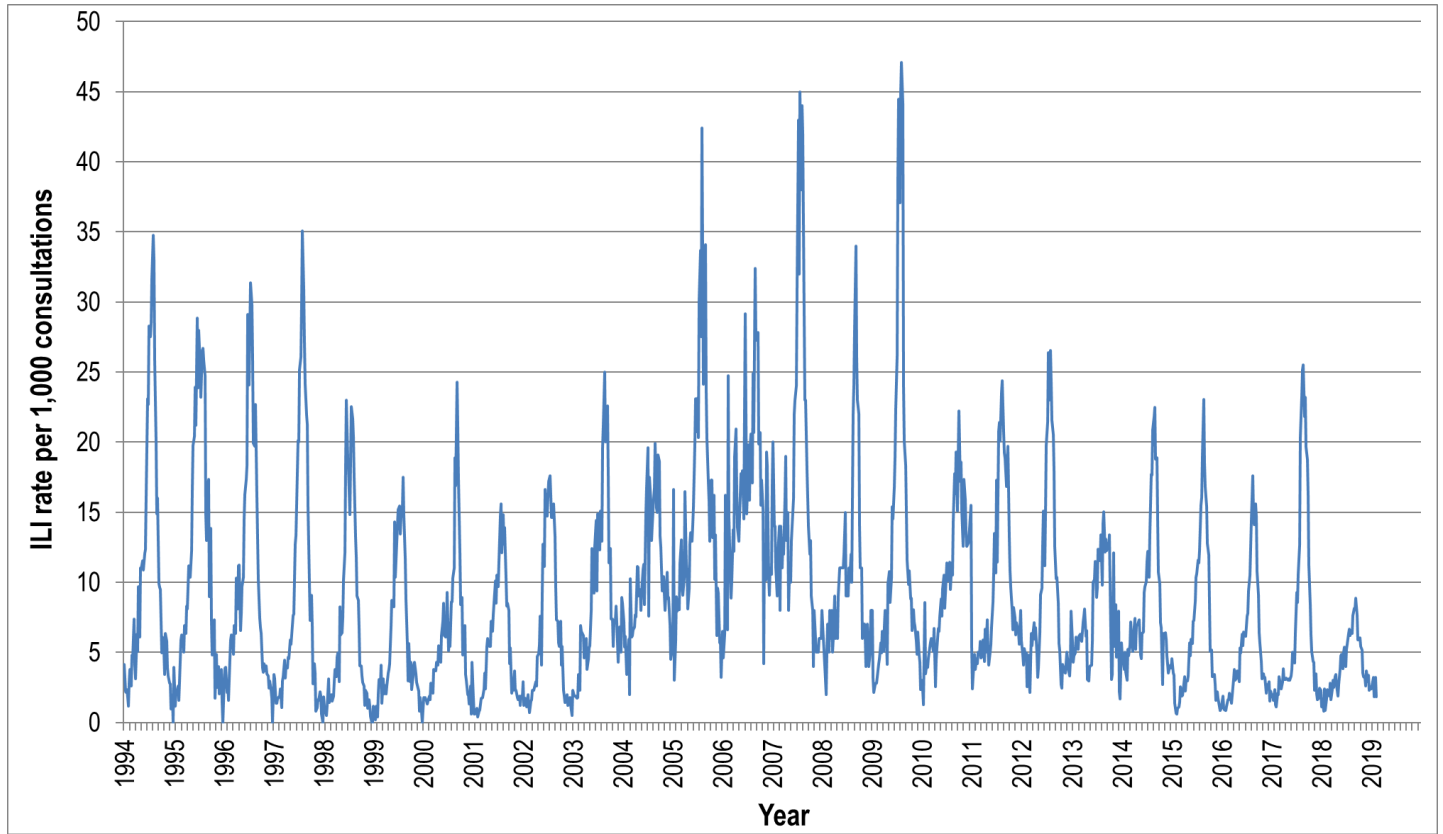


Figure 4. ASPREN ILI rates 1994 - 2019.

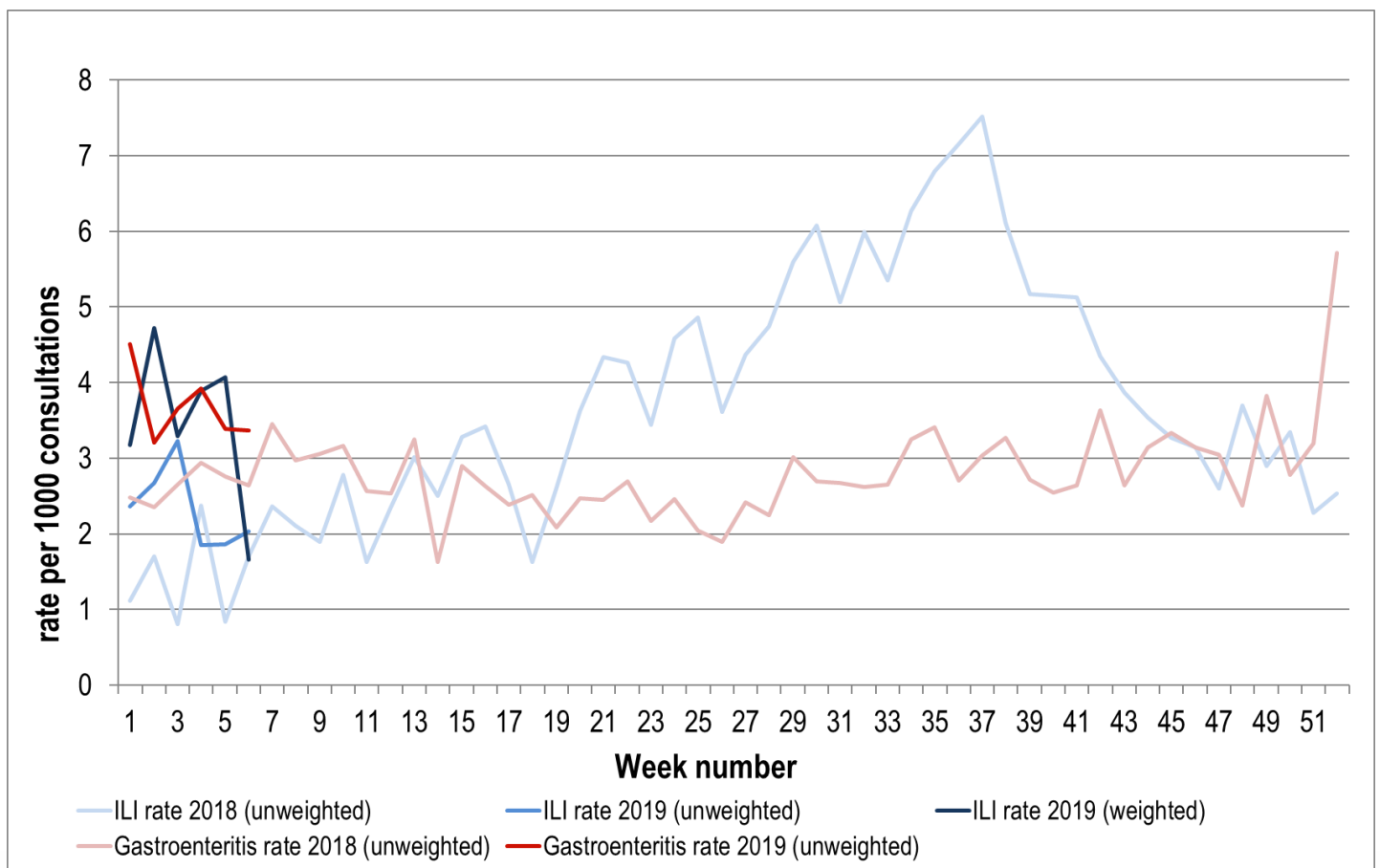


Figure 5. ASPREN + VicSPIN ILI and ASPREN gastroenteritis rates 2018-19.

VIROLOGICAL SURVEILLANCE

49% of all ILI patients were swab tested during weeks 5 - 6 (see Figure 6). 8 cases of Influenza were detected during this period making it the most common respiratory virus circulating the nation at present (see figure 8).

Viral laboratory data are provided by SA Pathology and VicSPIN laboratories.

	Reporting Period	YTD
	28 Jan - 10 Feb 2019	1 Jan - 10 Feb 2019
Total number of ILI notifications	51	171
Number of swab tests performed	25	80
% ILI patients tested	49%	47%
% of swab tests positive for influenza	32%	29%

Figure 6. ASPREN + VicSPIN virological surveillance results overview for 2019 #

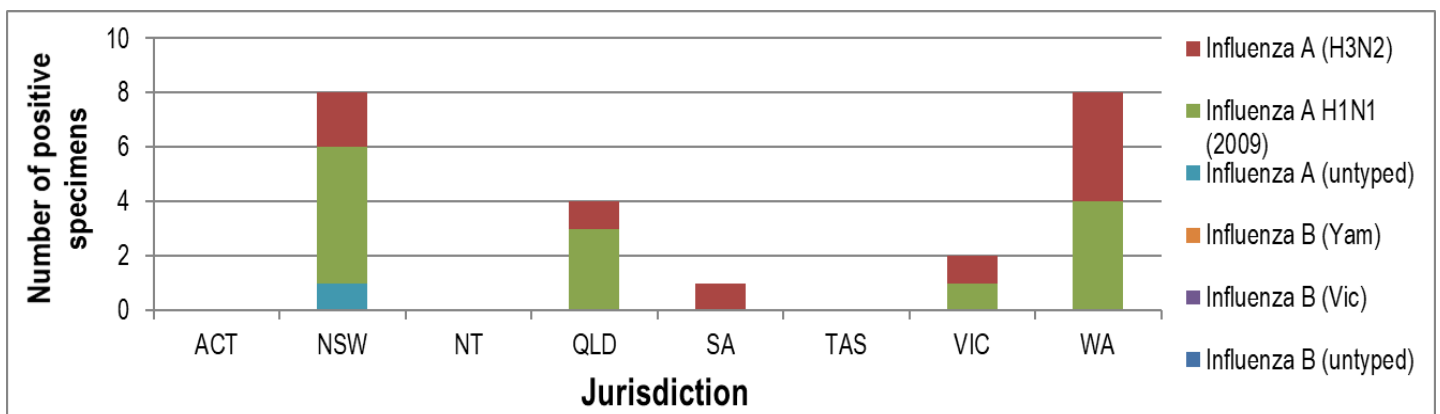


Figure 7. ASPREN + VicSPIN influenza subtype analysis by jurisdiction for 2019 #

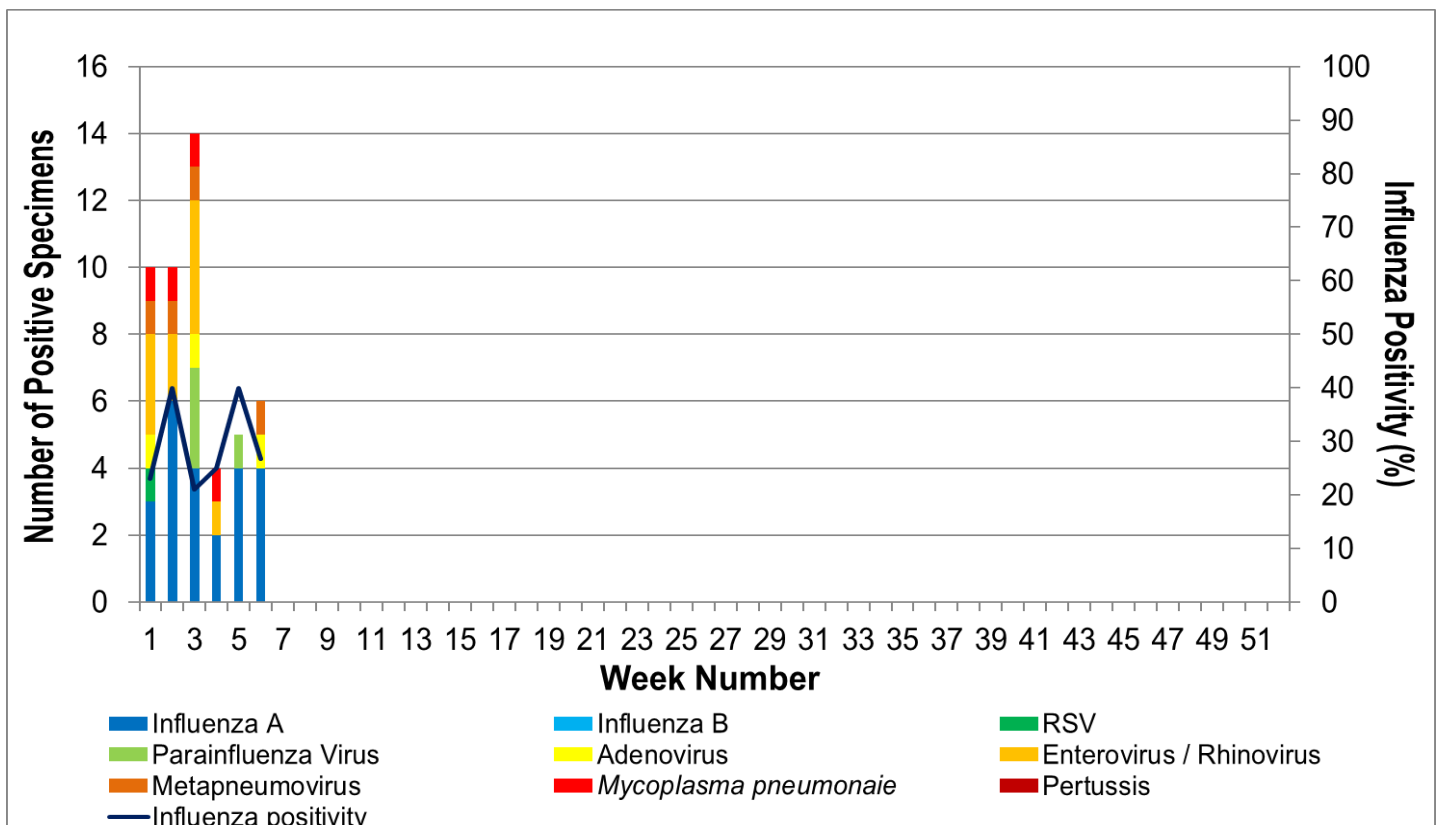


Figure 8. ASPREN, VicSPIN laboratory detection of influenza and other respiratory viruses for 2019 #

The Australian Sentinel Practices Research Network is supported by the Australian Government Department of Health (the Department). The opinions expressed in this paper are those of the authors, and do not necessarily represent the views of the Department.

Please note: This report is based on data available as at 28 February 2019. Delays in the reporting of data may cause data to change retrospectively.