

**NATIONAL PRIMARY CARE INFECTIOUS DISEASES
SENTINEL SURVEILLANCE FORTNIGHTLY REPORT**

Combining data from The Australian Sentinel Practices Research Network (ASPREN)*
and the Victorian Sentinel Practitioners Influenza Network (VicSPIN)*

No. 14, 2020 - 29th June — 12th July 2020

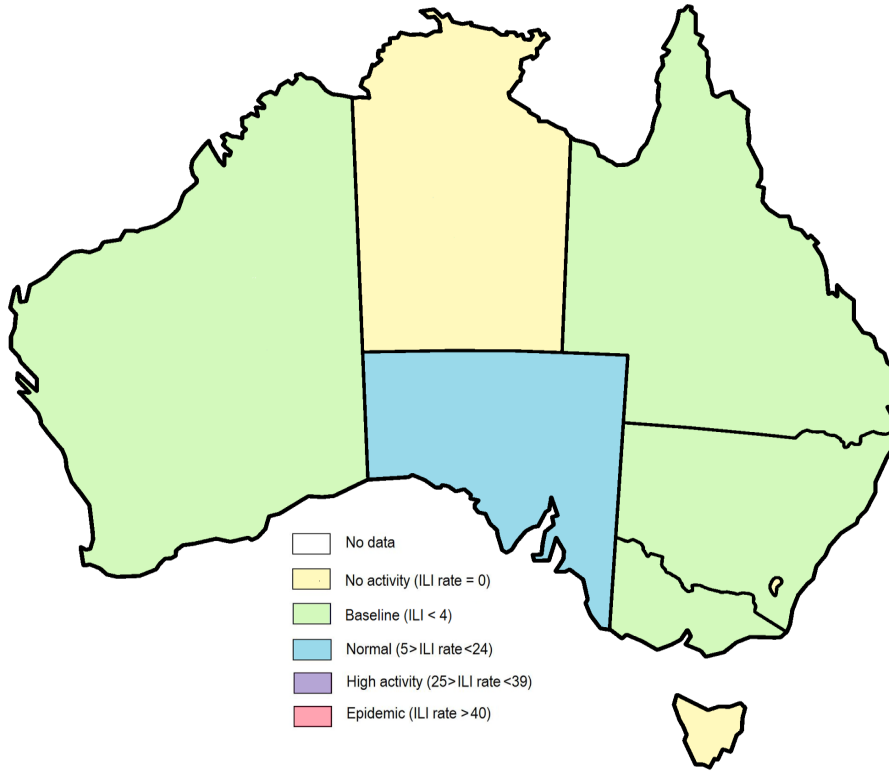


Figure 1. Map of ILI activity by jurisdiction, weeks 27 - 28, 2020.

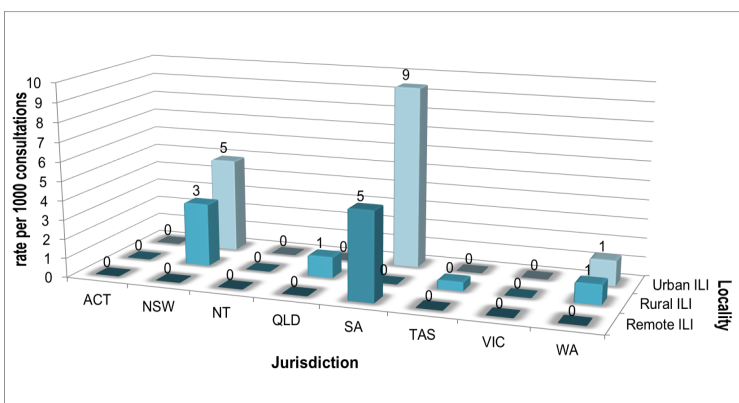


Figure 2. ASPREN + VicSPIN rate of ILI by locality and jurisdiction, weeks 27 - 28, 2020.

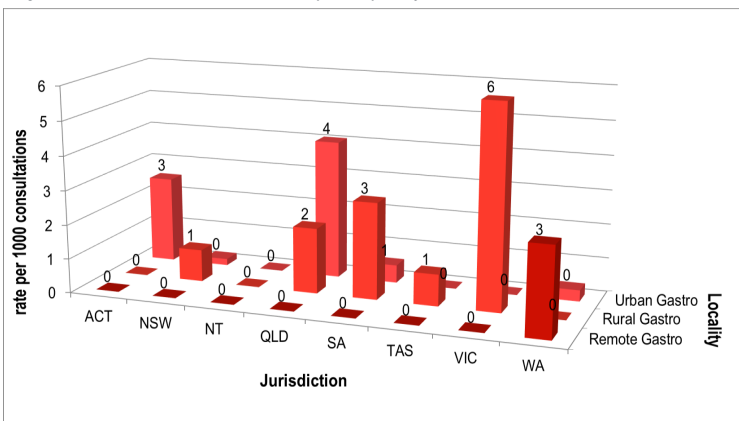


Figure 3. ASPREN rate of gastroenteritis by locality and jurisdiction, weeks 27 - 28, 2020.

NATIONAL SUMMARY

0 Influenza-like-illness levels remain steady at baseline levels

0 Case of influenza have been detected in this reporting period
0 x Influenza A
0 x Influenza B

0% Influenza positivity during the reporting period.

21 Cases of influenza have been detected this year:
19 x Influenza A
2 x Influenza B

0 Gastroenteritis levels remain steady below baseline levels

**SYNDROMIC SURVEILLANCE
REPORTING**

Reports were received from 245 reporters from 8 states and territories during the reporting period. During weeks 27 and 28 reporters saw a total of 37,268 patients.

INFLUENZA-LIKE-ILLNESS (ILI)

Nationally, ILI notifications increased during the period with 71 notifications being reported in weeks 27–28. ILI rates reported in this period remained steady at 2 and 4 cases per 1000 consultations (weighted). This was similar to the previous fortnight where rates were 4 cases per 1000 consultations in weeks 25 and 26. For the same reporting period in 2019, ILI rates were higher at 12 and 14 cases per 1000 consultations for weeks 27 and 28 respectively (see Fig. 5).

GASTROENTERITIS

Nationally, gastroenteritis notifications remained steady over the period with 32 notifications reported. Gastroenteritis rates reported in this period remained steady at 1 and 2 cases per 1000 consultations in both weeks 27 and 28 respectively, compared to 1 case per 1000 consultations in weeks 25 and 26 (see Fig. 5).

* ASPREN is funded by the Commonwealth's Department of Health, Office of Health Protection, Vaccine Preventable Disease Surveillance Section.

* VicSPIN is funded by Melbourne Health and the Victorian Infectious Diseases Reference Laboratory.

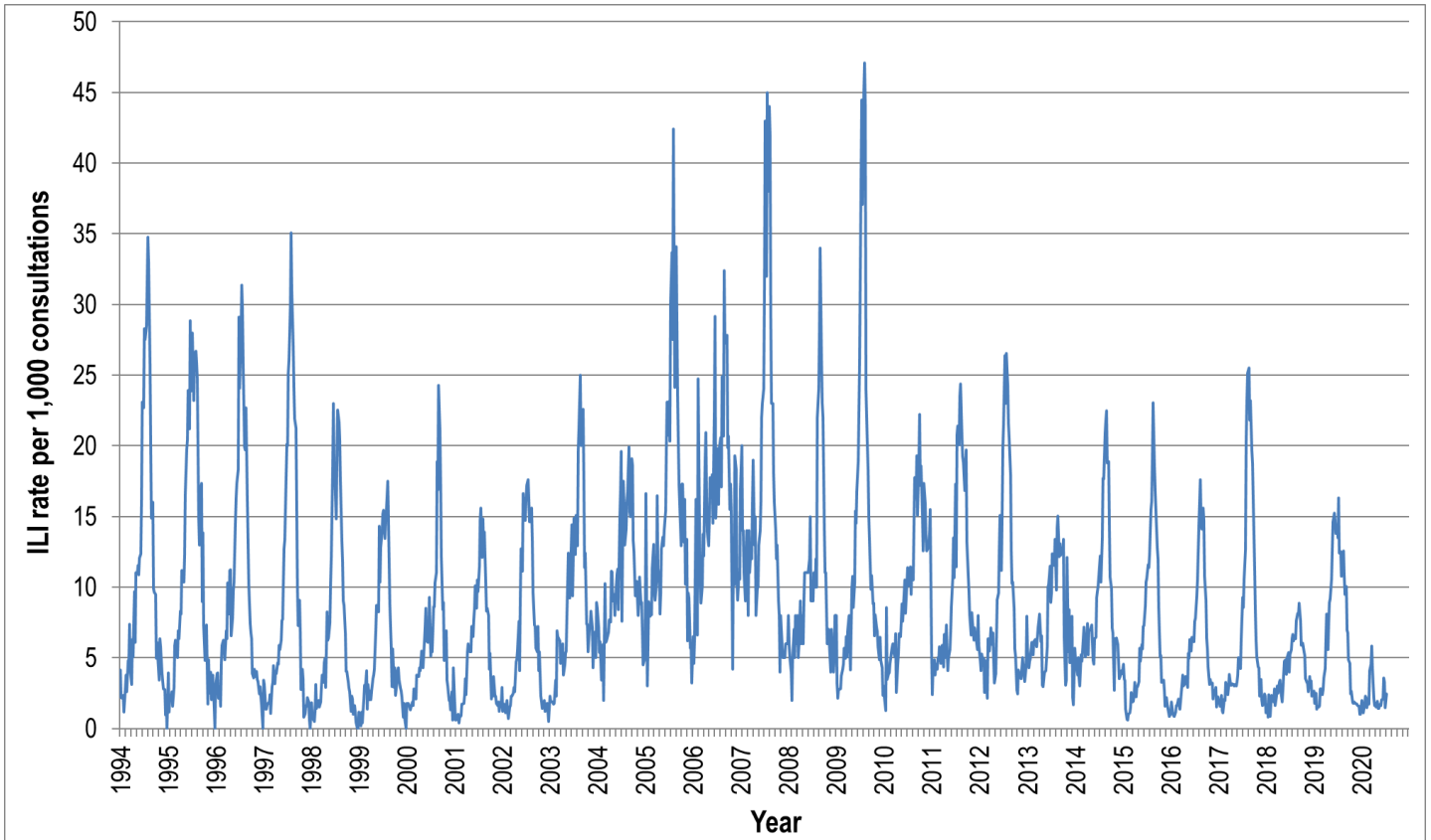


Figure 4. ASPREN ILI rates 1994 - 2020.

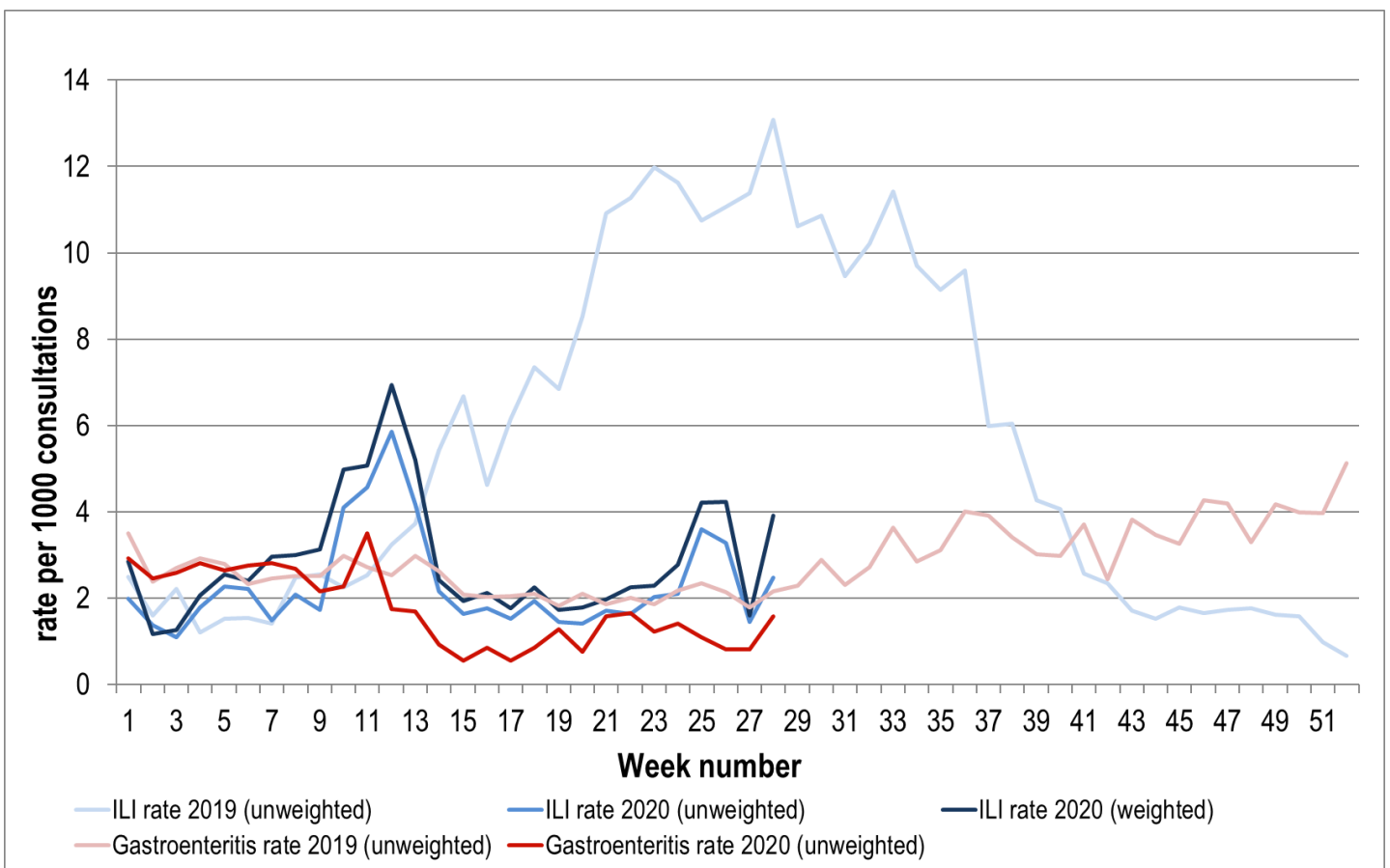


Figure 5. ASPREN + VicSPIN ILI and ASPREN gastroenteritis rates 2019-20. Weighted rates are weighted to account for population size differences between jurisdictions, using population estimates from the 2011 Australian Census.

VIROLOGICAL SURVEILLANCE

59% of all ILI patients were swab tested during weeks 27 and 28 (see Figure 6).

No cases of Influenza were detected during this period. There were 24 cases of Rhinovirus detected making it the most common respiratory virus circulating the nation at present (see figure 8).

Viral laboratory data are provided by SA Pathology and VicSPIN laboratories.

	Reporting Period	
	15 June - 28 June 2020	YTD 1 Jan - 28 June 2020
Total number of ILI notifications	147	1208
Number of swab tests performed	86	595
% ILI patients tested	59%	49%
% of swab tests positive for influenza	0%	4%

Figure 6. ASPREN + VicSPIN virological surveillance results overview for 2020 #

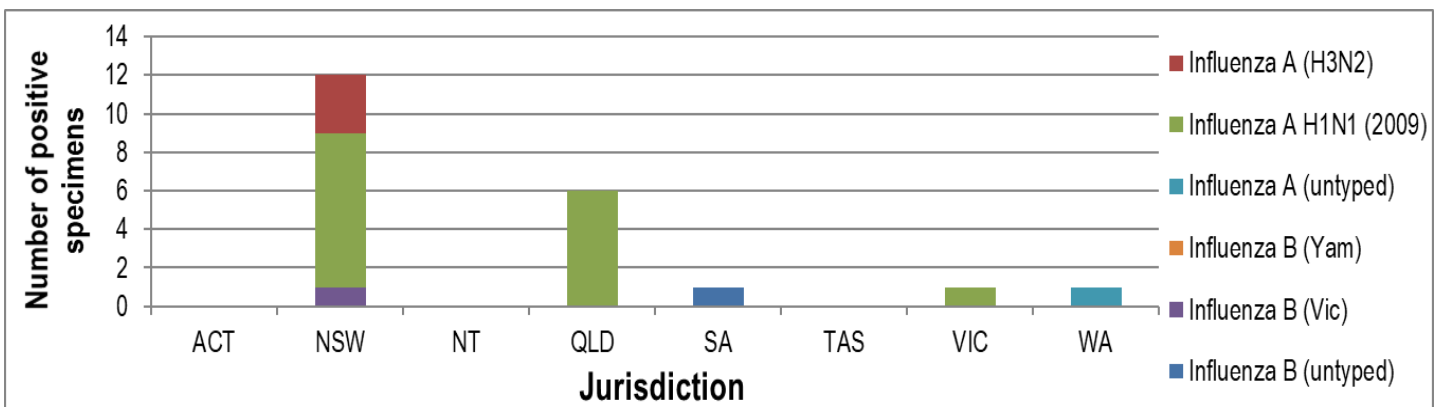


Figure 7. ASPREN + VicSPIN influenza subtype analysis by jurisdiction for 2020 #

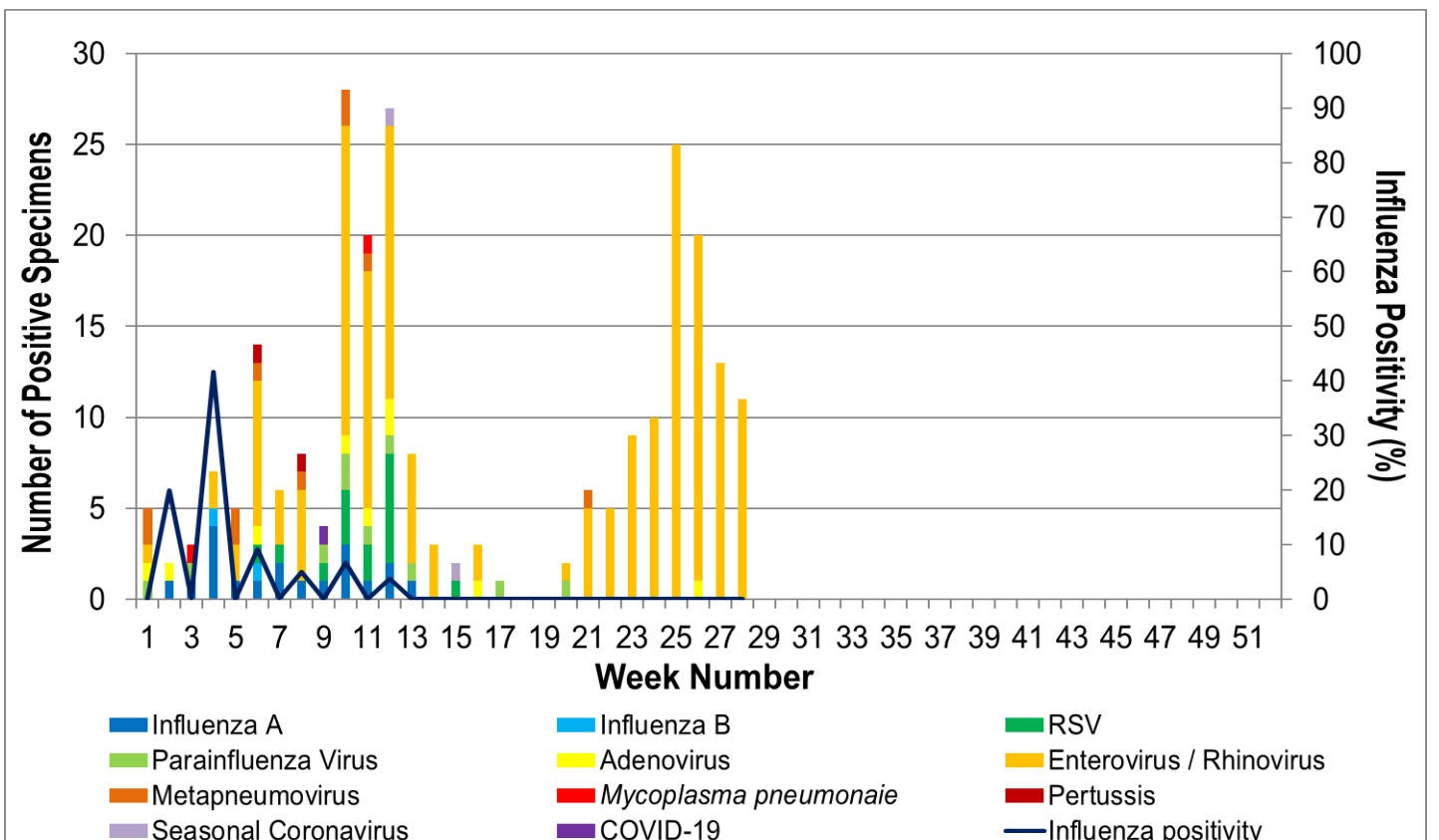


Figure 8. ASPREN, VicSPIN laboratory detection of influenza and other respiratory viruses for 2020 #