

**NATIONAL PRIMARY CARE INFECTIOUS DISEASES
SENTINEL SURVEILLANCE FORTNIGHTLY REPORT**

Combining data from The Australian Sentinel Practices Research Network (ASPREN)*
and the Victorian Sentinel Practitioners Influenza Network (VicSPIN)*

No. 10, 2020 - 4th May — 17th May 2020

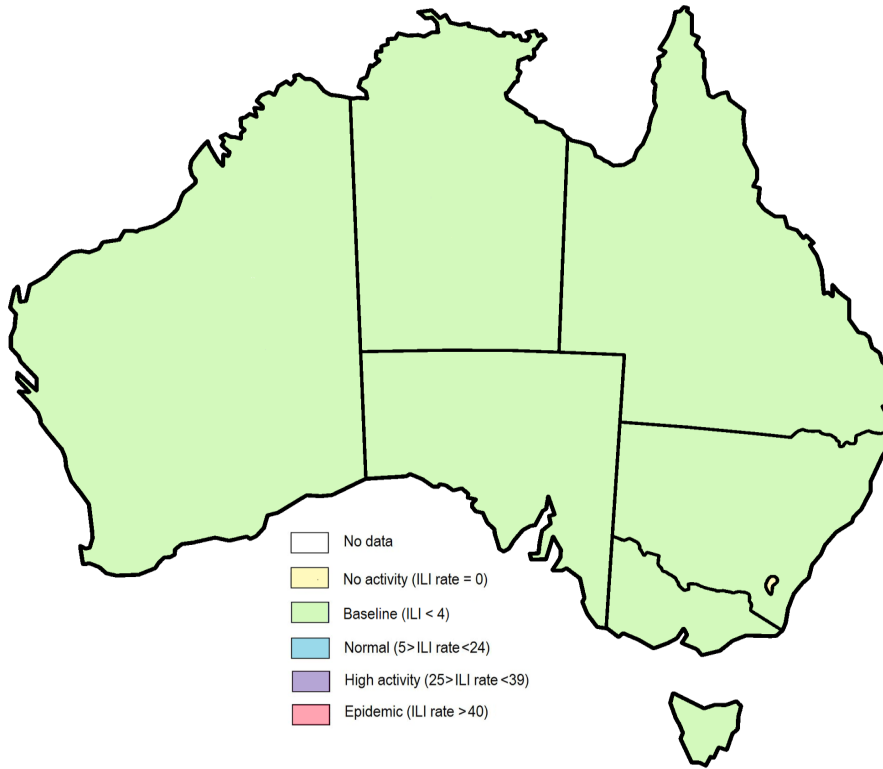


Figure 1. Map of ILI activity by jurisdiction, weeks 19 - 20, 2020.

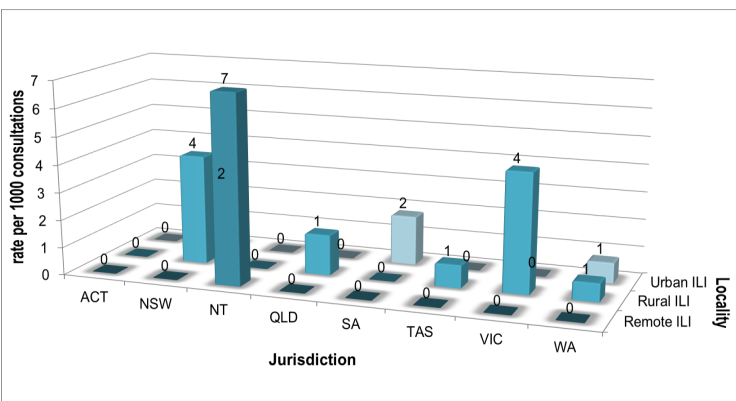


Figure 2. ASPREN + VicSPIN rate of ILI by locality and jurisdiction, weeks 19 - 20, 2020.

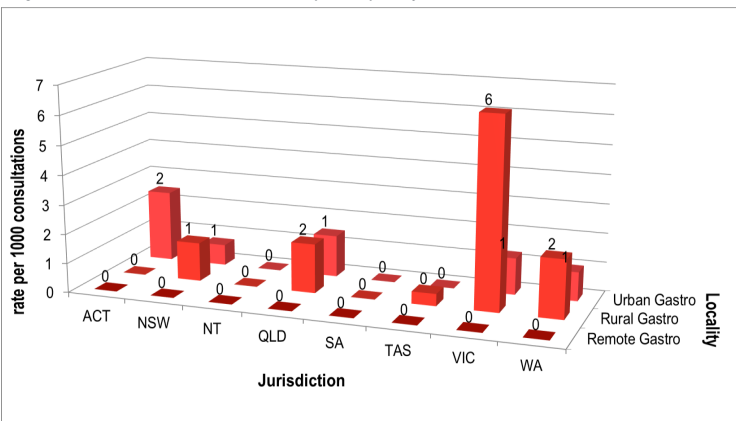



Figure 3. ASPREN rate of gastroenteritis by locality and jurisdiction, weeks 19 - 20, 2020.


NATIONAL SUMMARY

 Influenza-like-illness levels remain steady below baseline levels

0 Case of influenza have been detected in this reporting period
0 x Influenza A
0 x Influenza B

0% Influenza positivity during the reporting period.

21 Cases of influenza have been detected this year:
19 x Influenza A
2 x Influenza B

 Gastroenteritis levels remain steady below baseline levels

**SYNDROMIC SURVEILLANCE
REPORTING**

Reports were received from 243 reporters from 8 states and territories during the reporting period. During weeks 19 and 20 reporters saw a total of 42,694 patients.

INFLUENZA-LIKE-ILLNESS (ILI)

Nationally, ILI notifications decreased during the period with 61 notifications being reported in weeks 19–20. ILI rates reported in this period remained steady at 2 cases per 1000 consultations (weighted). This was similar to the previous fortnight where rates were 2 cases per 1000 consultations in weeks 17 and 18. For the same reporting period in 2019, ILI rates were higher at 7 and 8 cases per 1000 consultations for weeks 19 and 20 (see Fig. 5).

GASTROENTERITIS

Nationally, gastroenteritis notifications increased over the period with 34 notifications reported. Gastroenteritis rates reported in this period remained steady at 1 cases per 1000 consultations in both weeks 19 and 20, compared to 1 cases per 1000 consultations in weeks 17 and 18 (see Fig. 5).

* ASPREN is funded by the Commonwealth's Department of Health, Office of Health Protection, Vaccinable Preventable Disease Surveillance Section.

* VicSPIN is funded by Melbourne Health and the Victorian Infectious Diseases Reference Laboratory.

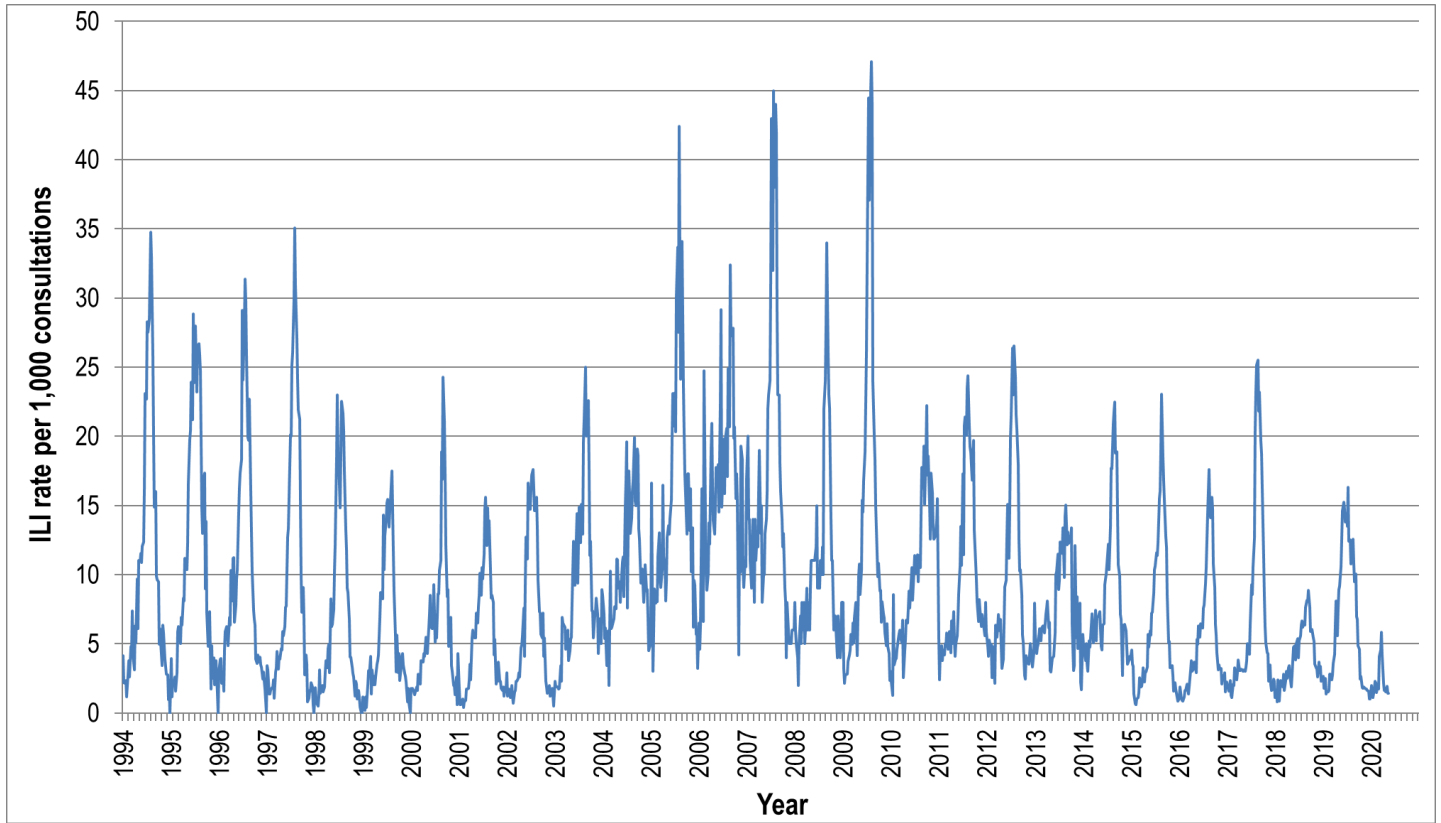


Figure 4. ASPREN ILI rates 1994 - 2020.

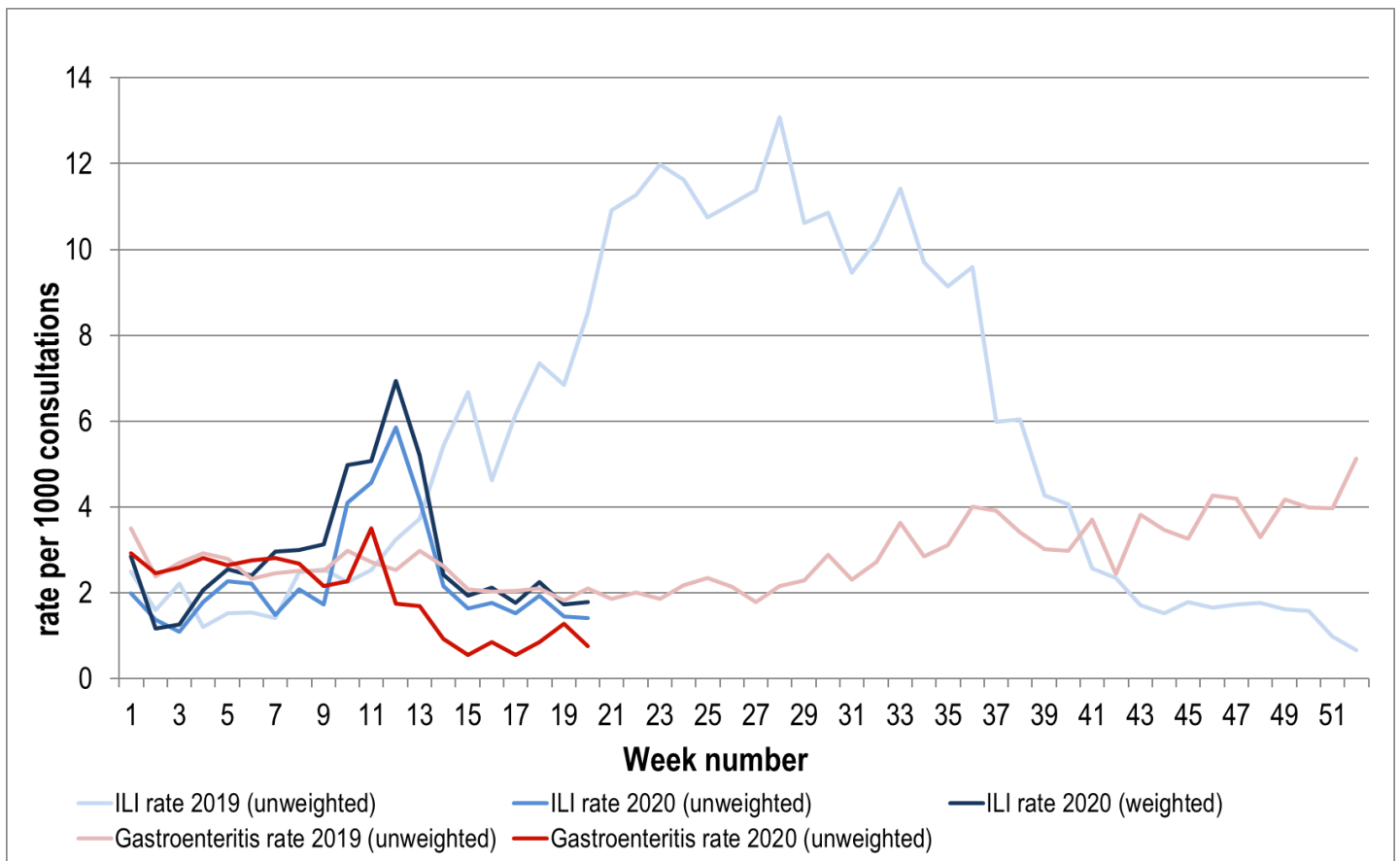


Figure 5. ASPREN + VicSPIN ILI and ASPREN gastroenteritis rates 2019-20. Weighted rates are weighted to account for population size differences between jurisdictions, using population estimates from the 2011 Australian Census.

VIROLOGICAL SURVEILLANCE

82% of all ILI patients were swab tested during weeks 19 and 20 (see Figure 6).

No cases of Influenza were detected during this period. There were no cases of other viruses detected by ASPREN circulating the nation at present (see figure 8).

Viral laboratory data are provided by SA Pathology and VicSPIN laboratories.

	Reporting Period	YTD
	4 May - 17 May 2020	1 Jan - 17 May 2020
Total number of ILI notifications	61	914
Number of swab tests performed	50	426
% ILI patients tested	82%	47%
% of swab tests positive for influenza	0%	5%

Figure 6. ASPREN + VicSPIN virological surveillance results overview for 2020 #

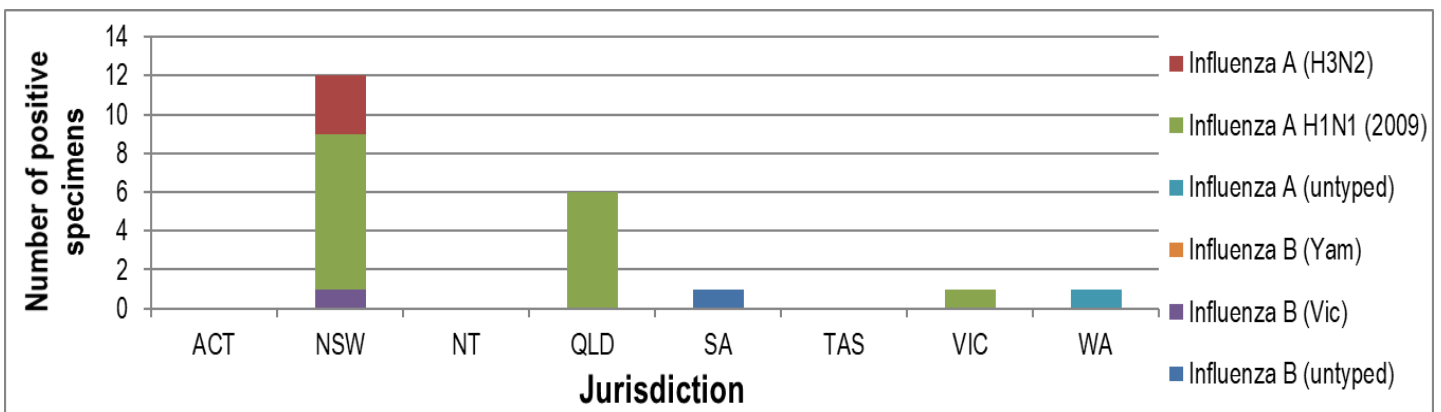


Figure 7. ASPREN + VicSPIN influenza subtype analysis by jurisdiction for 2020 #

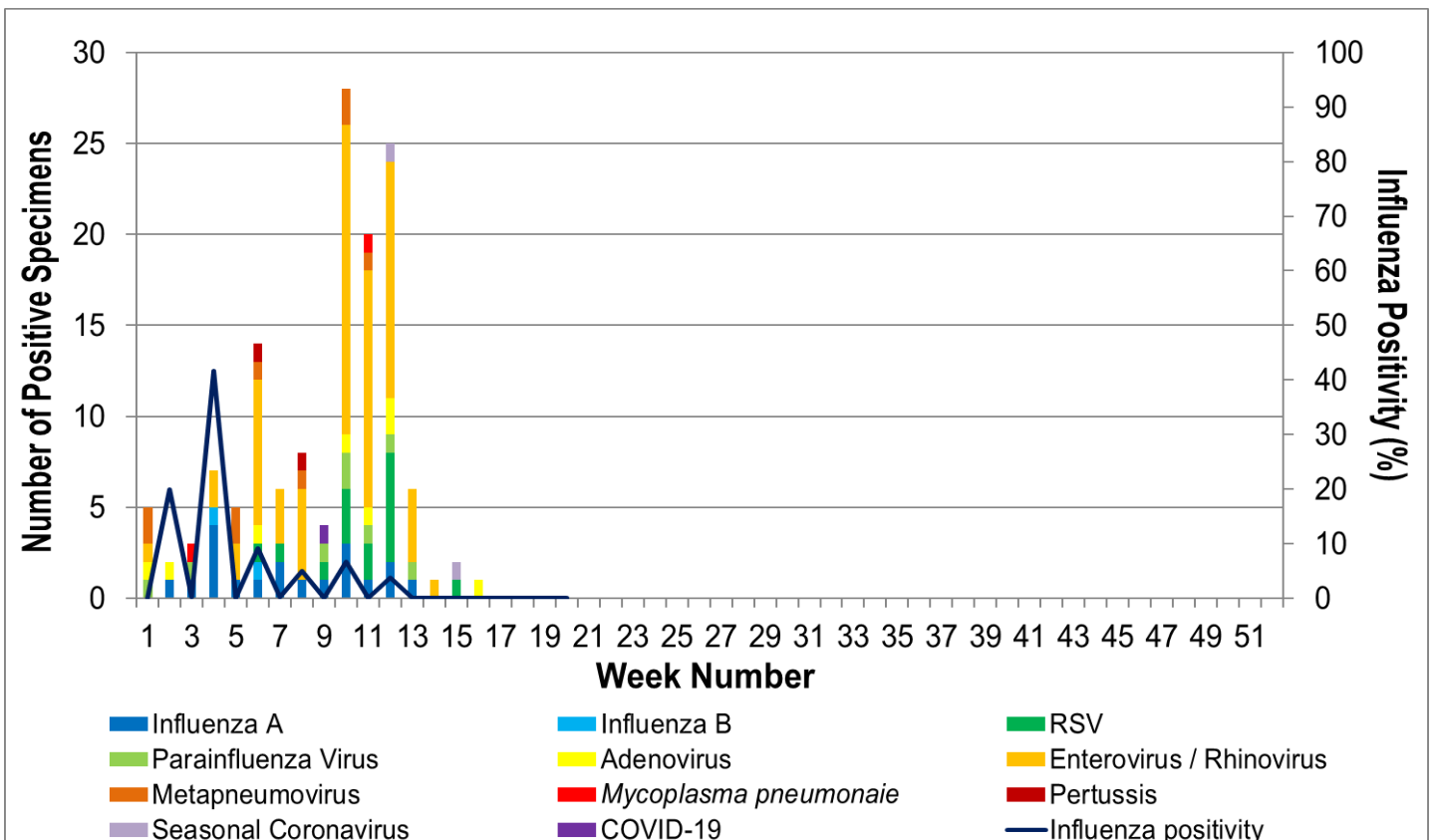


Figure 8. ASPREN, VicSPIN laboratory detection of influenza and other respiratory viruses for 2020 #

The Australian Sentinel Practices Research Network is supported by the Australian Government Department of Health (the Department). The opinions expressed in this paper are those of the authors, and do not necessarily represent the views of the Department.

Please note: This report is based on data available as at 28 May 2020. Delays in the reporting of data may cause data to change retrospectively.