

**NATIONAL PRIMARY CARE INFECTIOUS DISEASES  
SENTINEL SURVEILLANCE FORTNIGHTLY REPORT**

Combining data from The Australian Sentinel Practices Research Network (ASPREN)\*  
and the Victorian Sentinel Practitioners Influenza Network (VicSPIN)\*

No. 09, 2020 - 20th April — 3rd May 2020

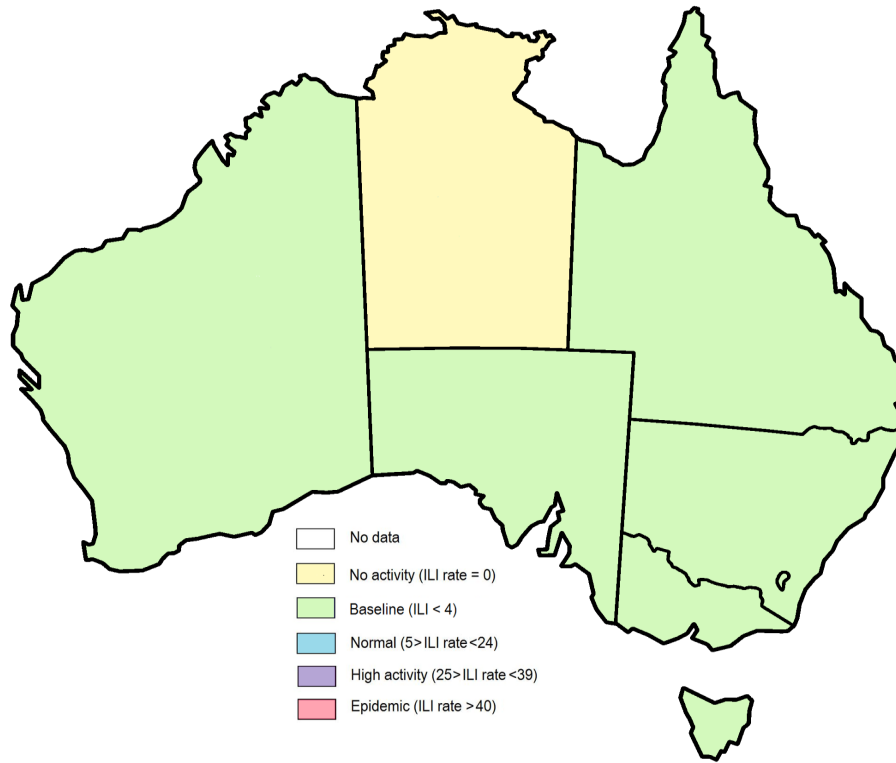


Figure 1. Map of ILI activity by jurisdiction, weeks 17 - 18, 2020.

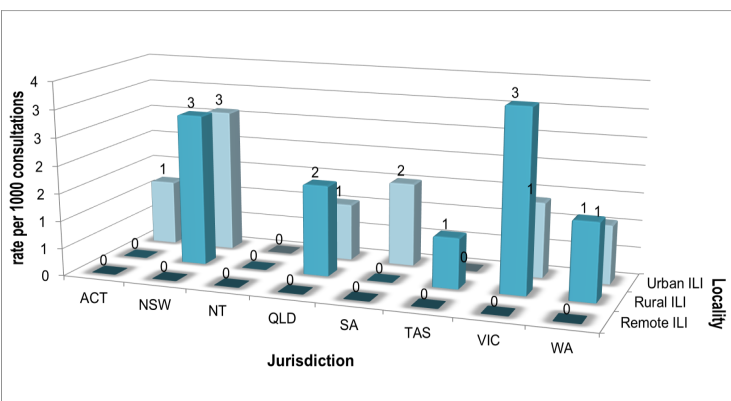


Figure 2. ASPREN + VicSPIN rate of ILI by locality and jurisdiction, weeks 17 - 18, 2020.

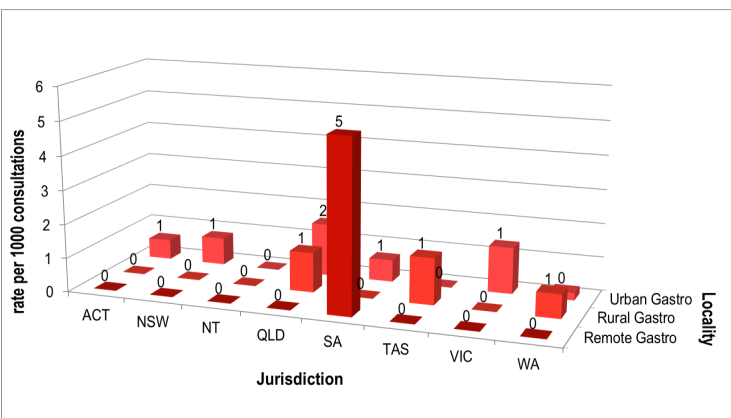



Figure 3. ASPREN rate of gastroenteritis by locality and jurisdiction, weeks 17 - 18, 2020.


**NATIONAL SUMMARY**

 Influenza-like-illness levels remain steady below baseline levels

**0** Case of influenza have been detected in this reporting period  
0 x Influenza A  
0 x Influenza B

**0%** Influenza positivity during the reporting period.

**21** Cases of influenza have been detected this year:  
19 x Influenza A  
2 x Influenza B

 Gastroenteritis levels remain steady below baseline levels

**SYNDROMIC SURVEILLANCE  
REPORTING**

Reports were received from 244 reporters from 8 states and territories during the reporting period. During weeks 17 and 18 reporters saw a total of 43,531 patients.

**INFLUENZA-LIKE-ILLNESS (ILI)**

Nationally, ILI notifications significantly decreased during the period with 75 notifications being reported in weeks 17–18. ILI rates reported in this period decreased to 2 cases per 1000 consultations (weighted). This was similar to the previous fortnight where rates were 2 cases per 1000 consultations in weeks 15 and 16 respectively. For the same reporting period in 2019, ILI rates were higher at 7 cases per 1000 consultations for weeks 17 and 18 (see Fig. 5).

**GASTROENTERITIS**

Nationally, gastroenteritis notifications significantly decreased over the period with 24 notifications reported. Gastroenteritis rates reported in this period decreased to 1 cases per 1000 consultations in both weeks 17 and 18, compared to 1 cases per 1000 consultations in weeks 15 and 16 respectively (see Fig. 5).

\* ASPREN is funded by the Commonwealth's Department of Health, Office of Health Protection, Vaccine Preventable Disease Surveillance Section.

\* VicSPIN is funded by Melbourne Health and the Victorian Infectious Diseases Reference Laboratory.

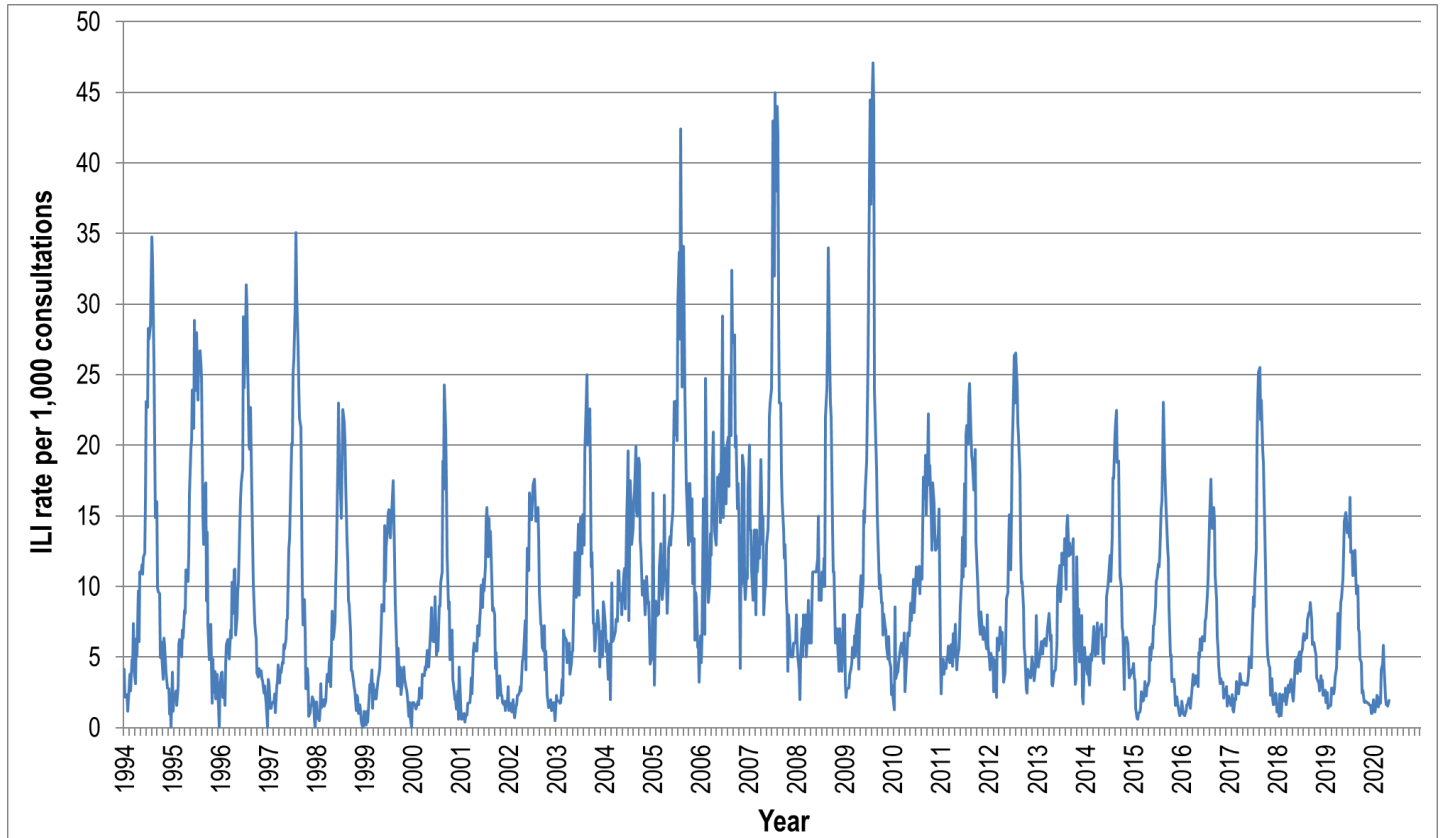


Figure 4. ASPREN ILI rates 1994 - 2020.

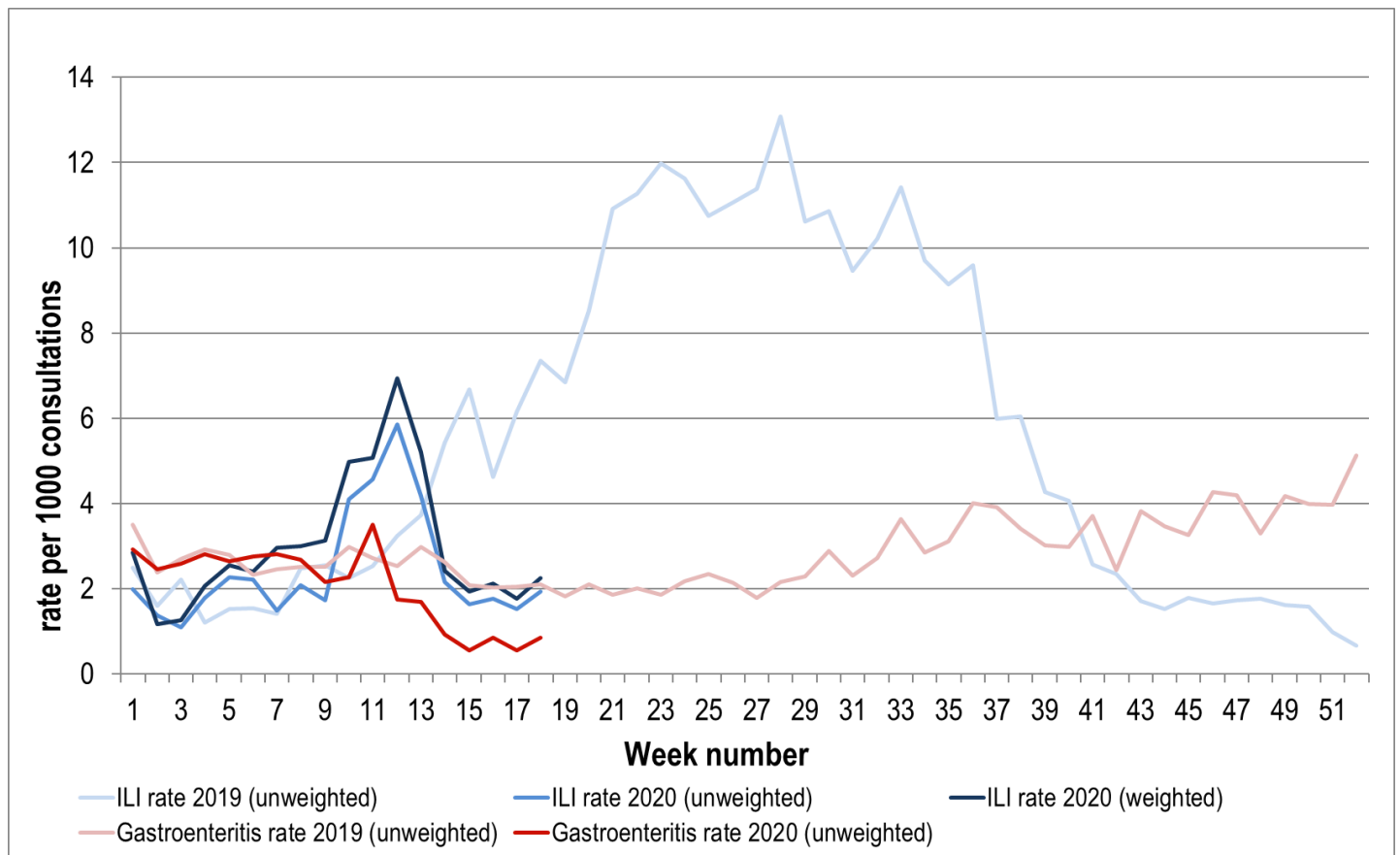


Figure 5. ASPREN + VicSPIN ILI and ASPREN gastroenteritis rates 2019-20. Weighted rates are weighted to account for population size differences between jurisdictions, using population estimates from the 2011 Australian Census.

### VIROLOGICAL SURVEILLANCE

43% of all ILI patients were swab tested during weeks 17 and 18 (see Figure 6).

No cases of Influenza were detected during this period. There were no cases of other viruses detected by ASPREN circulating the nation at present (see figure 8).

# Viral laboratory data are provided by SA Pathology and VicSPIN laboratories.

	Reporting Period 20 April - 3 May 2020	YTD 1 Jan - 3 May 2020
Total number of ILI notifications	75	853
Number of swab tests performed	32	376
% ILI patients tested	43%	44%
% of swab tests positive for influenza	0%	6%

Figure 6. ASPREN + VicSPIN virological surveillance results overview for 2020 #

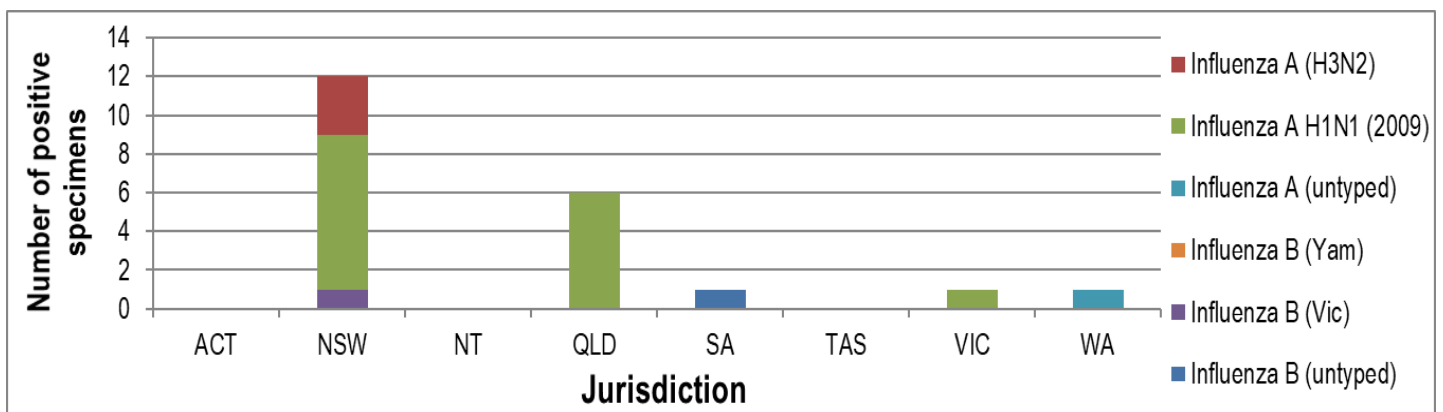


Figure 7. ASPREN + VicSPIN influenza subtype analysis by jurisdiction for 2020 #

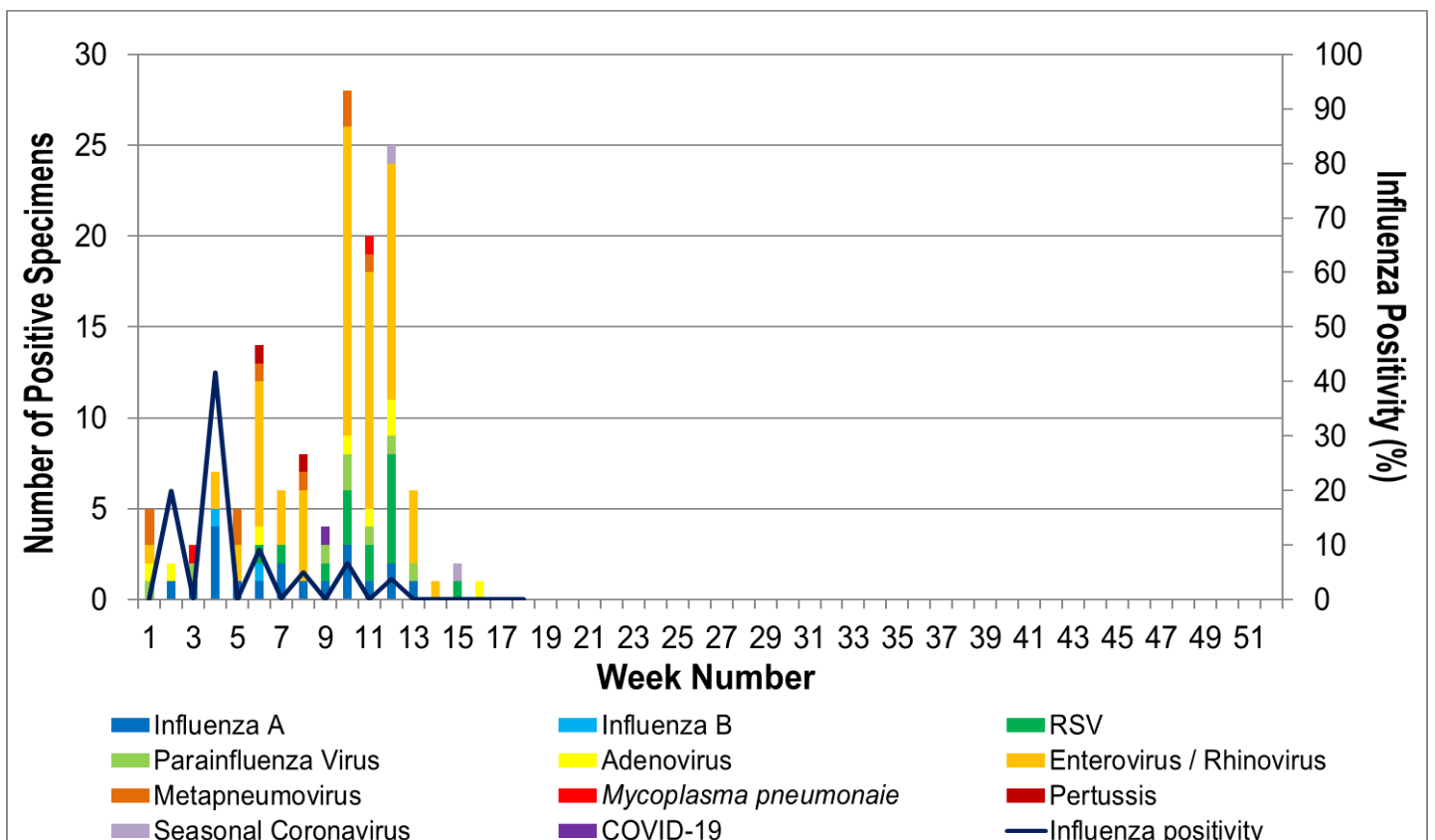


Figure 8. ASPREN, VicSPIN laboratory detection of influenza and other respiratory viruses for 2020 #