



**NATIONAL PRIMARY CARE INFECTIOUS DISEASES
SENTINEL SURVEILLANCE FORTNIGHTLY REPORT**

Combining data from The Australian Sentinel Practices Research Network (ASPREN)*
and the Victorian Sentinel Practitioners Influenza Network (VicSPIN)*

No. 04, 2020 - 10th February — 23rd February 2020

NATIONAL SUMMARY

-  Influenza-like-illness levels remain steady below baseline levels
- 3** Case of influenza have been detected in this reporting period
3 x Influenza A
0 x Influenza B
- 9%** Influenza positivity during the reporting period.
- 13** Cases of influenza have been detected this year:
11 x Influenza A
2 x Influenza B
-  Gastroenteritis levels remain steady at baseline levels

**SYNDROMIC SURVEILLANCE
REPORTING**

Reports were received from 235 reporters from 8 states and territories during the reporting period. During weeks 07 and 08 reporters saw a total of 38,230 patients.

INFLUENZA-LIKE-ILLNESS (ILI)

Nationally, ILI notifications decreased during the period with 68 notifications being reported in weeks 07—08. ILI rates reported in this period remained steady at 3 cases per 1000 consultations (weighted). This was similar to the previous fortnight where rates were 3 and 2 case per 1000 consultations in weeks 05 and 06 respectively. For the same reporting period in 2019, ILI rates were similar at 2 and 4 cases per 1000 consultations for weeks 07 and 08 respectively (see Fig. 5).

GASTROENTERITIS

Nationally, gastroenteritis notifications remained steady over the period with 105 notifications reported. Gastroenteritis rates reported in this period remained steady at 3 cases per 1000 consultations in both weeks 07 and 08, compared to 3 cases per 1000 consultations in weeks 05 and 06 respectively (see Fig. 5).

* ASPREN is funded by the Commonwealth's Department of Health, Office of Health Protection, Vaccine Preventable Disease Surveillance Section.

* VicSPIN is funded by Melbourne Health and the Victorian Infectious Diseases Reference Laboratory.

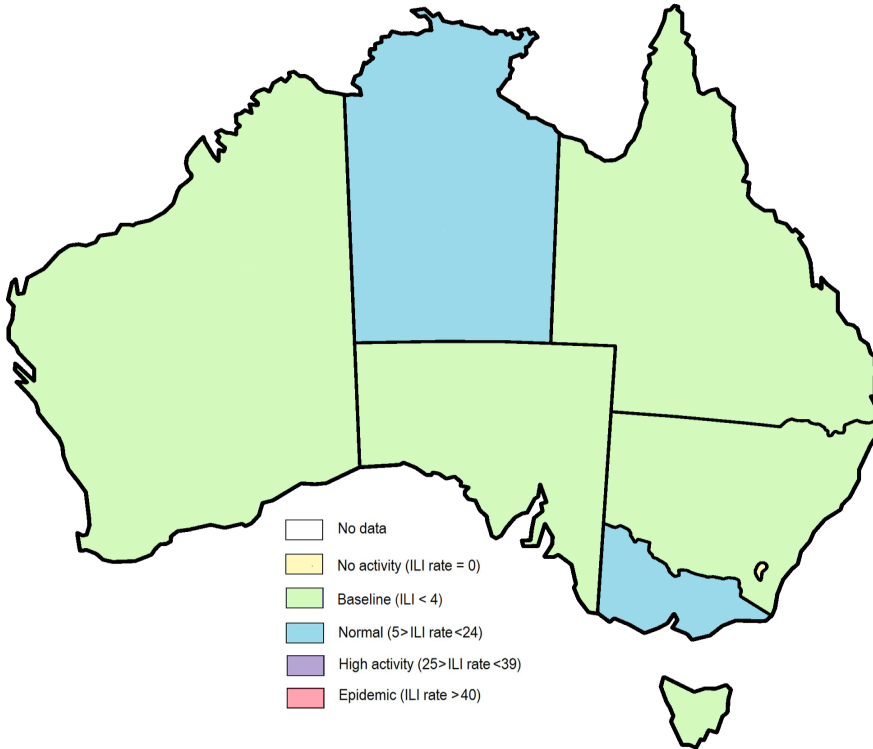


Figure 1. Map of ILI activity by jurisdiction, weeks 07 - 08, 2020.

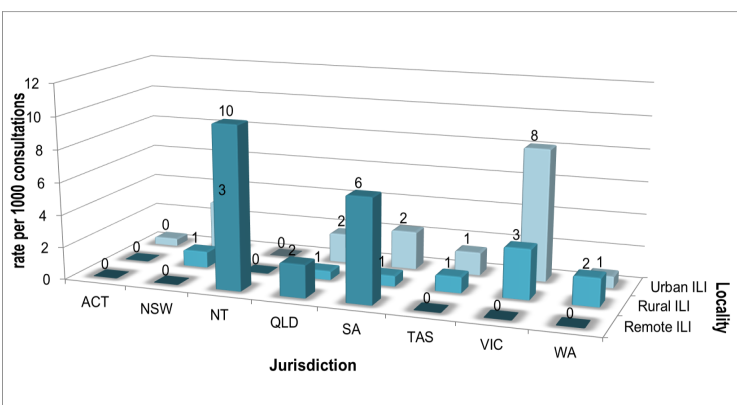


Figure 2. ASPREN + VicSPIN rate of ILI by locality and jurisdiction, weeks 07 - 08, 2020.

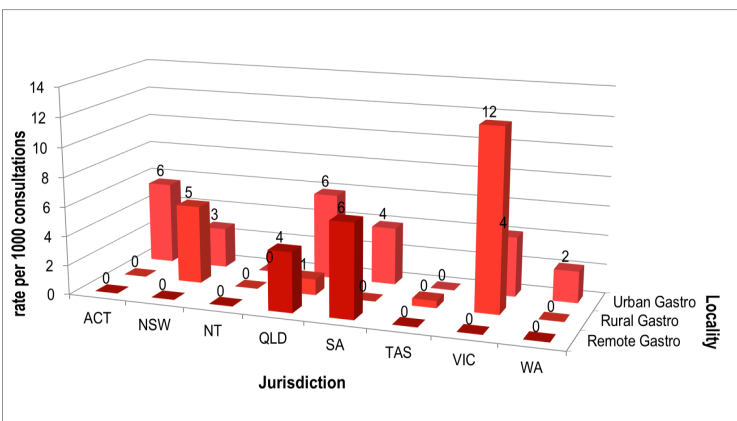


Figure 3. ASPREN rate of gastroenteritis by locality and jurisdiction, weeks 07 - 08, 2020.

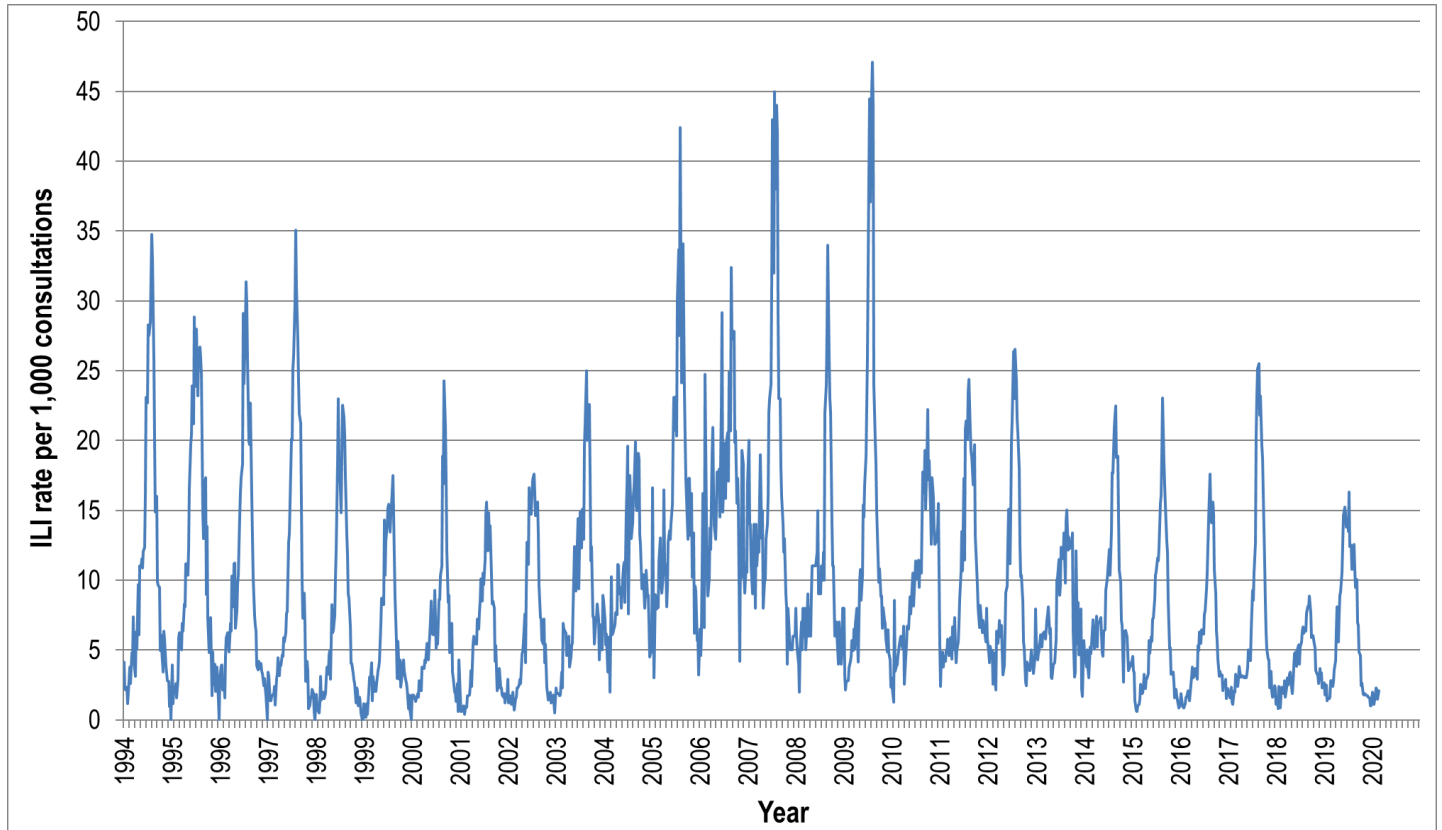


Figure 4. ASPREN ILI rates 1994 - 2020.

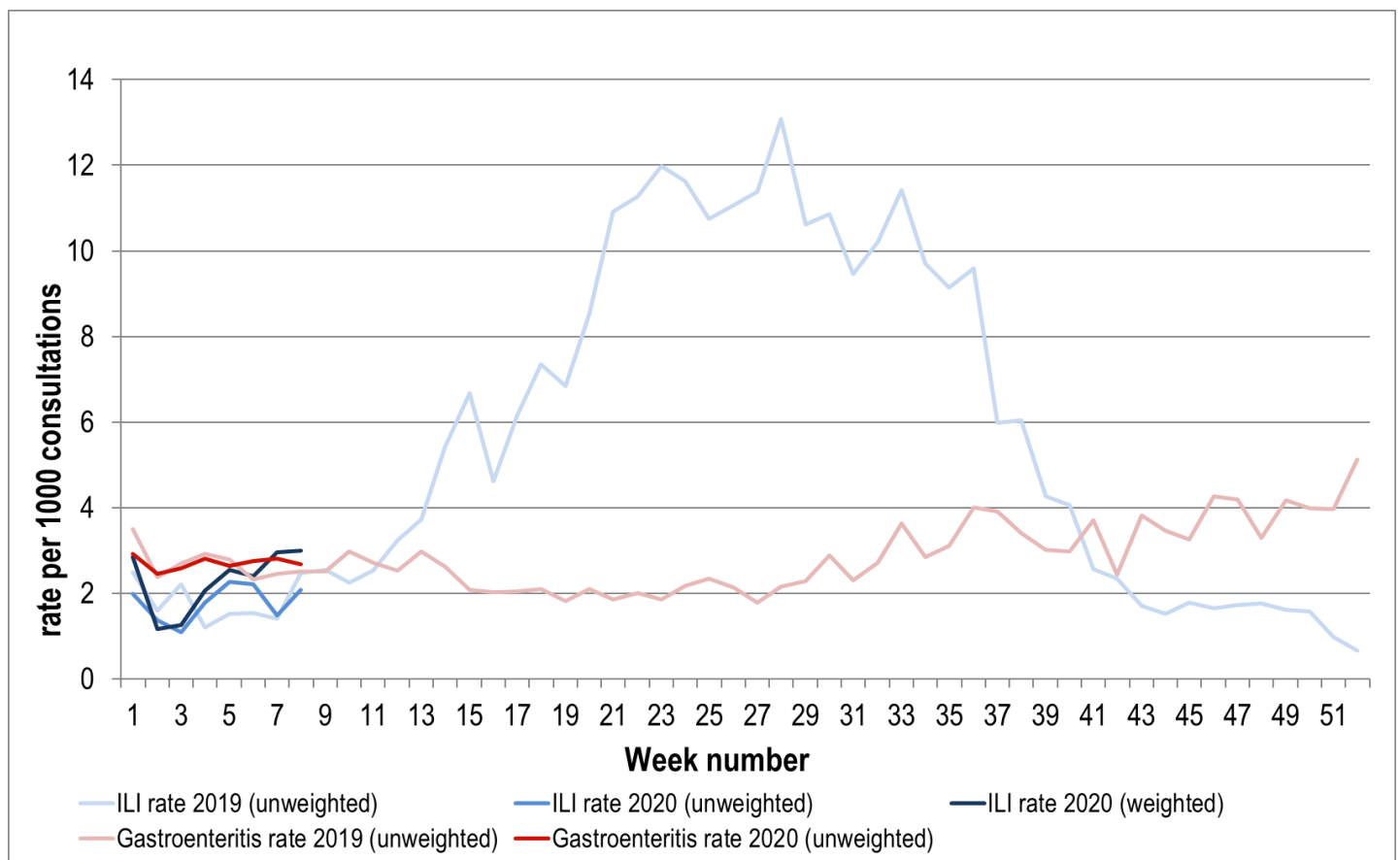


Figure 5. ASPREN + VicSPIN ILI and ASPREN gastroenteritis rates 2019-20. Weighted rates are weighted to account for population size differences between jurisdictions, using population estimates from the 2011 Australian Census.

VIROLOGICAL SURVEILLANCE

49% of all ILI patients were swab tested during weeks 07 and 08 (see Figure 6).

3 cases of Influenza were detected during this period. There were also 8 cases of Rhinovirus detected making it the most common respiratory virus circulating the nation at present (see figure 8).

Viral laboratory data are provided by SA Pathology and VicSPIN laboratories.

	Reporting Period	YTD
	10 Feb - 23 Feb 2020	1 Jan - 23 Feb 2020
Total number of ILI notifications	68	244
Number of swab tests performed	33	95
% ILI patients tested	49%	39%
% of swab tests positive for influenza	9%	14%

Figure 6. ASPREN + VicSPIN virological surveillance results overview for 2020 #

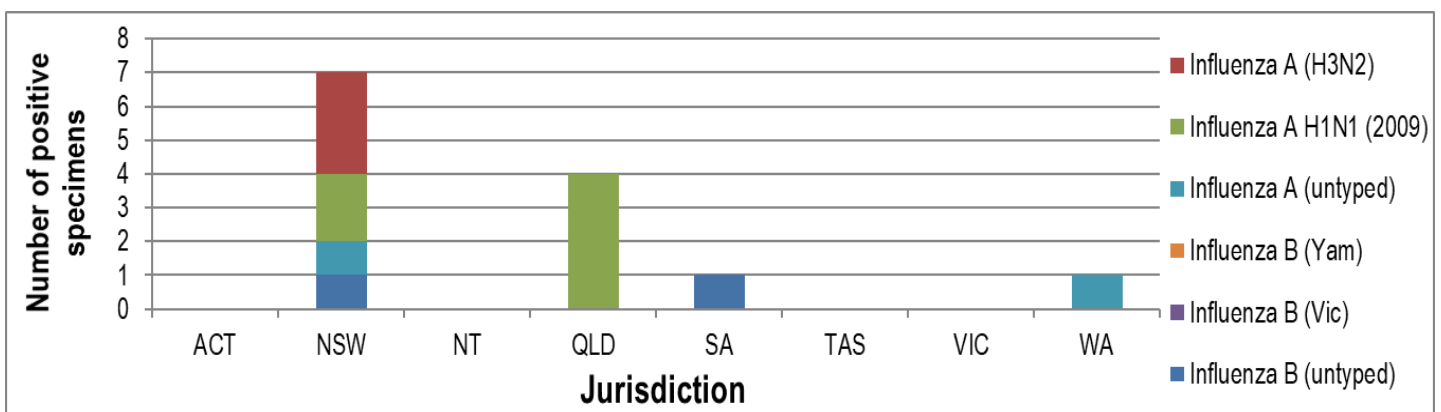


Figure 7. ASPREN + VicSPIN influenza subtype analysis by jurisdiction for 2020 #

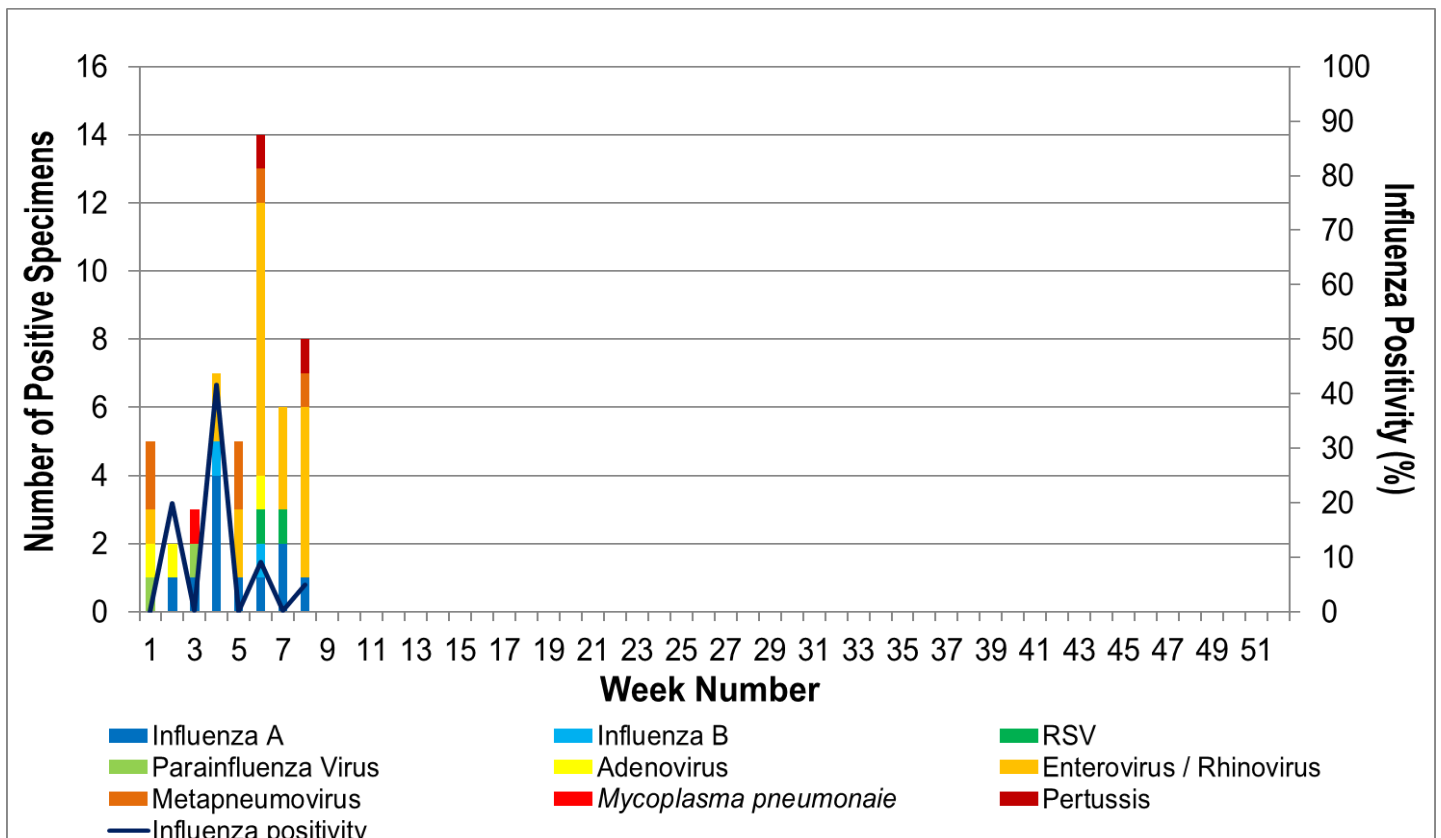


Figure 8. ASPREN, VicSPIN laboratory detection of influenza and other respiratory viruses for 2020 #

The Australian Sentinel Practices Research Network is supported by the Australian Government Department of Health (the Department). The opinions expressed in this paper are those of the authors, and do not necessarily represent the views of the Department.

Please note: This report is based on data available as at 10 March 2020. Delays in the reporting of data may cause data to change retrospectively.