

**NATIONAL PRIMARY CARE INFECTIOUS DISEASES  
SENTINEL SURVEILLANCE FORTNIGHTLY REPORT**

Combining data from The Australian Sentinel Practices Research Network (ASPREN)\*  
and the Victorian Sentinel Practitioners Influenza Network (VicSPIN)\*

No. 03, 2020 - 27th January — 9th February 2020



Figure 1. Map of ILI activity by jurisdiction, weeks 05 - 06, 2020.

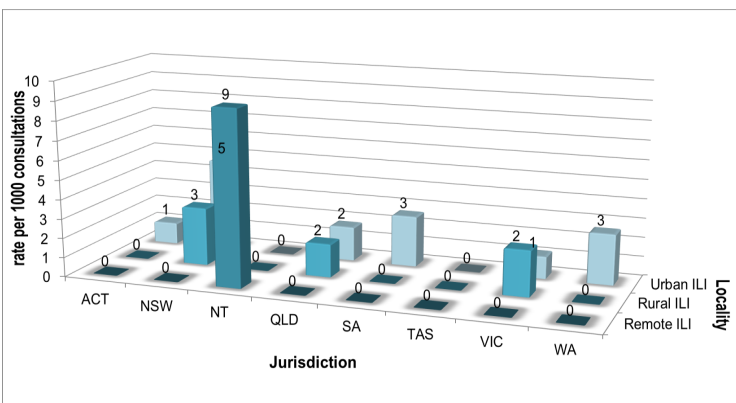


Figure 2. ASPREN + VicSPIN rate of ILI by locality and jurisdiction, weeks 05 - 06, 2020.

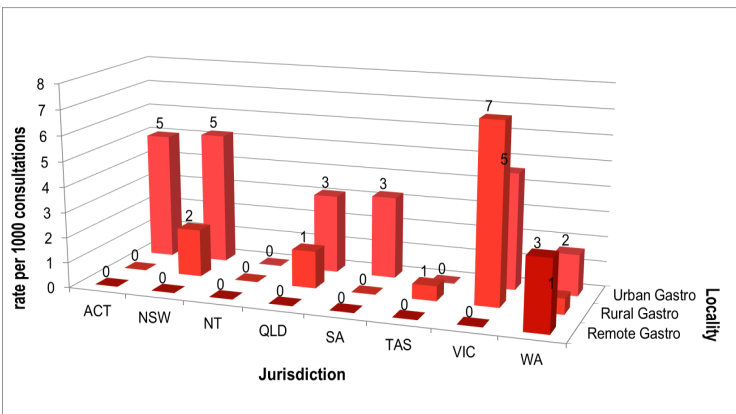


Figure 3. ASPREN rate of gastroenteritis by locality and jurisdiction, weeks 05 - 06, 2020.

**NATIONAL SUMMARY**

**6** Influenza-like-illness levels remain steady below baseline levels

**6** Case of influenza have been detected in this reporting period  
5 x Influenza A  
1 x Influenza B

**33%** Influenza positivity during the reporting period.

**7** Cases of influenza have been detected this year:  
6 x Influenza A  
1 x Influenza B

**7** Gastroenteritis levels remain steady at baseline levels

**SYNDROMIC SURVEILLANCE  
REPORTING**

Reports were received from 248 reporters from 8 states and territories during the reporting period. During weeks 05 and 06 reporters saw a total of 36,233 patients.

**INFLUENZA-LIKE-ILLNESS (ILI)**

Nationally, ILI notifications increased during the period with 81 notifications being reported in weeks 05—06. ILI rates reported in this period remained steady at 3 and 2 cases per 1000 consultations (weighted) respectively. This was less than the previous fortnight where rates were 1 and 2 case per 1000 consultations in weeks 03 and 04 respectively. For the same reporting period in 2019, ILI rates were similar at 3 and 1 cases per 1000 consultations for weeks 05 and 06 respectively(see Fig. 5).

**GASTROENTERITIS**

Nationally, gastroenteritis notifications remained steady over the period with 98 notifications reported. Gastroenteritis rates reported in this period remained steady at 3 cases per 1000 consultations in both weeks 05 and 06, compared to 3 cases per 1000 consultations in weeks 03 and 04 respectively (see Fig. 5).

\* ASPREN is funded by the Commonwealth's Department of Health, Office of Health Protection, Vaccine Preventable Disease Surveillance Section.

\* VicSPIN is funded by Melbourne Health and the Victorian Infectious Diseases Reference Laboratory.

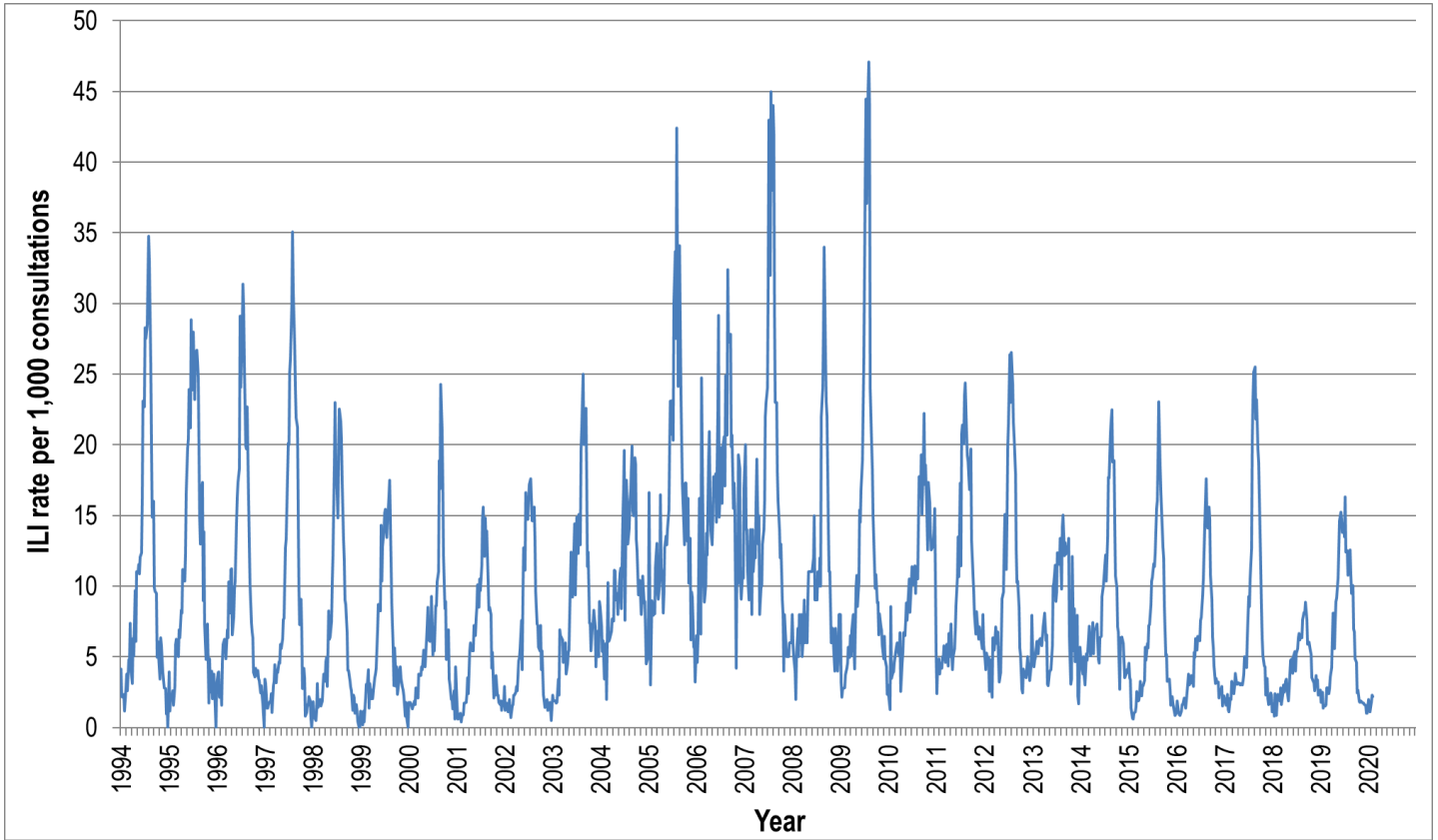


Figure 4. ASPREN ILI rates 1994 - 2020.

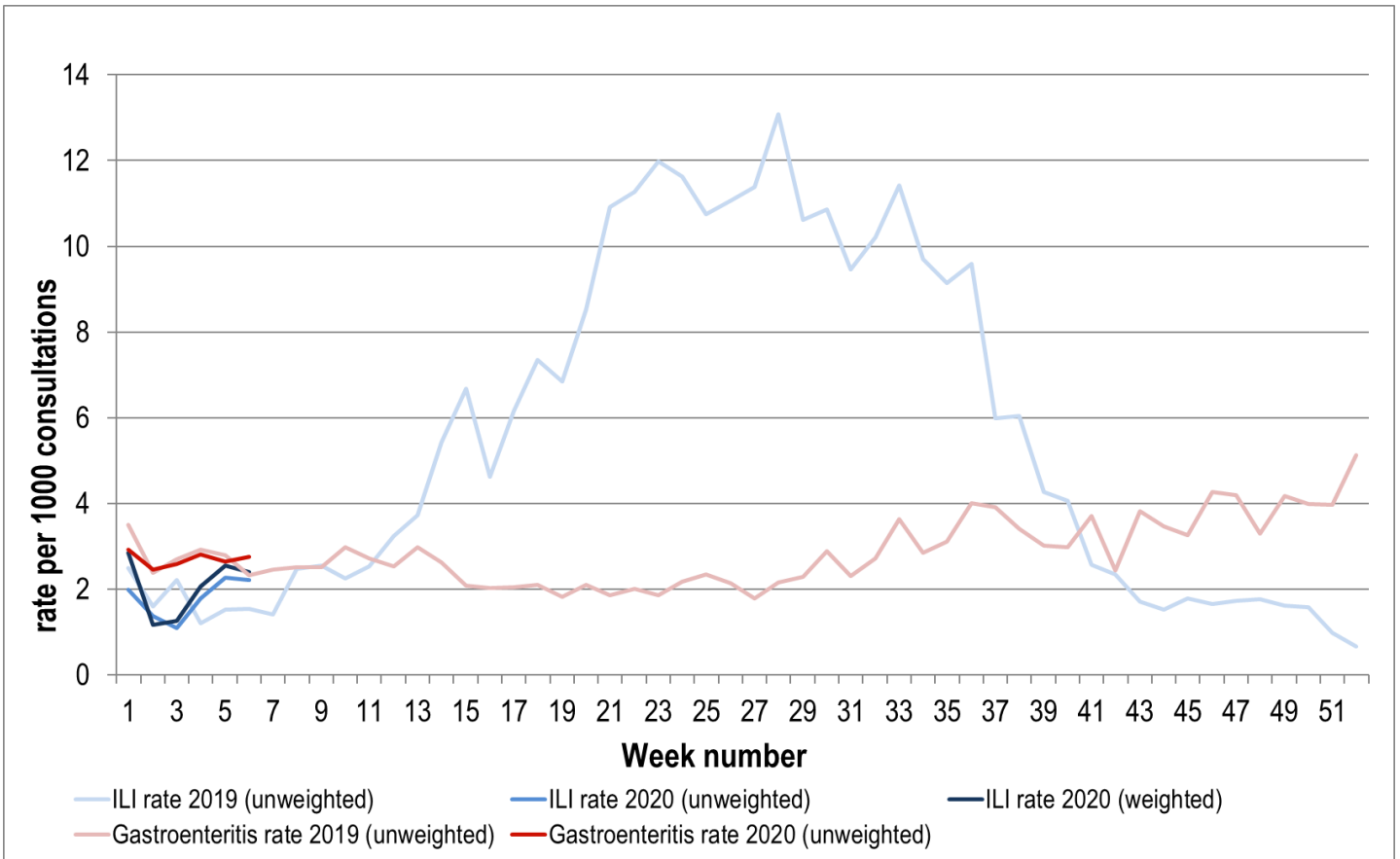


Figure 5. ASPREN + VicSPIN ILI and ASPREN gastroenteritis rates 2019-20. Weighted rates are weighted to account for population size differences between jurisdictions, using population estimates from the 2011 Australian Census.

### VIROLOGICAL SURVEILLANCE

43% of all ILI patients were swab tested during weeks 05 and 06 (see Figure 6).

3 cases of Influenza were detected during this period. There were also 10 cases of Rhinovirus detected making it the most common respiratory virus circulating the nation at present (see figure 8).

# Viral laboratory data are provided by SA Pathology and VicSPIN laboratories.

	Reporting Period 27 Jan - 9 Feb 2020	YTD 1 Jan - 9 Feb 2020
Total number of ILI notifications	81	176
Number of swab tests performed	35	62
% ILI patients tested	43%	35%
% of swab tests positive for influenza	9%	16%

Figure 6. ASPREN + VicSPIN virological surveillance results overview for 2020 #

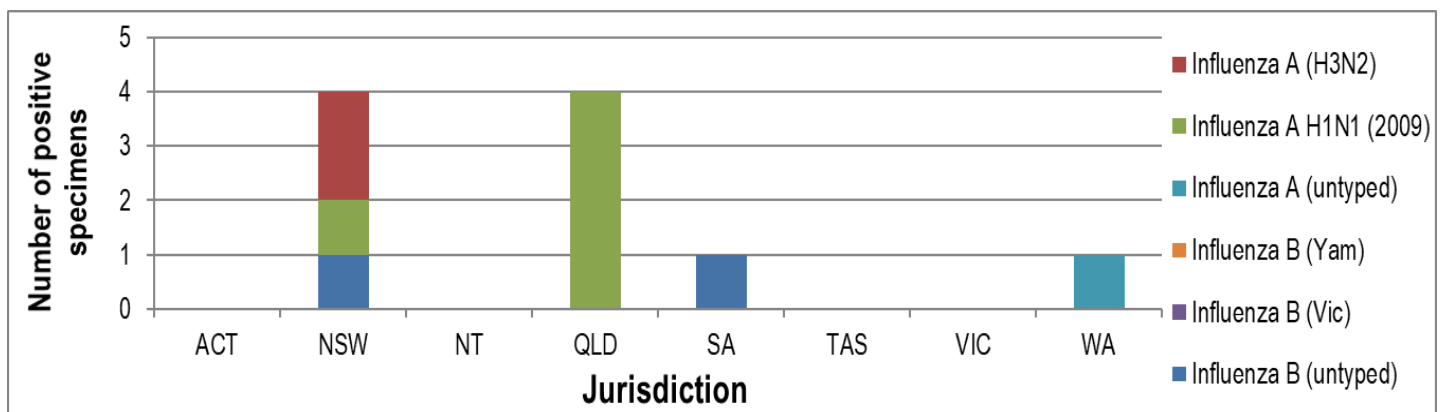


Figure 7. ASPREN + VicSPIN influenza subtype analysis by jurisdiction for 2020 #

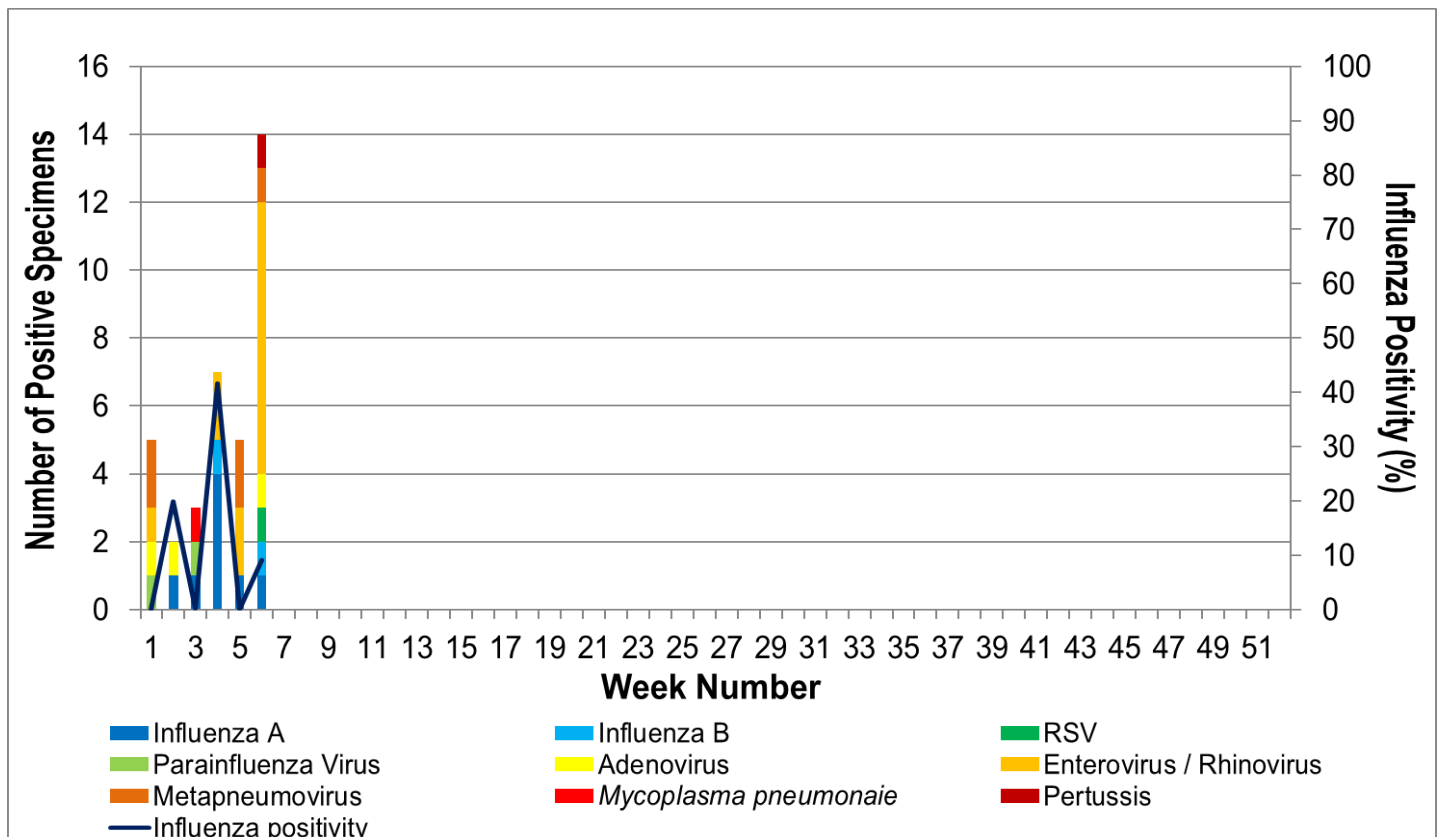


Figure 8. ASPREN, VicSPIN laboratory detection of influenza and other respiratory viruses for 2020 #

The Australian Sentinel Practices Research Network is supported by the Australian Government Department of Health (the Department). The opinions expressed in this paper are those of the authors, and do not necessarily represent the views of the Department.

Please note: This report is based on data available as at 25 February 2020. Delays in the reporting of data may cause data to change retrospectively.