

**NATIONAL PRIMARY CARE INFECTIOUS DISEASES
SENTINEL SURVEILLANCE FORTNIGHTLY REPORT**

From The Australian Sentinel Practices Research Network (ASPREN) *

No. 07, 2024 - 25th March — 7th April 2024

NATIONAL SUMMARY



Influenza-like-illness levels are increasing

9

Case of influenza have been detected in this reporting period
8 x Influenza A
1 x Influenza B

12%

Influenza positivity during the reporting period.

34

Cases of influenza have been detected this year:
30 x Influenza A
4 x Influenza B



Gastroenteritis levels remain steady below baseline levels

**SYNDROMIC SURVEILLANCE
REPORTING**

Reports were received from 291 reporters from 8 states and territories during the reporting period. During weeks 13 and 14 reporters saw a total of 38,143 patients.

INFLUENZA-LIKE-ILLNESS (ILI)

Nationally, ILI notifications remained steady during the period with 172 notifications

being reported in weeks 13–14. ILI rates reported in this period were 5 and 6 cases per 1000 consultations (weighted). This was slightly higher than the previous fortnight where rates were 5 cases per 1000 consultations in weeks 11 and 12. For the same reporting period in 2023, ILI rates were lower at 3 and 2 cases per 1000 consultations for weeks 13 and 14 respectively (see Fig. 5).

GASTROENTERITIS

Nationally, gastroenteritis notifications significantly decreased to 66 notifications reported. Gastroenteritis rates reported in this period remained steady at 2 cases per 1000 consultations in weeks 13 and 14, compared to 2 cases per 1000 consultations in weeks 11 and 12 (see Fig. 5).

* ASPREN is funded by the Commonwealth's Department of Health, Office of Health Protection, Vaccine Preventable Disease Surveillance Section.

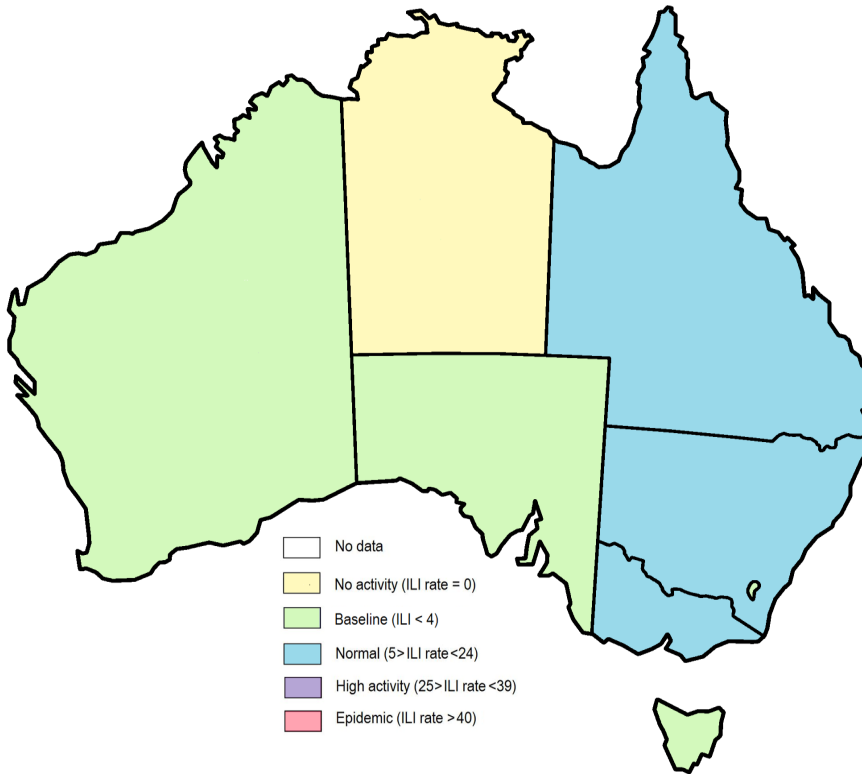


Figure 1. Map of ILI activity by jurisdiction, weeks 13 - 14, 2024.

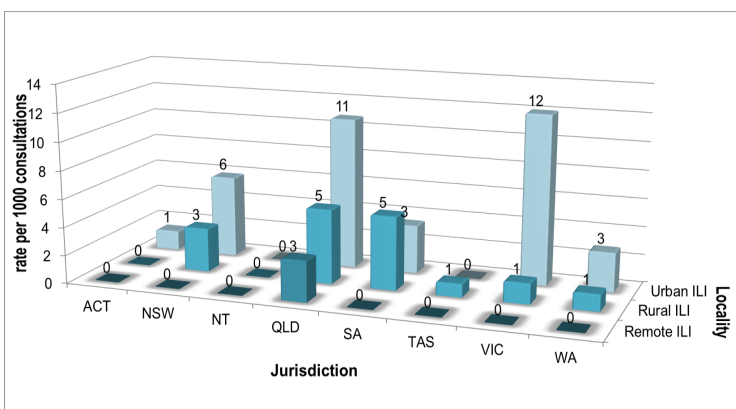


Figure 2. ASPREN rate of ILI by locality and jurisdiction, weeks 13 - 14, 2024.

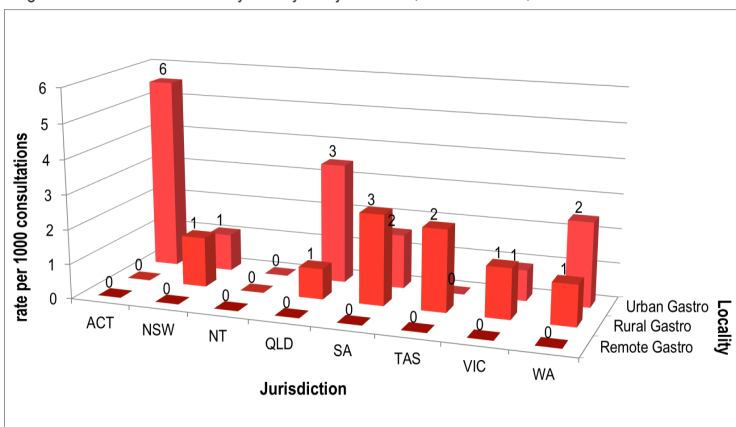


Figure 3. ASPREN rate of gastroenteritis by locality and jurisdiction, weeks 13 - 14, 2024.

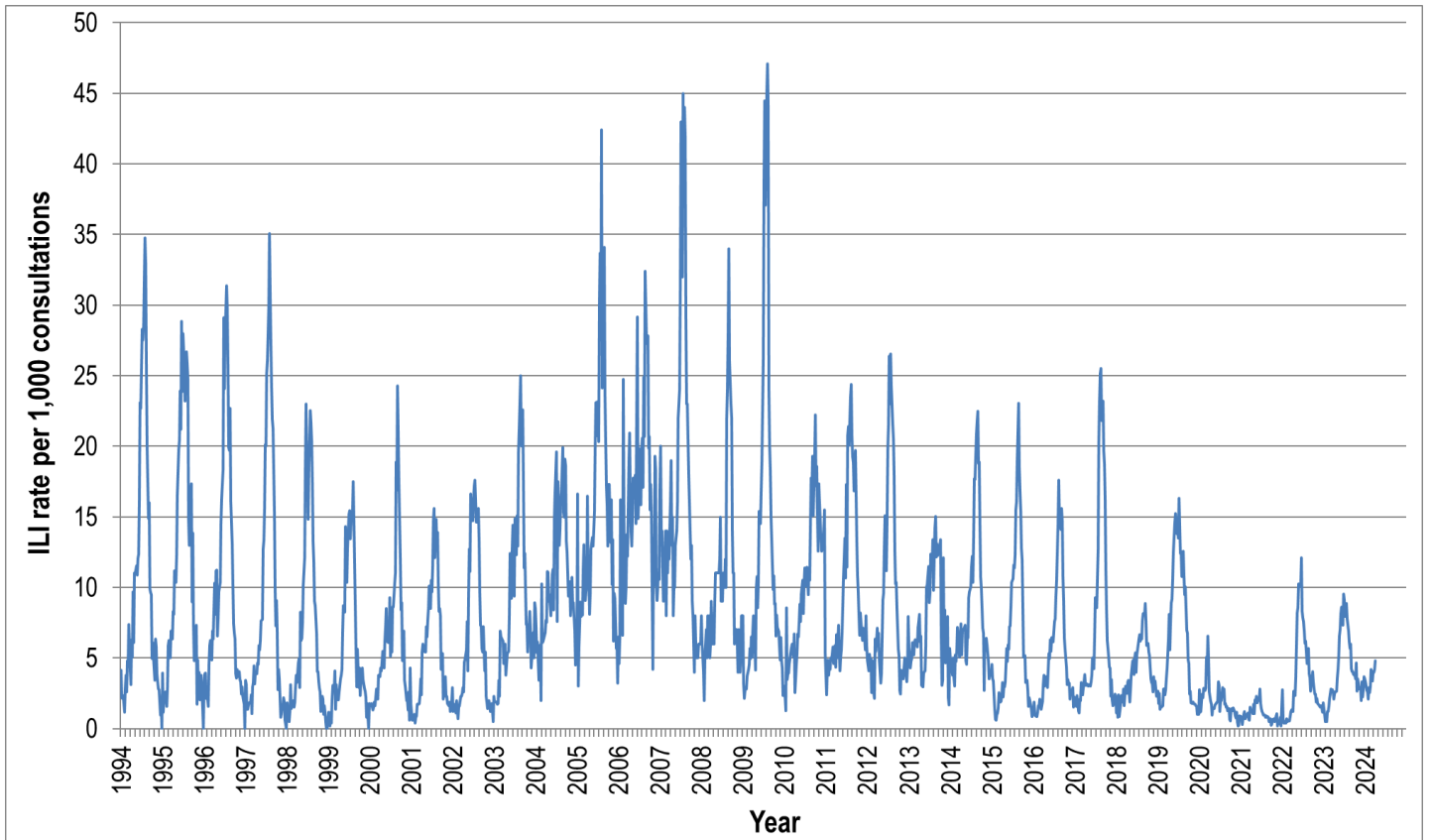


Figure 4. ASPREN ILI rates 1994 - 2024.

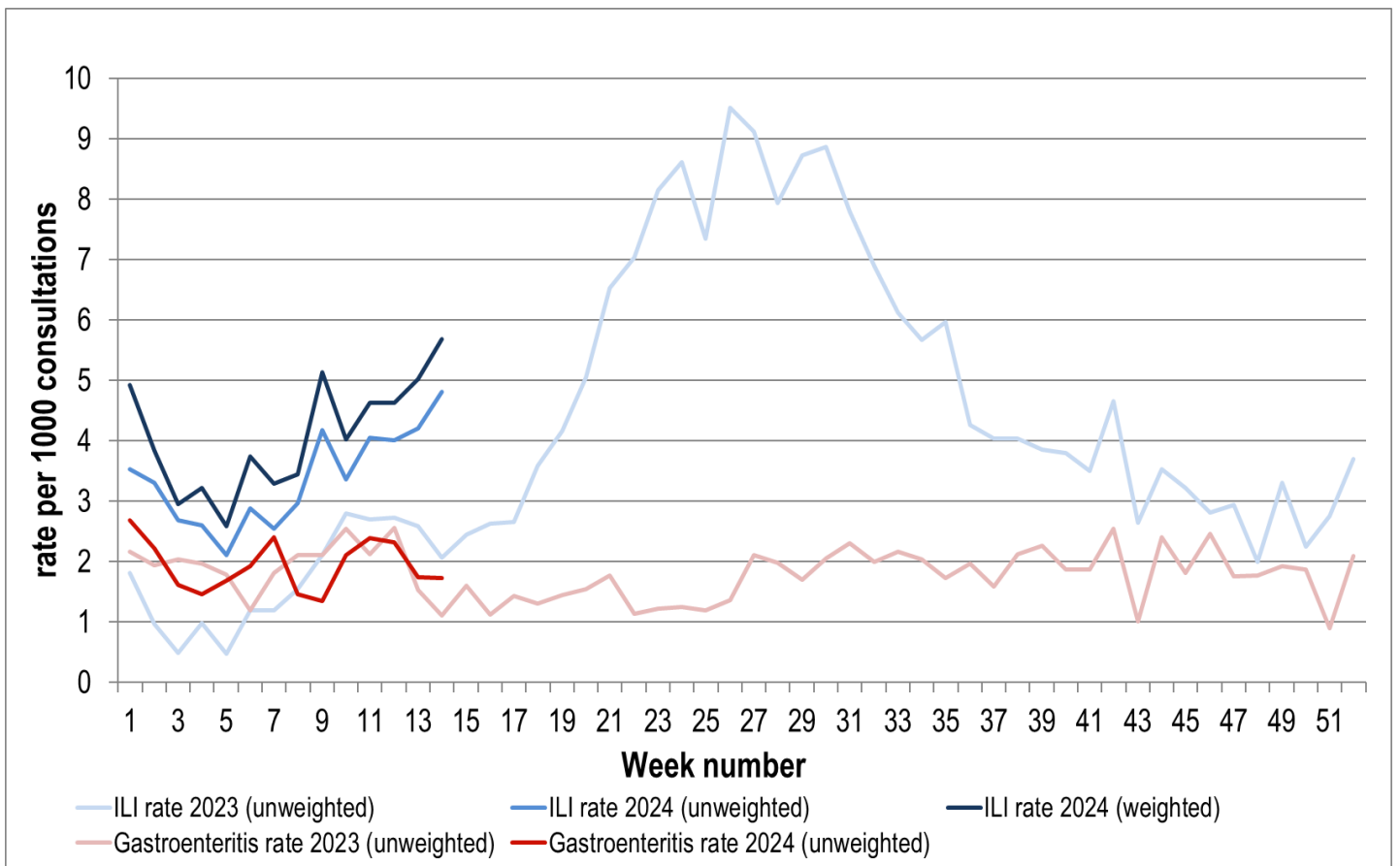


Figure 5. ASPREN ILI and gastroenteritis rates 2023-24. Weighted rates are weighted to account for population size differences between jurisdictions, using population estimates from the 2011 Australian Census.

VIROLOGICAL SURVEILLANCE

45% of all ILI patients were swab tested during weeks 13 and 14 (see Figure 6).

8 cases of Influenza A, 1 cases of Influenza B and 10 cases of SARS-CoV-2 were detected during this period. There were 21 cases of Rhinovirus detected making it the most common respiratory virus circulating the nation at present (see figure 8).

Viral laboratory data is provided by SA Pathology laboratory.

	Reporting Period 25 March - 7 April 2024	YTD 1 Jan - 7 April 2024
Total number of ILI notifications	172	921
Number of swab tests performed	78	382
% ILI patients tested	45%	41%
% of swab tests positive for influenza	12%	9%

Figure 6. ASPREN virological surveillance results overview for 2024 #

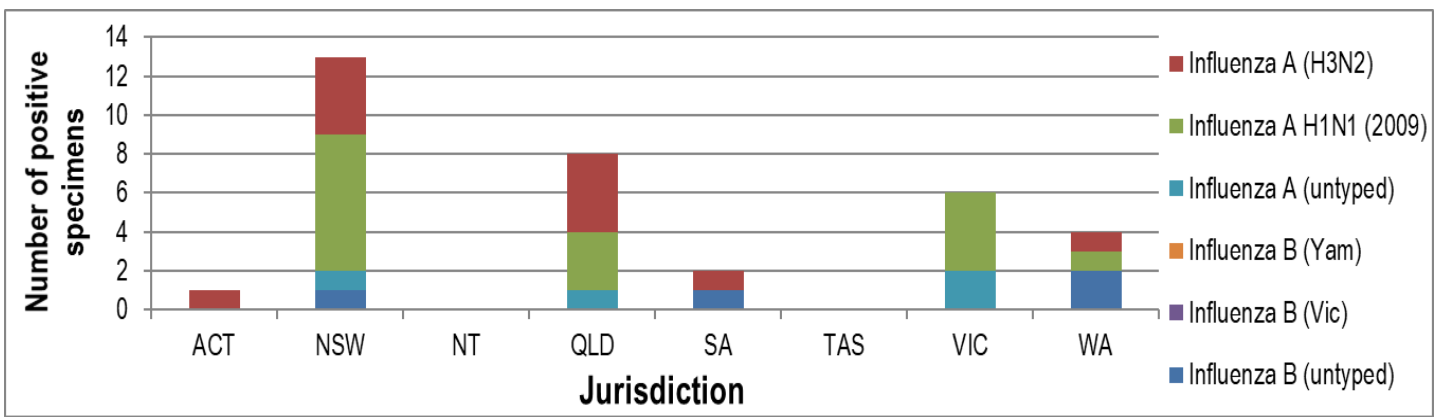


Figure 7. ASPREN influenza subtype analysis by jurisdiction for 2024 #

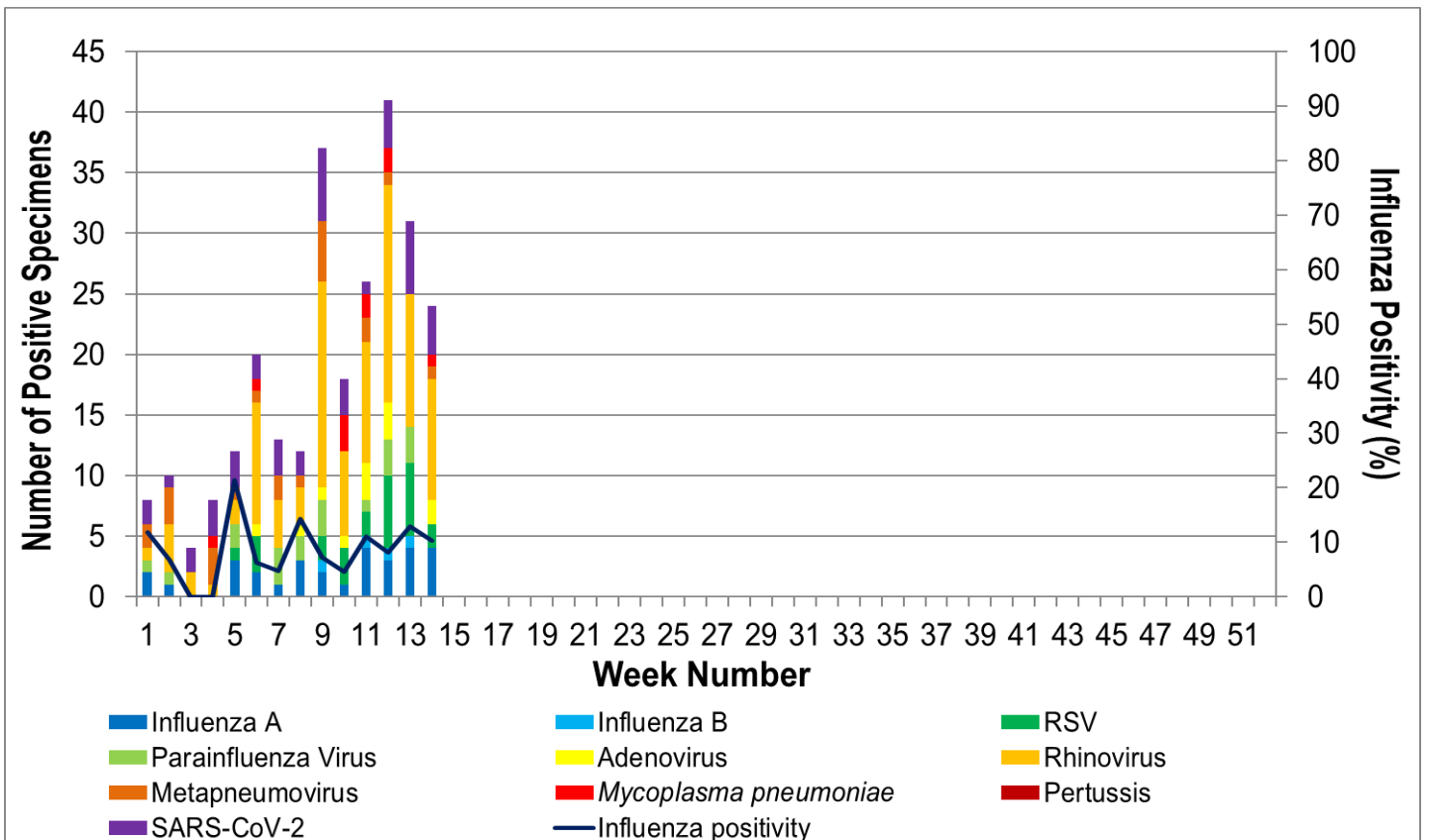


Figure 8. ASPREN, laboratory detection of influenza and other respiratory viruses for 2024 #

The Australian Sentinel Practices Research Network is supported by the Australian Government Department of Health (the Department). The opinions expressed in this paper are those of the authors, and do not necessarily represent the views of the Department.

Please note: This report is based on data available as at 11 April 2024. Delays in the reporting of data may cause data to change retrospectively.